

NIASRA

NATIONAL INSTITUTE FOR APPLIED
STATISTICS RESEARCH AUSTRALIA



***National Institute for Applied Statistics Research
Australia***

University of Wollongong, Australia

Working Paper

07-19

**Bayesian Atmospheric Tomography for Detection and
Quantification of Methane Emissions: Application to
Data from the 2015 Ginninderra Release Experiment**

Laura Cartwright, Andrew Zammit-Mangion, Sangeeta Bhatia, Ivan Schroder,
Frances Phillips, Trevor Coates, Karita Neghandhi, Travis Naylor, Martin
Kennedy, Steve Zegelin, Nick Wokker, Nicholas M. Deutscher, and Andrew Feitz

*Copyright © 2019 by the National Institute for Applied Statistics Research Australia, UOW.
Work in progress, no part of this paper may be reproduced without permission from the Institute.*

National Institute for Applied Statistics Research Australia, University of Wollongong,
Wollongong NSW 2522, Australia Phone +61 2 4221 5076, Fax +61 2 4221 4998.

Email: karink@uow.edu.au

Bayesian atmospheric tomography for detection and quantification of methane emissions: Application to data from the 2015 Ginninderra release experiment

Laura Cartwright¹, Andrew Zammit-Mangion¹, Sangeeta Bhatia^{2, 3}, Ivan Schroder⁴, Frances Phillips⁵, Trevor Coates⁶, Karita Neghandhi^{7, 8}, Travis Naylor⁵, Martin Kennedy⁷, Steve Zegelin⁹, Nick Wokker¹⁰, Nicholas M. Deutscher⁵, and Andrew Feitz⁴

¹School of Mathematics and Applied Statistics, University of Wollongong, Wollongong, Australia

²Centre for Research in Mathematics, Western Sydney University, Parramatta, Australia

³School of Public Health, Imperial College London, London, UK (current address)

⁴Geoscience Australia, Canberra, Australia

⁵Centre for Atmospheric Chemistry, School of Earth, Atmosphere and Life Sciences, University of Wollongong, Wollongong, Australia

⁶School of Agriculture and Food, University of Melbourne, Melbourne, Australia

⁷Department of Earth and Planetary Sciences, Macquarie University, Sydney, Australia

⁸Office of Environment and Heritage, Parramatta, Australia (current address)

⁹CSIRO Oceans and Atmosphere, Canberra, Australia

¹⁰Department of Industry, Innovation and Science, Canberra, Australia

Correspondence: Laura Cartwright (lcartwri@uow.edu.au)

Abstract

Detection and quantification of greenhouse-gas emissions is important for both compliance and environment conservation. However, despite several decades of active research, it remains predominantly an open problem, largely due to model errors and misspecifications that appear at each stage of the inversion processing chain. In 2015, a controlled-release experiment headed by Geoscience Australia was carried out at the Ginninderra Controlled Release Facility, and a variety of instruments and methods were employed for quantifying the release rates of methane and carbon dioxide from a point source. This paper proposes a fully Bayesian approach to atmospheric tomography for inferring the methane emission rate of this point source using data collected during the experiment from both point- and path-sampling instruments. The Bayesian framework is designed to account for uncertainty in the parametrisations of measurements, the meteorological data, and the atmospheric model itself when doing inversion using Markov chain Monte Carlo (MCMC). We apply our framework to all instrument groups using measurements from two release-rate periods. We show that the inversion framework is robust to instrument type and meteorological conditions. The worst median emission-rate estimate we obtain from all the inversions is within 36% of the true value, while the worst posterior 95% credible interval has a limit within 11% of the true value.

1 Introduction

Methane (CH_4) is an important transition fuel for decarbonisation of the global energy system (International Energy Agency, 2017). As countries increase the renewable energy mix into their existing electricity networks, CH_4 can firm up network stability and supply (International Energy Agency, 2017; Jenkins et al., 2018). Utilisation of biogas or natural gas with carbon capture and storage offers a lower cost pathway to achieve deep decarbonisation targets (Sepulveda et al., 2018). One of the disadvantages of CH_4 , however, is that its global warming potential is much greater than CO_2 , so that only a few percent of losses of CH_4 into the atmosphere can negate any climate-change mitigation advantages from reducing conventional coal-fired power production (Kinnon et al., 2018). For this reason, it is critical that losses of CH_4 along the supply chain are accurately accounted for to ensure public confidence in climate-change mitigation benefits of switching to natural gas. Unfortunately, while several types of instrumentation are available to aid the detection and estimation of fugitive emissions, harnessing acquired data for reliable emission detection and quantification remains a notoriously difficult problem.

In an effort to evaluate the performance of various instruments and algorithms for estimating the emission rate under controlled conditions, in 2015 a CH_4 and CO_2 controlled-release experiment was held at the Ginninderra Controlled Release Facility in Canberra, Australia (Feitz et al., 2018). This large multidisciplinary, multi-institutional blind-release trial (i.e., the participants did not know the true release rate) simultaneously assessed eight different CH_4 emission-rate estimation techniques, using data from both mobile and stationary instrumentation. These eight techniques included tracer ratio techniques; backwards Lagrangian stochastic modelling; forward Lagrangian stochastic modelling; Lagrangian stochastic footprint modelling; and atmospheric tomography techniques. A full description of the methods and results is given in Feitz et al. (2018).

Every group involved in the analysis presented in Feitz et al. (2018) used a unique combination of instrumentation and estimation technique when carrying out the analysis, making it hard to establish the respective merits (or otherwise) of the employed techniques from the inversion results. Nonetheless, an interesting observation from the study is that none of the eight techniques deployed during the blind release trial had a leakage uncertainty range (95% interval) that included the true emission rate, while some estimates (including one obtained using atmospheric tomography) were factors of 2 or more off from the true value. Given that atmospheric methane concentration and meteorological instrument measurement uncertainty is generally low for each of the different approaches, it suggests that the techniques that were used did not adequately account for the variability of atmospheric measurements or the uncertainty introduced through parametrisation of atmospheric mixing conditions (e.g., Monin-Obukhov lengths and/or Pasquill stability classes) and atmospheric dispersion/transport model uncertainty.

A number of studies have highlighted the importance of atmospheric-model error in estimating emission rates or fluxes (e.g., Basu et al., 2018; Chevallier et al., 2010). For example, Peylin et al. (2002) showed that flux estimates are sensitive to the chosen spatio-temporal resolution of the fluxes and the chosen transport model. Uncertainty in the meteorological fields driving the transport model is also known to play a big role (e.g., Miller et al., 2015). While ensemble inversions are frequently used to highlight the sensitivity of the results to atmospheric models and meteorological fields, learning unknown parameters associated with transport *concurrently* with the emission rate is not often done, largely due to the computational implications of such an approach. Key here are the use of surrogate models (or emulators) to obtain simplified transport representations. For example, Lucas et al. (2017) use decision/regression trees as a surrogate for FLEXPART-WRF, which allows for quick simulation at various parameter set-

tings that can in turn be used to make inference. For the Ginninderra data we employ the more traditional Gaussian plume model, which can be seen as a surrogate for a full-blown transport model. While known to work well in the small domain (an area of approximately 100×100 m) setting we consider (e.g., [Riddick et al. \(2017\)](#)), importantly this plume model is quick to simulate from, giving us the opportunity to calibrate it while estimating the emission release rate (e.g., [Borysiewicz et al. \(2012\)](#)). We see that “online plume-model calibration” is not only feasible, but crucial for obtaining accurate emission-rate estimates with our data.

Transport model calibration fits squarely in the classic inverse theory framework of [Tarantola \(2005\)](#), which is seated within a Bayesian paradigm, and which underpins several of the inversion systems in place today; see, for example, [Ganesan et al. \(2014\)](#); [Hirst et al. \(2013\)](#); [Houwelling et al. \(2017\)](#); [Humphries et al. \(2012\)](#); [Luhar et al. \(2014\)](#); [White et al. \(2018\)](#). Inference in such cases is often done using sampling techniques such as Markov chain Monte Carlo (MCMC) or importance sampling ([Rajaona et al. \(2015\)](#)). Quick evaluation of the transport/dispersion model (or surrogate) is crucial when repeatedly evaluating it within an MCMC framework; the Gaussian plume model is hence a popular choice in these frameworks (e.g., [Jones et al. \(2016\)](#); [Wang et al. \(2017\)](#)). MCMC is also our method of choice for Bayesian atmospheric tomography, because it allows relatively easy computation of posterior distributions of parameters that are deeply nested within a hierarchical model. It is also ideally suited for the case of point-source emissions, where the dimensionality of the latent space is low (unlike, for example, when doing regional emission quantification).

The primary contribution of this article is an extension of the typical Bayesian atmospheric tomography technique designed for detection and estimation of emissions from point sources. The technique accounts for uncertainty in our data, in our process models, and in our parameters, and takes into account instrument-specific bias. Inference is made on all unknown parameters using MCMC; a by-product of the model we employ is the ability to calibrate parameters that appear in the transport model, and to propagate uncertainty in the model to our posterior inferences on the release rate. We demonstrate the efficacy and utility of the unifying Bayesian framework on data from point- and path-referenced instruments used in the Ginninderra experiment. A secondary contribution is the curated provision of a data set containing a large portion of the Ginninderra data at a five-minute resolution, which we hope will serve as a resource for other researchers to validate their own emission-rate estimation techniques on. The data and scripts required to reproduce the results in this article are available from <https://github.com/Lcartwright94/BayesianAT>.

The remainder of the article is organised as follows. Section [2](#) gives an overview of the experimental setup and the data collected during the 2015 Ginninderra experiment. Section [3](#) describes the atmospheric transport model used, while Sect. [4](#) details the hierarchical model we employ and the Bayesian methodology we develop for emission-rate estimation. Section [5](#) gives the results from application of our Bayesian atmospheric tomography technique on the Ginninderra data. Section [6](#) examines how our results would change if certain components in our model (e.g., relating to the plume model) are (erroneously) assumed fixed and known. Section [7](#) concludes.

2 The 2015 Ginninderra release experiment

A full description of the experimental setup, measurement techniques and quantification methods used in the 2015 Ginninderra release experiment are given in [Feitz et al. \(2018\)](#). Briefly, CH_4 (together with CO_2 and N_2O), was released from a small chamber located in a fallow agricultural field from 23 April to 12 June, and 23 to 24 June 2015. A variety of CH_4 sensors were placed around the release chamber. The measurement data considered in this study were obtained from two Picarro G2201-i analysers (positioned in the predominant upwind (NW)

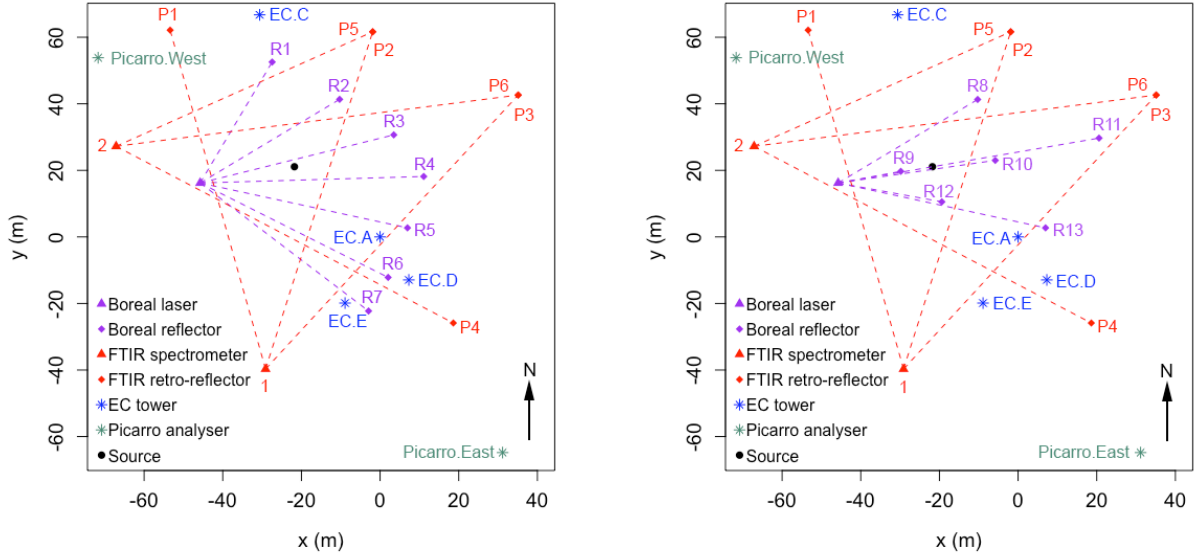


Figure 1: Left: Layout of instruments in the 2015 Ginninderra release experiment between 21 May and 7 June 2015. Right: Layout of instruments between 8 and 12 June 2015. R1 to R13 are the paths formed between the Boreal laser and reflectors; P1 to P6 are the paths formed between the FTIR spectrometers and retro-reflectors; EC.A to EC.E are the EC towers; and Picarro.East and Picarro.West are the Picarro analysers. All coordinates are relative to EC.A, which is situated at the origin.

and downwind (SE) location of the release chamber, labelled Picarro.West and Picarro.East), four eddy covariance (EC) towers equipped with Li-COR 7700 open path CH_4 sensors (labelled EC.A, EC.C, EC.D, and EC.E), two scanning FTIR analysers with four retro-reflectors terminating six measurement paths (labelled P1 to P6), and a scanning GasFinder 2 Boreal laser with seven reflectors forming seven measurement paths (labelled R1 to R7); see the left panel of Fig. 1. Meteorological data was collected from EC.A equipped with a Vaisala HMP50 relative humidity and temperature sensor, a CSI CSAT3 sonic anemometer, a CSI EC150 $\text{CO}_2\text{-H}_2\text{O}$ sensor, a Li-COR 7700 CH_4 sensor, a Kipp and Zonen CNR4 radiometer, and a Gill WindSonic 2D sonic anemometer.

The gases were released at a height of 0.3 m, and the standard CH_4 release rate was 5.8 g min^{-1} , limited mostly to daylight hours. On brief occasions, the CH_4 release rate varied between 2.9 and 20 g min^{-1} to enable testing of mobile CH_4 sensor platforms. Towards the end of the experiment (8 to 12 June), the CH_4 release rate was decreased from 5.8 to 5.0 g min^{-1} and the setup for the Boreal laser measurements was modified with the number of retro-reflectors and paths reduced to six (labelled R8 to R13, see the right panel of Fig. 1). The location of all other CH_4 sensors did not change over the duration of the experiment. The Picarro analysers were not deployed until 21 May, and the CH_4 release rate on 23 and 24 June was constantly varied. Hence, in this article we only consider data between 21 May and 12 June, excluding 26 and 27 May where the release rate was also constantly varied.

The data set used to obtain the results presented in Sect. 5 was compiled by pooling together the separate meteorological and concentration data sets used in the Ginninderra experiment. A common resolution of five minutes was chosen, that is, all measurements of concentration and meteorological variables were averaged over a regular set of five-minute intervals. Measured CH_4 concentrations were then matched with corresponding meteorological measurements by time and placed into long-table format, with each row corresponding to a unique data point.

For path measurements, two extra columns were used to denote the end-point coordinates of the paths.

Initial pre-processing was carried out to provide a complete data set without outliers. First, data containing missing values considered critical for emission-rate estimation (in particular, air temperature, air pressure, wind speed, and wind direction) were removed from the data set. Second, data points corresponding to upwind measurements that were more than three median absolute deviations away from the instrument’s median upwind measured concentration, were determined to be outliers, and hence removed. A point measurement was classified as upwind if the angle subtended from the source by a line joining the instrument location to the plume centreline was more than 45° . A path measurement was classified as upwind if the angles subtended at every point along the path were more than 45° .

3 Transport modelling

In this section we detail the plume model employed, and how it is used to supply model-predicted concentrations for the path measurements.

3.1 Gaussian plume dispersion modelling

As outlined in Sect. 1, we use a transport model that is simply parameterised, and easy to evaluate, so that it can be calibrated online. One of the simplest models that works well on the short distances we consider is the Gaussian plume dispersion model (e.g., Wark et al., 1998, Chapter 4). Here the true emission rate is denoted by Q in g s^{-1} , the height of the CH_4 point source by H in m, and the total number of observations by N . The classic Gaussian plume model is given by

$$C(x_i, y_i, z_i, Q, U_i, H, \boldsymbol{\theta}_{k_i}) = \frac{Q}{2\pi U_i \sigma_{y_i, k_i} \sigma_{z_i, k_i}} \exp\left(-\frac{y_i^2}{2\sigma_{y_i, k_i}^2}\right) \times \left[\exp\left(-\frac{(z_i - H)^2}{2\sigma_{z_i, k_i}^2}\right) + \exp\left(-\frac{(z_i + H)^2}{2\sigma_{z_i, k_i}^2}\right) \right], \quad (1)$$

where C is the *model-predicted* concentration in g m^{-3} of CH_4 at a single spatial point (x_i, y_i, z_i) in m along the direction of the plume corresponding to the i th measurement; U_i is the wind speed associated with the i th measurement in m s^{-1} ; $k_i \in \{A, B, C, D, E, F\}$ represents the Pasquill stability class (Pasquill, 1961) associated with the i th measurement; and $\boldsymbol{\theta}_{k_i}$ are plume-specific parameters used to construct the standard deviations σ_{z_i, k_i} and σ_{y_i, k_i} . These standard deviations of the plume in the vertical and horizontal directions are given by

$$\begin{aligned} \sigma_{z_i, k_i} &= a_{k_i} x_i^{b_{k_i}}, \\ \sigma_{y_i, k_i} &= 0.4651 x_i \tan(\nu_i), \end{aligned}$$

respectively, where $\nu_i = 0.01745 (c_{k_i} - d_{k_i} \ln(x_i/1000))$. Note that the coefficients $a_{k_i}, b_{k_i}, c_{k_i}, d_{k_i}$ correspond to the i th measurement and depend on the stability class associated with that measurement, $k_i \in \{A, B, C, D, E, F\}$. Values for these coefficients by stability class are given in Wark et al. (1998, Chapter 4) and shown here in Table 1 for completeness. We collect the plume-specific parameters in $\boldsymbol{\theta}_{k_i} \equiv (a_{k_i}, b_{k_i}, c_{k_i}, d_{k_i})'$ where $'$ denotes the transpose operator.

The stability class to which an observation is allocated is classically based on (i) the Monin-Obukhov length, and (ii) an effective roughness length. The Monin-Obukhov length (L -value)

Table 1: Stability classes to which observations within the Ginninderra experiment are allocated, and the corresponding values of a_{k_i} , b_{k_i} , c_{k_i} , and d_{k_i} used to construct the horizontal (σ_{y_i, k_i}), and vertical (σ_{z_i, k_i}) standard deviations of the plume when x_i is in m.

Stability Class (k_i)	Stability Condition	a_{k_i}	b_{k_i}	c_{k_i}	d_{k_i}
A	Extremely unstable	0.17993	0.94470	24.167	2.5334
B	Moderately unstable	0.14506	0.93198	18.333	1.8096
C	Slightly unstable	0.11025	0.91465	12.500	1.0857
D	Neutral	0.084739	0.86974	8.3330	0.72382
E	Slightly stable	0.075005	0.83660	6.2500	0.54287
F	Moderately stable	0.054370	0.81558	4.1667	0.36191

is given by $L = -u_*^3 \bar{\xi}_v / (qg(\overline{w^* \xi_v^*})_s)$ (Jacobson, 2005, Chapter 8), where u_* is the frictional velocity, $\bar{\xi}_v$ is the mean virtual potential temperature, $(\overline{w^* \xi_v^*})_s$ is the surface virtual potential temperature flux, q is the von Kármán constant, and g is the acceleration due to gravity. In our case we used WindTrax (<http://www.thunderbeachscientific.com/windtrax.html>) to determine the L -value for each observation; we provide the L -values with the compiled data. We set the effective roughness length $z_0 = 0.01$ m, corresponding to a relatively flat area, with short or no grass, and minimal buildings/trees/other obstacles; see Sienfeld and Pandis (2006, Chapter 16) and World Meteorological Organisation (2008, Chapter 5). This is a suitable choice for the Ginninderra site. We used the results of Golder (1972) to allocate a stability class to each observation based on the L -values provided by WindTrax and $z_0 = 0.01$ m.

The coefficients typically used for each stability class could be off by a factor of 2 or more (Wark et al., 1998, Chapter 4). To show that this is also the case with our categorisation scheme, in Fig. 2 we show the Gaussian-plume-model predicted outputs together with the observed data enhancements (see Sect. 4.1) at one of our measurement locations (namely, EC.A) between 21 May and 7 June, when scaling σ_{y_i, k_i} by 1, 2.5, and 4, respectively. Clearly, with no scaling the predicted plume is too narrow, while with a scaling of 4 is too broad. A scaling of 2.5 gives good agreement. Importantly, since in Eq. (1) Q only serves to scale the outputs vertically, it is apparent that this plume scaling factor is identifiable, in the sense that we can learn it from the data *while* estimating the emission rate (provided the source is active). Online plume-model calibration fits naturally within the MCMC framework discussed in Sect. 4.

3.2 Low wind speeds

It is well known that the Gaussian plume model is less accurate for low wind speeds (e.g., Turner, 1994, Chapter 2). One reason for this is that the wind-speed U_i is in the denominator of the scaling coefficient of Eq. (1); hence, the plume model prediction becomes very sensitive to U_i as it tends towards zero. This is problematic as U_i , although often assumed known, is an average calculated from noisy measurements taken over some time span (in our case five minutes), and is thus itself noisy. Instead of removing data at low wind speeds as is often done (e.g., Feitz et al., 2018), we analyse the relationship between the wind speed and its inverse, and use this relationship to discount low wind-speed model-predictions in the Bayesian framework. This approach relieves the analyst of having to choose a hard cutoff wind-speed when pre-processing the data.

Each wind speed U_i is an average of a number of wind speeds (say n_{U_i}) recorded over five minutes. Therefore U_i is a sample mean, and thus an unbiased estimator of the true (population) mean wind speed, say μ_{U_i} , over this time interval. By the Central Limit Theorem, $\sqrt{n_{U_i}}(U_i - \mu_{U_i}) \xrightarrow{\mathcal{D}} \text{Gau}(0, \sigma_{U_i}^2)$, where \mathcal{D} implies convergence in distribution, $\text{Gau}(\mu, \sigma^2)$ denotes the

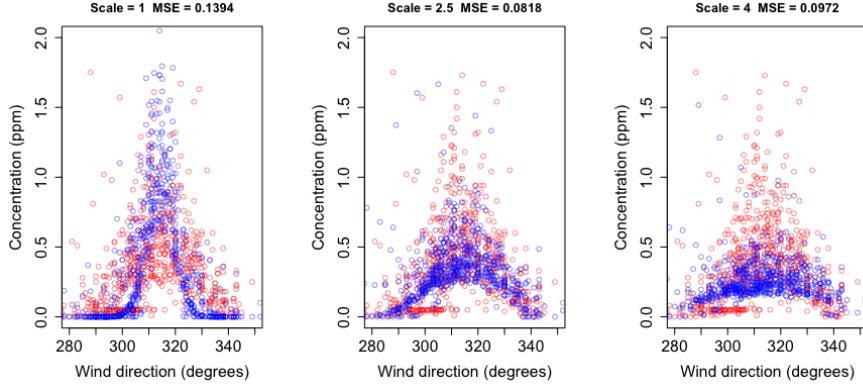


Figure 2: Predicted (blue) and observed (red) enhancements in ppm at EC.A between May 21 and June 7 2015 when scaling σ_{y_i, k_i} by 1, 2.5, and 4, respectively. The mean-squared errors (MSE) between the observed and the predicted enhancements are also shown.

Gaussian distribution with mean μ and variance σ^2 , and $\sigma_{U_i}^2$ is the variance of the wind speeds over the i th time interval, which was derived from the raw (disaggregated) data. We can then use the delta method (e.g., Casella and Berger, 2002, Chapter 5) to deduce that

$$\sqrt{n_{U_i}} \left(\frac{1}{U_i} - \frac{1}{\mu_{U_i}} \right) \xrightarrow{\mathcal{D}} \text{Gau} \left(0, \left(\frac{d}{d\mu_{U_i}} \left(\frac{1}{\mu_{U_i}} \right) \right)^2 \sigma_{U_i}^2 \right).$$

Hence, the variance of $1/U_i$ is approximately

$$\left(\frac{d}{d\mu_{U_i}} \left(\frac{1}{\mu_{U_i}} \right) \right)^2 \sigma_{U_i}^2 = \frac{1}{\mu_{U_i}^4} \sigma_{U_i}^2 \propto \frac{1}{\mu_{U_i}^4}.$$

Therefore, conditional on all other terms in Eq. (1), the variance of the model-predicted concentrations increases as a quartic of the true inverse wind speed. This is important, as it means that model predictions at low wind speeds (e.g., less than 1 m s^{-1}) could be highly uncertain; we show a way of handling this uncertainty when we detail the Bayesian inversion model in Sect. 4.

3.3 Predicted concentrations for point and path measurements

The plume model given by Eq. (1) sets the x -axis as its centreline and the CH_4 source at the origin. The predicted plume-model concentration at a physical location $(\tilde{x}_i, \tilde{y}_i, \tilde{z}_i)$ is thus found by first applying a spatial shift and time-dependent rotation (by wind direction) to $(\tilde{x}_i, \tilde{y}_i, \tilde{z}_i)$ in order to obtain (x_i, y_i, z_i) , which is then used to compute a model-predicted concentration (conditional on Q , U_i , H , and θ_{k_i}). Conversion to ppm is done via the ideal gas law.

Let C_i be a model-predicted concentration ($i = 1, 2, \dots, N$). If C_i corresponds to a point measurement, then one need only evaluate Eq. (1) at the transformed point-measurement location to obtain a predicted concentration. If C_i corresponds to a path measurement, however, it represents an average of concentrations along the path. Denote the transformed end points of the straight-line path in the horizontal plane as $(x_{i,1}, y_{i,1})$ and $(x_{i,2}, y_{i,2})$, respectively. The line between the given points in the horizontal plane can be parametrised by $\rho_i(s) = (\rho_{x,i}(s), \rho_{y,i}(s))'$, where

$$\begin{aligned} \rho_{x,i}(s) &= sx_{i,2} + (1-s)x_{i,1}, & s &\in [0, 1], \\ \rho_{y,i}(s) &= sy_{i,2} + (1-s)y_{i,1}, & s &\in [0, 1], \end{aligned}$$

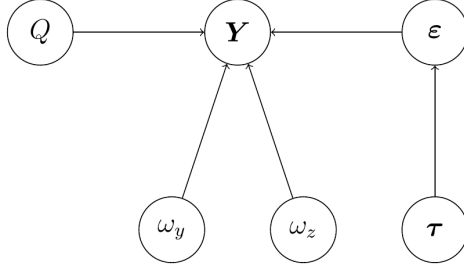


Figure 3: Directed acyclic graph showing the conditional dependence relationships between the data (enhancements) \mathbf{Y} and the error components $\boldsymbol{\varepsilon}$ (Sect. 4.1), the emission rate Q (Sect. 4.2), and the unknown parameters $\boldsymbol{\tau}$, ω_y , and ω_z (Sect. 4.3).

so that

$$C_i = \frac{1}{T_i} \int_0^1 C(\rho_{x,i}(s), \rho_{y,i}(s), z_i, Q, U_i, H, \boldsymbol{\theta}_{k_i}) \left\| \frac{d\boldsymbol{\rho}_i(s)}{ds} \right\| ds, \quad (2)$$

where $T_i \in \mathbb{R}^+$ is the path length and $\|\cdot\|$ is the standard Euclidean norm. In our case, $T_i = \left\| \frac{d\boldsymbol{\rho}_i(s)}{ds} \right\|$, which is not a function of s , and so Eq. (2) simplifies to $C_i = \int_0^1 C(\rho_{x,i}(s), \rho_{y,i}(s), z_i, Q, U_i, H, \boldsymbol{\theta}_{k_i}) ds$. This integral can be approximated numerically over a fine partitioning of J segments $P = \{[s_0, s_1], [s_1, s_2], \dots, [s_{J-1}, s_J]\}$, where $0 = s_0 < s_1 < \dots < s_{J-1} < s_J = 1$. Then

$$C_i \approx \sum_{j=1}^J C(\rho_{x,i}(s_j^*), \rho_{y,i}(s_j^*), z_i, Q, U_i, H, \boldsymbol{\theta}_{k_i}) \Delta_s,$$

where $\Delta_s \equiv s_j - s_{j-1} = 1/J$ and $s_j^* = \frac{s_j + s_{j-1}}{2}$. In our experiments we set $J = 100$.

4 Bayesian atmospheric tomography

We are ultimately interested in obtaining a range of plausible values for the emission rate, Q , *a posteriori*, (i.e., after we have observed some data). In this section we present a hierarchical statistical model that relates Q to the observed concentrations via the Gaussian plume model. Although Q itself is univariate, the model contains several other unknown parameters that capture our uncertainty about the physical and the measurement processes; inferences on these parameters and Q are made simultaneously. For ease of exposition we adopt the terminology of Berliner (1996) to describe the model, which we also summarise graphically in Fig. 3. The top layer in the hierarchy is the data model (Sect. 4.1), the middle layer is the process model (Sect. 4.2), and the bottom layer is the parameter model (Sect. 4.3). In Sect. 4.4 we outline the MCMC strategy we use to make inference with the model.

4.1 The data model

Let $\tilde{\mathbf{Y}} \equiv (\tilde{Y}_1, \tilde{Y}_2, \dots, \tilde{Y}_N)'$ denote the measured concentrations averaged over five-minute intervals. We model each of these averaged measurements as $\tilde{Y}_i = C_i + X_i + \varepsilon_i$, where C_i is the i th Gaussian plume-predicted concentration, X_i is the sum of the i th CH_4 background concentration and instrument-specific bias, and ε_i denotes the random error associated with the i th observed CH_4 concentration. As in Zammit-Mangion et al. (2015) we estimate X_i as the 5th percentile of all the measurements from the instrument associated with the i th measurement.

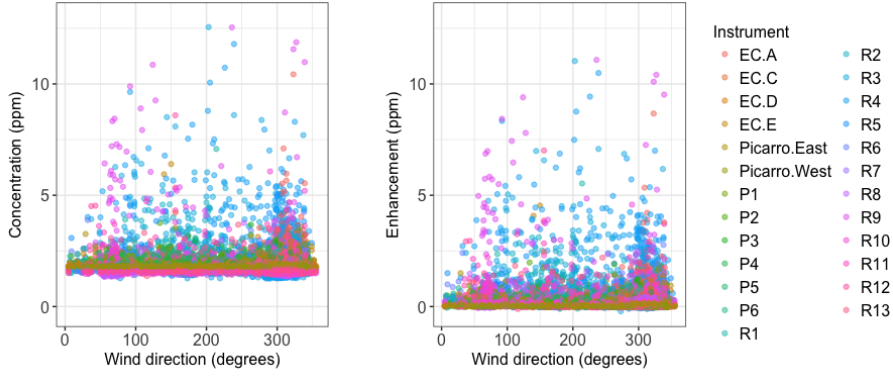


Figure 4: Left: Raw averaged concentrations, plotted by instrument and against wind direction. Right: Enhancements obtained by subtracting off the background and instrument-specific bias.

Figure 4 compares the raw averaged concentrations to those corrected for background and instrument-specific bias, which we term *enhancements*, when plotted against wind direction (in degrees East of North).

Now, let $\mathbf{Y} \equiv (Y_1, Y_2, \dots, Y_N)'$ denote the enhancements. It is straightforward to verify that

$$\begin{aligned} Y_i &= \tilde{Y}_i - X_i \\ &= C_i + \varepsilon_i, \quad i = 1, \dots, N. \end{aligned}$$

Therefore, Y_i is made up of two main components of variability: the Gaussian plume-predicted concentration and a random error term. We assume that the $\varepsilon_i, i = 1, \dots, N$, are Gaussian and independent, but that they are not identically distributed. Specifically, ε_i contains two components of variation, one pertaining to the error characteristics of the instrument, and one to the stability class with which we have categorised the measurement. Recall also from Sect. 3.2 that the precision (variance) of the wind speed decreases (increases) as a quartic of the wind speed.

First, we capture instrument-specific measurement error characteristics and stability-condition-specific variation by introducing an auxiliary variable m_i ($m_i = 1, 2, \dots, M$), where M is the total number of unique combinations of stability class and instrument type, and consider M different precision parameters $\{\tau_{m_i}\}$ that need to be estimated, one for each combination. Second, we take the influence of low wind speeds into account by assuming that the precision of ε_i is τ_{m_i} multiplied by \hat{U}_i , where, for $U_i > 0$,

$$\hat{U}_i = \begin{cases} U_i^4 & 0 < U_i < 1, \\ 1 & U_i \geq 1, \end{cases} \quad (3)$$

which encapsulates our prior belief that observed model-measurement mismatch variability at low wind speeds (in this case under 1 m s^{-1}) are dominated by the low wind speed.

Putting these two components together, we have that, conditional on the instrument type and stability class encoded in m_i ,

$$\varepsilon_i \mid m_i \sim \text{Gau}(0, 1/(\hat{U}_i \tau_{m_i})), \quad i = 1, \dots, N.$$

We detail the prior distribution for τ_{m_i} in Sect. 4.3.1.

4.2 The process model

The process of interest in this application is the emission rate, Q , which we assume is constant. Since in this application $Q \geq 0$, we model it using a half-normal prior distribution,

$$p(Q) = \begin{cases} \frac{\sqrt{2}}{\sigma_Q \sqrt{\pi}} \exp\left(-\frac{Q^2}{2\sigma_Q^2}\right), & Q \in [0, \infty) \\ 0 & \text{otherwise,} \end{cases} \quad (4)$$

with a standard deviation parameter, σ_Q , which is known and fixed. In our case we fixed σ_Q to 1.5 g s^{-1} (90 g min^{-1}) which results in a relatively uninformative prior distribution.

While addressing nonnegativity, half-normal priors do not contain a point mass at zero, and thus do not encode a prior belief that there is a possibility of having exactly a zero emission rate. As a consequence, a posterior estimate or even a credible interval that includes zero is not possible. A spike-and-slab distribution (Mitchell and Beauchamp, 1998) consisting of a diffuse uniform distribution with a point-mass at zero, could be alternatively used at the cost of a slightly more complex model.

4.3 The parameter model

Our parameter model is divided into two parts, one pertaining to the precision parameters $\{\tau_{m_i}\}$ in the random-error component in the data model, and the other to the standard-deviations in the Gaussian-plume dispersion models which, as shown in Section 3.2, are also uncertain.

4.3.1 The precision parameters

For conjugacy with the Gaussian likelihood, we model each τ_{m_i} using a Gamma prior distribution, with shape parameter α , and rate parameter β :

$$p(\tau_{m_i}) = \frac{\beta^\alpha}{\Gamma(\alpha)} \tau_{m_i}^{\alpha-1} e^{-\beta\tau_{m_i}}, \quad i = 1, \dots, N.$$

In our application we set $\alpha = 1.058$ and $\beta = 0.621$. These values were chosen through quantile-matching, such that the 1st and 99th percentiles of the distribution of $1/\sqrt{\tau_{m_i}}$ are approximately 0.35 ppm and 6.5 ppm, respectively (giving a mode close to 0.7 ppm). Values for these percentiles were selected based on prior exploratory data analysis of the measurements that were taken upwind of the source.

4.3.2 The Gaussian plume model parameters

From separate studies into the reliability of the model values for σ_{y_i, k_i} and σ_{z_i, k_i} , briefly discussed in Sect. 3, we concluded that these parameters could indeed be off by factors of two or more and that, if they are off, they are so by similar amounts for each stability class. These factors correspond to vertical shifts of the Pasquill stability curves when plotted on a log-log scale (e.g., Wark et al., 1998, Chapter 4). We thus replaced σ_{y_i, k_i} and σ_{z_i, k_i} in Eq. (1) with $\tilde{\sigma}_{y_i, k_i}$ and $\tilde{\sigma}_{z_i, k_i}$, respectively, where

$$\tilde{\sigma}_{y_i, k_i} \equiv \omega_y \sigma_{y_i, k_i} \quad \text{and} \quad \tilde{\sigma}_{z_i, k_i} \equiv \omega_z \sigma_{z_i, k_i},$$

and $\omega_y, \omega_z \in \mathbb{R}^+$ are scaling parameters for σ_{y_i, k_i} and σ_{z_i, k_i} , respectively (Borysiewicz et al., 2012).

We use Gamma prior distributions for ω_y and ω_z . In our application we set the shape parameters equal to 1.6084, and the rate parameters equal to 0.7361. These parameters give

approximate 1st and 99th percentiles of 0.1 and 8, respectively, and a mode close to 1 (representative of no scalar influence on σ_{y_i, k_i} or σ_{z_i, k_i}). This reflects our prior belief that the standard deviations could be up to an order of magnitude off from those derived using classical Pasquill stability-class theory.

4.4 Bayesian inference

Let $\mathbf{Y} \equiv (Y_1, Y_2, \dots, Y_N)'$ denote the N observed enhancements. Similarly, define $\mathbf{U} \equiv (U_1, U_2, \dots, U_N)'$ and $\Theta \equiv (\theta_{k_1}, \theta_{k_2}, \dots, \theta_{k_N})'$. Further, let $\boldsymbol{\tau} \equiv (\tau_1, \tau_2, \dots, \tau_M)'$ be the M parameters associated with each combination of instrument type and stability class. The posterior distribution of the emission rate Q is then given by

$$\begin{aligned} p(Q | \mathbf{Y}, \mathbf{U}, H, \Theta) &\propto \int_0^\infty \int_0^\infty \int_{\mathbb{R}^{M+}} p(\mathbf{Y}, \boldsymbol{\tau}, \omega_y, \omega_z | Q, \mathbf{U}, H, \Theta) p(Q) d\boldsymbol{\tau} d\omega_y d\omega_z \\ &= p(Q) \int_0^\infty \int_0^\infty \int_{\mathbb{R}^{M+}} p(\mathbf{Y} | Q, \boldsymbol{\tau}, \omega_y, \omega_z, \mathbf{U}, H, \Theta) p(\boldsymbol{\tau}) p(\omega_y) p(\omega_z) d\boldsymbol{\tau} d\omega_y d\omega_z, \end{aligned}$$

where $p(Q)$ is given by Eq. (4) and $p(\mathbf{Y} | Q, \boldsymbol{\tau}, \omega_y, \omega_z, \mathbf{U}, H, \Theta)$ is the likelihood, which is Gaussian.

Computation of the the posterior distribution $p(Q | \mathbf{Y}, \mathbf{U}, H, \Theta)$ involves a high-dimensional integral that is analytically intractable. We therefore use MCMC, specifically a Gibbs sampler, to obtain samples from the posterior distributions of Q , $\boldsymbol{\tau}$, ω_y , and ω_z (see [Gelman et al., 2013](#), for a comprehensive introduction to MCMC). The Gibbs sampler samples each parameter one at a time from their respective full conditional distributions, where conditioning is done using the most recent samples of all other parameters.

In the case of $\boldsymbol{\tau}$, use of Gamma prior distributions leads to full conditional distributions that are also Gamma. Hence, sampling $\boldsymbol{\tau}$ is straightforward. However, the prior distributions on the other parameters are not conjugate priors, and hence the full conditional distributions for each of these are not available in closed form. We therefore use standard Metropolis-within-Gibbs to sample from these conditional distributions, with Gaussian proposals and adaptive scaling during the early stages of the MCMC algorithm. Specifically, for each parameter, the standard deviation of the proposal was increased or decreased as appropriate whenever the acceptance rate fell below 10% or exceeded 80%.

5 Results and Discussion

5.1 Observing system simulation experiment

In this section we discuss results from applying our model to simulated data in an observing system simulation experiment (OSSE). To mimic the conditions in the real experiment, we simulated enhancements using the actual Boreal and EC instrument locations, meteorological observations from the Ginninderra data, and realistic variances for the random-error components. We considered the two release-rate periods separately, using a 6 g min^{-1} emission rate in the first, and a 12 g min^{-1} emission rate in the second. As in the real experiment, the first Boreal laser/reflector setup (seven paths) was used in the first release-rate period, while the second setup (six paths) was used in the second release-rate period; the EC tower locations were kept constant for both periods. We set the precisions $\tau_{m_i} = 4$ for $m_i = 1, \dots, M$, and the scaling factors $\omega_y = \omega_z = 2$ to assess the algorithm's ability to calibrate the plume on-line.

Table 2: Posterior median emission rates in g min^{-1} , and the posterior 95% credible intervals of the emission rate in g min^{-1} , ω_y , and ω_z from the OSSE. Results shown are from simulated data corresponding to the Boreals (B) and EC towers (E) when the emission rate is 6 g min^{-1} (E1 and B1) and 12 g min^{-1} (E2 and B2).

	Median Q	Q	ω_y	ω_z
B1	6.0718	(5.7847, 6.3511)	(0.17978, 7.1675)	(1.8871, 2.1378)
E1	6.0369	(5.5695, 6.5300)	(1.7510, 2.1051)	(1.7382, 2.2167)
B2	12.122	(11.820, 12.409)	(0.17451, 6.7320)	(1.9066, 2.0295)
E2	11.756	(10.884, 12.761)	(1.7785, 2.0533)	(1.7810, 2.2151)

Following data simulation, we used MCMC to generate 60000 samples, left out 20000 of these as burn-in, and used a thinning factor of 10. Adaptation of the Metropolis samplers was only done during burn-in. Convergence was assessed through visual inspection of the MCMC trace plots.

We made inference on Q , as well as all other parameters in the model, for the Boreal- and EC-simulated data and the two emission rate settings. Table 2 shows the posterior median emission rates, the 95% posterior credible intervals for the emission rate, as well as the intervals for the plume standard-deviation scaling parameters ω_y , and ω_z . In all cases, we see that the true (simulated) emission rate is captured within our posterior credible intervals, and that the median estimates are very close to the true values. Interestingly, we see that while the plume-scaling coefficients have been accurately recovered in most cases, the posterior uncertainty over ω_y for the Boreals is very wide. This suggests that ω_y might not be identifiable for path measurements, possibly because the averaging effect of the line integral renders the measured concentration insensitive to a specific plume width in the horizontal direction.

5.2 Application to the Ginninderra data set

In this section we discuss results from applying our model to enhancements from the compiled Ginninderra data. We considered several settings. In the first setting, we estimated the emission rate separately for each of the four instrument types, and for each release-rate period (5.8 g min^{-1} and 5.0 g min^{-1}) when the source was active. In addition, for each release-rate period we estimated the emission rate for all the instruments combined, yielding a total of ten inversion results. In the second setting we estimated the emission rate for the same ten cases, but for periods when the source was switched off. In the third setting we again considered the same ten cases, but using only measurements that were taken when upwind of the source. These three settings serve to demonstrate how our inferences adapt to the various settings one might encounter in the field. In particular, online plume calibration is almost impossible in the latter two settings, and we expect this to result in large posterior uncertainties on the scaling coefficients, and also the emission rate in the third setting. In the second setting downwind measurements are present. Therefore, while online plume calibration is again almost impossible since there is no active source, the absence of a source ($Q = 0$) should be reflected in our posterior inferences (recall, however, that use of a half-normal prior distribution precludes the possibility of a zero emission rate being estimated; see Sect. 4.2).

As in the OSSE, we generated 60000 MCMC samples, left out 20000 of these as burn-in, and used a thinning factor of 10. In line with what we observed in the OSSE, our initial results showed that, more often than not, ω_y is not identifiable (leading to wide posterior distributions and poor MCMC mixing) when attempting to estimate the emission rate with the source

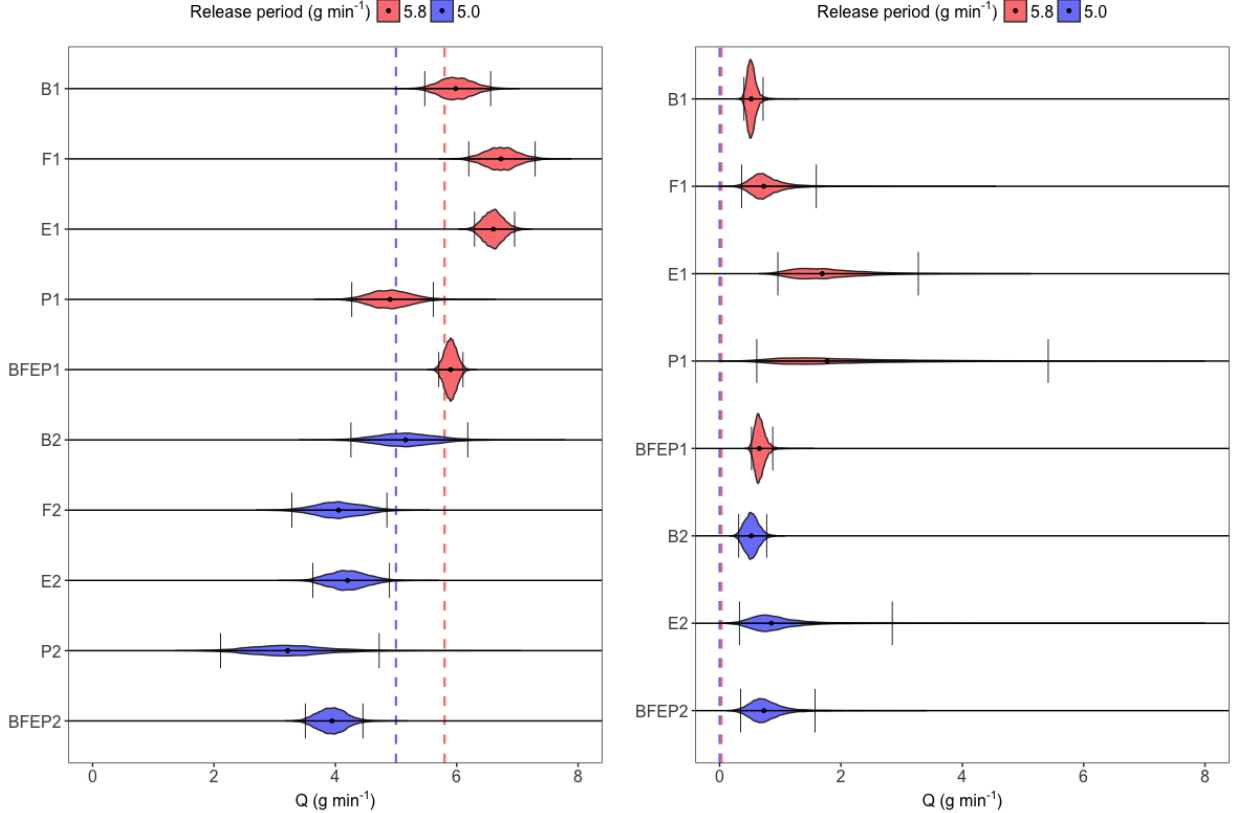


Figure 5: Left: posterior empirical distributions of the emission rate Q in g min^{-1} , for the Bo-reals (B), FTIRs (F), EC towers (E), Picarro analysers (P), and the ensemble of all instruments (BFEP), for each release-rate period (1 and 2) during the Ginninderra experiment. The 5.8 g min^{-1} release-rate period is shown in red (B1, F1, E1, P1, and BFEP1), while the 5.0 g min^{-1} release-rate period is shown in blue (B2, F2, E2, P2, and BFEP2). The vertical dashed lines denote the respective true emission rates, the black dot represents the median estimate, and the vertical bars represent the upper and lower limits of the 95% posterior credible interval. Right: same as left but using measurements taken when the methane point source was inactive.

switched on with *path* measurements. We therefore chose to fix $\omega_y = 1$ (but not ω_z) for path measurements, and this choice is reflected in all the results discussed below.

The left panel of Fig. 5 summarises our results for Q in the first setting (both upwind and downwind measurements with the source switched on); full results are given in the first ten rows of Table A1. While our posterior inferences are reflective of the true underlying emission rate, unlike in the OSSE we see that with the real data the true values were not always captured within our 95% posterior credible intervals. This suggests that there are other important factors at play (e.g., with the meteorological data such as ambient temperature or wind direction, that we assume are fixed and known) that are not (or not fully) accounted for in our model. Despite this, our worst-case scenario, obtained with the combination of all instruments in the 5.0 g min^{-1} release-rate period, had an interval limit which was only 0.55 g min^{-1} (approximately 11%) off from the true value, while all posterior medians were within 36% of the true value (within 22% if one ignored results from the Picarro analysers during the 5.0 g min^{-1} release-rate period). This is encouraging because a single, common inference method was used to obtain the inferences from data at a common temporal resolution – no manual instrument-specific tuning was carried out. The approach thus seems relatively robust to instrument type; in Sect. 6 we

show this is no longer the case once certain components in our model are assumed fixed and known.

The first ten rows of Table [A1](#) also show the 95% posterior credible intervals for ω_y and ω_z . None of the obtained credible intervals for ω_y contain 1, and the results corroborate the conclusion from our exploratory data analysis in Sect. [3.1](#) that a plausible value for ω_y is about 2 or 3. This result lends credence to our ability to calibrate the Pasquill stability-class curves corresponding to σ_{y_i, k_i} while estimating the emission rate with point measurements. There was less agreement on ω_z in the inversions, suggesting that something more complex than a simple scaling is required (or that the model used for σ_{z_i, k_i} is, in this case, inappropriate) for calibrating the Pasquill stability-class curves corresponding to σ_{z_i, k_i} . Nonetheless, in Sect. [6](#) we show that our emission-rate estimates from point measurements were relatively less sensitive to the assumption $\omega_z = 1$ than to the assumption $\omega_y = 1$.

The right panel in Fig. [5](#) summarises our results for Q in the second setting (both upwind and downwind measurements with the source switched off), while full results are given in the second set of ten rows in Table [A1](#). Recall from Sect. [4.2](#) that due to the choice of prior over Q (a half-normal distribution), it is not possible for the 95% credible interval to include zero. Clearly, however, the intervals for Q are close to zero and are suggestive of a small emission rate. As expected, the plume standard-deviation scaling parameters are not well-constrained in this setting when the source is off: Narrow credible intervals on the emission rate here are only possible when the measurement is largely insensitive to the plume shape. This is indeed the case for the Boreal paths, some of which pass very close to the source. With other instrument configurations, uncertainty in the plume scalings dominates. In some cases (FTIRs and Picarro analysers in the 5.0 g min⁻¹ release-rate period) our MCMC algorithm did not converge after the 60000 samples; these results are thus omitted from Fig. [5](#) and Table [A1](#).

The bottom ten rows in Table [A1](#) give full results in the third setting (upwind measurements only with the source switched on). In this setting the 95% posterior credible intervals produced for the emission rates are very wide (most with a range of over 100 g min⁻¹), as are those produced for ω_y and ω_z : Our posterior distributions are largely uninformative. This was expected since upwind measurements contain no information on both the emission rate *and* the plume model parameters. These results from upwind measurements serve as verification, and confirm that we are indeed relying on useful information from downwind measurements when making inference on the emission rate and other parameters that appear within our model.

6 Sensitivity of results to model components

As detailed throughout Sect. [4](#), the Bayesian model we employ contains many parameters that are updated using MCMC. A natural question to ask is whether all these parameters do need to be updated, and what the effects on the emission rate inferences are when instead some of these are assumed fixed and known. Specifically, we are interested in seeing what happens when: (i) considering only one single precision parameter τ for all of the data regardless of stability class and/or instrument group; (ii) considering one τ_{m_i} per instrument group only; (iii) not accounting for plume-model variability in low wind speeds (i.e., setting $\hat{U} = 1$); (iv) not updating ω_y when using point measurements; (v) not updating ω_z ; and (vi) not updating both ω_y and ω_z when using point measurements. The 95% credible intervals for Q in g min⁻¹ for all these settings and for each of the 10 groupings considered in Sect. [5](#) are given in Table [A2](#).

Grouping the precision parameters $\{\tau_{m_i}\}$ parameters by instrument only (instead of by instrument *and* stability class) had a slightly negative impact on the emission-rate estimates obtained during the second release-rate period, but less so during the first release-rate period. Assuming (and fixing) $\omega_z = 1$ for both the point and path measurements also did not have a serious impact on the emission-rate estimates. Note that this does not mean that these

components are not relevant in the general model – for example, from our estimates of ω_z in Table A1 we see $\omega_z = 1$ would be a plausible choice for this experiment if one opted to fix ω_z (while $\omega_y = 1$ would not be).

On the other hand several components in our model appear to be crucial to obtaining reasonable emission-rate estimates. Using a single precision parameter to capture all observed variability due to measurement error and the stability-class categorisation clearly had a negative impact on our emission-rate estimates. Similarly, assuming the variability of the measurements is independent of wind speed when doing inversion resulted in 95% posterior credible intervals on the emission rate that are considerably shifted in the negative direction. A similar observation was made by (Feitz et al., 2018, p. 207) when analysing data from the Boreal lasers. There, observations with wind speeds below 1.5 m s^{-1} were removed to mitigate this effect. An attractive feature of the proposed model in this article is that the “soft” de-weighting of measurements at low wind speeds eliminates the need to determine a hard cutoff value when doing the analysis.

The scaling factor ω_y is clearly also crucial for obtaining emission-rate estimates of practical significance for point measurements, with the ensuing emission-rate estimates often being off by nearly a factor of two when $\omega_y = 1$ is assumed. As expected, the width of the credible intervals on the emission rate decreased substantially when $\omega_y = \omega_z = 1$ was assumed, indicating that ω_y and ω_z play a big role in quantifying uncertainty on the emission rate. Therefore, as noted in other studies discussed in Sect. 1, incorporating uncertainty in the transport model by treating parameters within the model itself as uncertain (note that this is different from adding another component of variability in the data model, as is often done) is likely to have a positive impact on emission-rate estimates and uncertainty quantification.

7 Conclusions

In this article we have proposed a fully Bayesian model for atmospheric tomography that takes into account uncertainty in the data measurement process, the physical processes, and parameters appearing in the transport model, when estimating the emission rate. We see that the model is robust to different instrument types and configurations, and provides useful inferences on the emission rate and the plume dispersion model used. When applied to the Ginninderra data using a variety of instruments in different release-rate periods, we obtain 95% posterior credible intervals on the emission rate that either encapsulate the true emission rate, or that have a limit which is no more than 11% from the true value.

Our results provide interesting insights into the design and monitoring of sensor networks for detecting and quantifying methane emissions. For example, our sensitivity analysis in Sect. 6 showed that estimates using the two Picarro analysers were particularly sensitive to assumptions made on the model plume parameters. Moreover, when uncertainty on these parameters was considered, the release-rate estimates from these instruments tended to be uncertain. This is despite the Picarro analysers being among the more accurate and expensive instruments used in the study. Uncertainty in our experiment is, as is often the case, dominated by that in the transport model. Hence, the number of instruments used, the proximity of the instruments to the source, and their configuration around the source, appear to be more important design criteria than instrument accuracy when the inferential target is emission-rate quantification of a point source. Our results also provide insight on the transport model used. For example, close inspection of our posterior inferences for τ indicated that across all instrument groups and for both release-rate periods, the model-data mismatch was much lower for the more neutral stability classes C and D, than for the more stable/unstable classes A and F.

The fully Bayesian framework we adopt is adaptable to various scenarios. We envision, for example, that source localisation (e.g., (Hirst et al., 2013; Humphries et al., 2012)) could

be done in tandem with plume-model calibration within an inversion framework, provided several instruments in suitable configurations (as in the Ginninderra experiment) are available. Future work will also investigate how uncertainty in other meteorological variables such as wind-direction, as well as the stability-class categorisation adopted (possibly via z_0) could be incorporated within the model.

Code and data availability. Software code and data are available at <https://github.com/Lcartwright94/BayesianAT>.

References

- Basu, S., Baker, D. F., Chevallier, F., Patra, P., Liu, J., and Miller, J.: The impact of transport model differences on CO₂ surface flux estimates from OCO-2 retrievals of column average CO₂, *Atmospheric Chemistry and Physics*, 18, 7189–7215, 2018.
- Berliner, L. M.: Hierarchical Bayesian time series models, in: *Maximum Entropy and Bayesian Methods*, edited by Hanson, K. M. and Silver, R. N., pp. 15–22, Springer, New York, NY, 1996.
- Borysiewicz, M., Wawrzynczak, A., and Kopka, P.: Stochastic algorithm for estimation of the model’s unknown parameters via Bayesian inference, *Proceedings of the Federated Conference on Computer Science and Information Systems*, Wroclaw, Poland, 501–508, 2012.
- Casella, G. and Berger, R. L.: *Statistical Inference*, Duxbury Press, Pacific Grove, CA, 2nd edn., 2002.
- Chevallier, F., Feng, L., Bösch, H., I. Palmer, P., and Rayner, P.: On the impact of transport model errors for the estimation of CO₂ surface fluxes from GOSAT observations, *Geophysical Research Letters*, 37, L21803, 2010.
- Feitz, A., Schroder, I., Phillips, F., Coates, T., Neghandhi, K., Day, S., Luhar, A., Bhatia, S., Edwards, G., Hrabar, S., Hernandez, E., Wood, B., Naylor, T., Kennedy, M., Hamilton, M., Hatch, M., Malos, J., Kochanek, M., Reid, P., Wilson, J., Deutscher, N., Zegelin, S., Vincent, R., White, S., Ong, C., George, S., Maas, P., Towner, S., and Griffith, D.: The Ginninderra CH₄ and CO₂ release experiment: an evaluation of gas detection and quantification techniques, *International Journal of Greenhouse Gas Control*, 70, 202–224, 2018.
- Ganesan, A. L., Rigby, M., Zammit-Mangion, A., J. Manning, A., Prinn, R., Fraser, P., Harth, C. M., Kim, K.-R., B. Krummel, P., Li, S., Mühle, J., O’Doherty, S., Park, S., K. Salameh, P., P. Steele, L., and Weiss, R.: Characterization of uncertainties in atmospheric trace gas inversions using hierarchical Bayesian methods, *Atmospheric Chemistry and Physics*, 14, 3855–3864, 2014.
- Gelman, A., Stern, H. S., Carlin, J. B., Dunson, D. B., Vehtari, A., and Rubin, D. B.: *Bayesian Data Analysis*, Chapman & Hall/CRC Press, Boca Raton, FL, third edn., 2013.
- Golder, D.: Relations among stability parameters in the surface layer, *Boundary-Layer Meteorology*, 3, 47–58, 1972.
- Hirst, B., Jonathan, P., del Cueto, F. G., Randell, D., and Kosut, O.: Locating and quantifying gas emission sources using remotely obtained concentration data, *Atmospheric Environment*, 74, 141–158, 2013.

- Houwelling, S., Bergamaschi, P., Chevallier, F., Heimann, M., Kaminski, T., Krol, M., Michalak, A. M., and Patra, P.: Global inverse modeling of CH₄ sources and sinks: an overview of methods, *Atmospheric Chemistry and Physics*, 17, 235–256, 2017.
- Humphries, R., Jenkins, C., Leuning, R., Zegelin, S., Griffith, D., Caldow, C., Berko, H., and Feitz, A.: Atmospheric tomography: a Bayesian inversion technique for determining the rate and location of fugitive emissions, *Environmental Science and Technology*, 46, 1739–1746, 2012.
- International Energy Agency: *Energy Technology Perspectives 2017*, OECD/IEA, Paris, France, 2017.
- Jacobson, M. Z.: *Fundamentals of Atmospheric Modeling*, Cambridge University Press, New York, NY, 2nd edn., 2005.
- Jenkins, J. D., Luke, M., and Thernstrom, S.: Getting to zero carbon emissions in the electric power sector, *Joule*, 2, 2487–2510, 2018.
- Jones, M., Goldstein, M., Jonathan, P., and Randell, D.: Bayes linear analysis for Bayesian optimal experimental design, *Journal of Statistical Planning and Inference*, 171, 115–129, 2016.
- Kinnon, M. A. M., Brouwer, J., and Samuelsen, S.: The role of natural gas and its infrastructure in mitigating greenhouse gas emissions, improving regional air quality, and renewable resource integration, *Progress in Energy and Combustion Science*, 64, 62–92, 2018.
- Lucas, D. D., Simpson, M., Cameron-Smith, P., and Baskett, R. L.: Bayesian inverse modeling of the atmospheric transport and emissions of a controlled tracer release from a nuclear power plant, *Atmospheric Chemistry and Physics*, 17, 13 521–13 543, 2017.
- Luhar, A. K., Etheridge, D. M., Leuning, R., Loh, Z. M., Jenkins, C. R., and Yee, E.: Locating and quantifying greenhouse gas emissions at a geological CO₂ storage site using atmospheric modeling and measurements, *Journal of Geophysical Research: Atmospheres*, 119, 10 959–10 979, 2014.
- Miller, S. M., Hayek, M. N., Andrews, A. E., Fung, I., and Liu, J.: Biases in atmospheric CO₂ estimates from correlated meteorology modeling errors, *Atmospheric Chemistry and Physics*, 15, 2903–3914, 2015.
- Mitchell, T. J. and Beauchamp, J. J.: Bayesian variable selection in linear regression, *Journal of the American Statistical Association*, 83, 1023–1032, 1998.
- Pasquill, F.: The estimation of the dispersion of wind-borne material, *The Meteorological Magazine*, 90, 33–49, 1961.
- Peylin, P., Baker, D., Sarmiento, J., Ciais, P., and Bousquet, P.: Influence of transport uncertainty on annual mean and seasonal inversions of atmospheric CO₂ data, *Journal of Geophysical Research: Atmospheres*, 107, ACH 5–1–ACH 5–25, 2002.
- Rajaona, H., Septier, F., Armand, P., Delignon, Y., Olry, C., Albergel, A., and Moussafir, J.: An adaptive Bayesian inference algorithm to estimate the parameters of a hazardous atmospheric release, *Atmospheric Environment*, 122, 748–762, 2015.

- Riddick, S. N., Connors, S., Robinson, A. D., Manning, A. J., Jones, P. S. D., Lowry, D., Nisbet, E., Skelton, R. L., Allen, G., Pitt, J., and Harris, N. R. P.: Estimating the size of a methane emission point source at different scales: from local to landscape, *Atmospheric Chemistry and Physics*, 17, 7839–7851, 2017.
- Sepulveda, N. A., Jenkins, J. D., de Sisternes, F. J., and Lester, R. K.: The role of firm low-carbon electricity resources in deep decarbonisation of power generation, *Joule*, 2, 2403–2420, 2018.
- Sienfeld, J. H. and Pandis, S. N.: *Atmospheric Chemistry and Physics: From Air Pollution to Climate Change*, John Wiley & Sons, Hoboken, NJ, 2nd edn., 2006.
- Tarantola, A.: *Inverse Problem Theory and Methods for Model Parameter Estimation*, siam, Philadelphia, PA, 2005.
- Turner, B.: *Workbook of Atmospheric Dispersion Estimates*, Lewis Publishers, Boca Raton, FL, 2nd edn., 1994.
- Wang, Y., Huang, H., Huang, L., and Ristic, B.: Evaluation of Bayesian source estimation methods: A comparison of likelihood functions and distance measures, *Atmospheric Environment*, 152, 519–530, 2017.
- Wark, K., Warner, C. F., and Davis, W. T.: *Air Pollution: Its Origin and Control*, Addison Wesley Longman, Menlo Park, CA, 1998.
- White, E. D., Rigby, M., Lunt, M. F., Ganesan, A. L., Manning, A. J., O’Doherty, S., Stavert, A. R., Stanley, K. M., Williams, M., Smallman, T. L., Comyn-Platt, E., Levy, P., Ramonet, M., and Palmer, P. I.: Quantifying the UKs carbon dioxide flux: an atmospheric inverse modelling approach using a regional measurement network, *Atmos. Chem. and Phys. Discussions*, in review, 2018.
- World Meteorological Organisation: *Guide to Meteorological Instruments and Methods of Observation*, URL https://library.wmo.int/pmb_ged/wmo_8_en-2012.pdf, 2008.
- Zammit-Mangion, A., Cressie, N., Ganesan, A. L., O’Doherty, S., and Manning, A. J.: Spatio-temporal bivariate statistical models for atmospheric trace-gas inversion, *Chemometrics and Intelligent Laboratory Systems*, 15, 227–241, 2015.

A Full results

Table A1: Posterior median emission rate in g min^{-1} , and the posterior 95% credible intervals for the emission rate in g min^{-1} , ω_y , and ω_z , for the Boreals (B), FTIRs (F), EC towers (E), Picarro analysers (P), and an ensemble of all instruments (BFEP), for each release-rate period (5.8 g min^{-1} (1), and 5.0 g min^{-1} (2)) under various settings. Dashes correspond to parameters that were not updated via MCMC. Results for which MCMC did not converge are marked as NA.

Setting	Group	Median Q	Q	ω_y	ω_z
Source on (Upwinds & Downwinds)	B1	5.9833	(5.4733, 6.5593)	—	(3.2062, 4.2104)
	F1	6.7301	(6.1985, 7.2937)	—	(1.4347, 1.8164)
	E1	6.6048	(6.2942, 6.9537)	(2.4946, 2.7848)	(1.0868, 1.1954)
	P1	4.9028	(4.2710, 5.6136)	(2.6065, 3.6707)	(0.41664, 0.64341)
	BFEP1	5.9008	(5.7050, 6.1038)	(2.3360, 2.5640)	(1.1944, 1.2989)
	B2	5.1552	(4.2571, 6.1820)	—	(0.84608, 1.1288)
	F2	4.0525	(3.2838, 4.8497)	—	(0.66723, 1.0944)
	E2	4.2017	(3.6297, 4.8923)	(1.4899, 2.1671)	(0.90941, 1.0981)
	P2	3.2135	(2.1071, 4.7236)	(2.0250, 5.2798)	(0.34677, 0.63648)
	BFEP2	3.9455	(3.5054, 4.4543)	(1.7138, 2.5325)	(0.97964, 1.1437)
Source off (Upwinds & Downwinds)	B1	0.52073	(0.40106, 0.71608)	—	(1.3051, 5.0262)
	F1	0.72641	(0.36438, 1.5935)	—	(1.2565, 9.0531)
	E1	1.6906	(0.95997, 3.2742)	(10.768, 21.971)	(3.1036, 11.826)
	P1	1.7798	(0.61237, 5.6367)	(3.3985, 13.853)	(0.31311, 7.3589)
	BFEP1	0.65416	(0.52512, 0.87510)	(7.0545, 12.789)	(2.2381, 5.3166)
	B2	0.52202	(0.31479, 0.77494)	—	(0.84995, 1.5319)
	F2	NA	NA	—	NA
	E2	0.85549	(0.32681, 3.3683)	(2.3136, 11.371)	(0.50337, 7.9746)
	P2	NA	NA	NA	NA
	BFEP2	0.72846	(0.34557, 1.5735)	(2.7823, 9.5185)	(0.97971, 7.1704)
Source on (Upwinds only)	B1	62.452	(2.7445, 206.22)	—	(0.16883, 6.8461)
	F1	61.651	(3.2040, 207.05)	—	(0.17249, 6.5361)
	E1	16.136	(7.5484, 41.030)	(4.5921, 6.9288)	(1.2708, 8.7488)
	P1	22.913	(2.0052, 168.70)	(0.15931, 9.2038)	(0.23560, 7.7829)
	BFEP1	15.723	(7.1673, 39.188)	(4.7485, 6.9568)	(1.4798, 8.8789)
	B2	88.353	(5.6799, 244.48)	—	(0.27891, 6.0868)
	F2	58.568	(2.7772, 192.74)	—	(0.18217, 6.4708)
	E2	39.728	(3.2357, 180.33)	(0.23683, 5.7448)	(0.19650, 6.8680)
	P2	42.996	(1.9088, 185.75)	(0.13023, 5.2626)	(0.18403, 6.9436)
	BFEP2	37.909	(2.9071, 186.65)	(0.22048, 5.4364)	(0.28261, 7.1149)

Table A2: Posterior 95% credible intervals for the emission rates in g min^{-1} for the Boreals (B), FTIRs (F), EC towers (E), Picarro analysers (P), and an ensemble of all instruments (BFEP), for each release-rate period (5.8 g min^{-1} (1), and 5.0 g min^{-1} (2)), and for various alterations to the model as detailed in Sect. 6. Dashes correspond to redundant case (e.g., $\omega_y = 1$ was assumed for all path measurements in the full model).

Group	Full model	Assuming $\tau_{m_i} = \tau$ for $m_i = 1, \dots, M$	Assuming $\{\tau_{m_i}\}$ are only instrument-group dependent	Assuming $\hat{U} = \mathbf{1}$
B1	(5.4733, 6.5593)	—	(4.7238, 5.6727)	(2.6092, 3.1975)
F1	(6.1985, 7.2937)	—	(5.9526, 7.1190)	(3.6482, 4.7116)
E1	(6.2942, 6.9537)	—	(6.2062, 7.0047)	(5.4894, 5.9759)
P1	(4.2710, 5.6136)	—	(4.8748, 6.1139)	(2.9868, 3.9053)
BFEP1	(5.7050, 6.1038)	(4.7252, 5.2433)	(5.8133, 6.2731)	(3.4032, 3.6424)
B2	(4.2571, 6.1820)	—	(4.0863, 6.4436)	(2.5337, 3.5319)
F2	(3.2838, 4.8497)	—	(2.7180, 4.2555)	(1.4055, 2.1349)
E2	(3.6297, 4.8923)	—	(3.2692, 9.4560)	(3.1329, 4.1516)
P2	(2.1071, 4.7236)	—	(1.6784, 4.7147)	(1.8451, 3.0813)
BFEP2	(3.5054, 4.4543)	(2.5283, 3.4837)	(2.3224, 3.2790)	(1.9421, 2.4779)
Group	Assuming $\omega_y = 1$		Assuming $\omega_z = 1$	Assuming $\omega_y = \omega_z = 1$
B1	—		(4.0341, 4.7974)	—
F1	—		(5.4152, 6.3851)	—
E1	(3.3635, 3.7084)		(6.8646, 7.5289)	(3.6129, 3.8937)
P1	(2.0142, 2.5424)		(5.8880, 7.5225)	(2.6043, 3.4691)
BFEP1	(3.6176, 3.8644)		(5.9888, 6.3946)	(3.8251, 4.0726)
B2	—		(4.3543, 5.7021)	—
F2	—		(3.2608, 4.7770)	—
E2	(2.6442, 3.5321)		(3.6982, 4.7588)	(2.7116, 3.3605)
P2	(0.93638, 5.2326)		(1.8757, 4.2556)	(0.91678, 1.9052)
BFEP2	(2.4699, 3.0227)		(3.6202, 4.5213)	(2.5319, 3.0744)

Author contribution. LC compiled the data with the help of all authors and ran all the analyses. LC and AZM conducted the research. AF conceptualised and supervised the study. LC, AZM, and AF wrote the manuscript. SB conducted an initial investigation using a simplified version of the proposed model. IS, FP, TC, KN, TN, MK, SZ, NW and ND acquired the field data for the study. All authors discussed the results and commented on the manuscript.

Competing interests. The authors declare that they have no conflict of interest.

Acknowledgements. LC acknowledges support of the Australian Government Research Training Program Scholarship. AZM is supported by an Australian Research Council (ARC) Discovery Early Career Research Award (DECRA), DE180100203. LC, AZM, and AF would like to acknowledge APR.Intern for facilitating the first five months of this modelling study. ND is supported by an ARC Future Fellowship, FT180100327. All authors thank Gareth Davies for reviewing an earlier version of this manuscript. The Ginninderra field site was supported by the Australian Government through the Carbon Capture and Storage Implementation budget measure. The authors also acknowledge funding for the research provided by the Australian Government through the CRC program and support from the CO2CRC. The National Geose-

questration Laboratory is thanked for making the two Picarro instruments available for the study. We would like to thank Phil Dunbar and his staff (CSIRO Plant Industry) for maintaining the site and Dale Hughes (CSIRO) for his assistance with maintenance of the CSIRO EC tower. The authors also wish to acknowledge the assistance of Field Engineering Services at Geoscience Australia. Geoscience Australia and the Western Sydney University team would like to acknowledge Charles Jenkins (CSIRO) for early discussions about the atmospheric tomography line technique and the Australian Mathematical Sciences Institute. The University of Wollongong wishes to acknowledge Joel Wilson, Maximilien Desservettaz, and Ruhi Humphries for their assistance in the site operations. AF and IS publish with the permission of the CEO, Geoscience Australia.