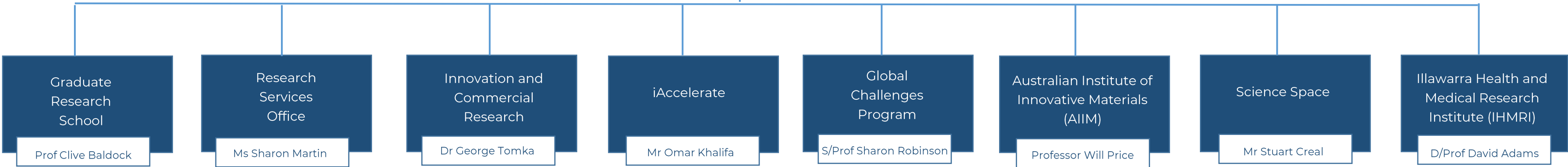


# Office of the Deputy Vice-Chancellor (Research and Innovation)

Organisational Chart (3 August 2020)



UNIVERSITY  
OF WOLLONGONG  
AUSTRALIA



**Graduate Research School**  
Prof Clive Baldock

- HDR candidature management
- HDR scholarships
- HDR data and IT Systems
- HDR policy & procedures
- HDR training
- HDR supervisory development
- HDR supervision
- HDR IP management
- HDR research misconduct

Administrative Support:  
Toni Bloor  
E: [tward@uow.edu.au](mailto:tward@uow.edu.au)  
T: 4221 4833

**Research Services Office**  
Ms Sharon Martin

- Research Strategy & Policy Development
- Research Grants & Fellowships
- Research Integrity, Ethics (Human & Animal), Biosafety & Export Controls
- Research Analytics, Systems and Support
- Research Promotions & Marketing
- Research Quality & Assessment (Global Rankings ERA & REI)
- Researcher training and development

Administrative Support:  
Karla House & Julie Evans  
E: [research-services@uow.edu.au](mailto:research-services@uow.edu.au)  
T: 4221 3386

**Innovation and Commercial Research**  
Dr George Tomka

- Industry / Business & UOW Researcher Engagement Facilitation
- Commercial Research Contracts, Tenders, Grants and CRCs
- Contract Research Consultancies
- Identification, protection and Commercialisation of Intellectual Property & Innovation

Administrative Support:  
Lisa King  
E: [lking@uow.edu.au](mailto:lking@uow.edu.au)  
T: 4221 5086

**iAccelerate**  
Mr Omar Khalifa

- Start Ideas Incubator
- Business acceleration program
- Entrepreneur networks
- Mentor programs
- Pitch programs
- Education programs
- \$10M Seed Fund

Administrative Support:  
Moira Buckley  
E: [mbuckley@uow.edu.au](mailto:mbuckley@uow.edu.au)  
T: 4239 2150

**Global Challenges Program**  
S/Prof Sharon Robinson

- Facilitates interdisciplinary research for impact
- Global Challenges:
  - Building Resilient Communities
  - Living Well, Longer
  - Making Future Industries
  - Sustaining Coastal & Marine Zones
- Oliver Ferrer Fund
- Support & mentoring for EMCRS to build diverse research teams
- Community and industry partnership development

Administrative Support:  
Liz Ragen  
E: [eragen@uow.edu.au](mailto:eragen@uow.edu.au)  
T: 4221 4261

**Australian Institute of Innovative Materials (AIIM)**  
Professor Will Price

- Multi-disciplinary, multi-functional materials research into commercial reality
- AIIM comprises of four research organisations
  - Intelligent Polymer Research Institute (IPRI)
  - ARC Centre of Excellence for Electromaterials Science (ACES)
  - Institute for Superconducting and Electronic Materials (ISEM)
  - University of Wollongong Electron Microscopy Centre (EMC)

Administrative Support:  
Narelle Badger  
E: [nbadger@uow.edu.au](mailto:nbadger@uow.edu.au)  
T: 4221 3530

**Science Space**  
Mr Stuart Creal

- NSW's only dedicated science centre
- Founded upon principles of education, hands-on learning and accessibility with a focus on STEM education
- Over 100 interactive exhibits, science shos and workshops
- NSW #1 Digitally Immersive Planetarium
- Dedicated STEM Zone with extensive STEM outreach, onsite and virtual programs.

Administrative Support:  
Stuart Creal  
E: [screal@uow.edu.au](mailto:screal@uow.edu.au)  
T: 4286 5036

**Illawarra Health and Medical Research Institute (IHMRI)**  
D/Prof David Adams

- Not for Profit Independent Medical Research Institute (MRI) that supports health and medical research in the Illawarra
- Translational approach to Research with local clinicians
- Clinical trials
- Investigates a range of diseases and illnesses under 3 research themes:
  - Diagnostics & Therapeutics
  - Mental Health & Ageing Brain
  - Chronic Conditions & Lifestyle

Administrative Support:  
Joanna Harrison  
E: [joannaha@uow.edu.au](mailto:joannaha@uow.edu.au)  
T: 4221 3871