

1975  
50  
2025

# UOW in Numbers



UNIVERSITY  
OF WOLLONGONG  
AUSTRALIA

2024



# Contents

---

**RANKINGS** 02

---

**STUDENT STATISTICS** 08

---

**STUDENT EXPERIENCE** 13

---

**STAFF** 15

---

**RESEARCH** 16

---

**FINANCIAL STATEMENT** 18

---

**COMMUNITY ENGAGEMENT** 20

---

**SOCIAL IMPACT** 22

---

# World rankings

## QUACQUARELLI SYMONDS (QS) WORLD UNIVERSITY RANKINGS

**=167**

World Ranking

### QS SUBJECT RANKINGS

#### Top 100

Mineral and Mining  
Engineering

Nursing

#### Top 150

Civil and Structural  
Engineering

Materials Sciences

Sports-related subjects

#### Top 200

Accounting and Finance

Archaeology

Business and  
Management Studies

Chemistry

Law and Legal Studies

Electrical and Electronic  
Engineering

Geology

Geography

Geophysics

Mechanical Engineering

### QS SUSTAINABILITY RANKING

**=98**

## TIMES HIGHER EDUCATION (THE) WORLD UNIVERSITY RANKINGS

**16**

Young University Ranking

**201-250**

World Ranking

### THE SUBJECT RANKINGS

#### Top 150

Education Studies

Engineering

Law

#### Top 200

Physical Sciences

Psychology

### WORLD UNIVERSITY IMPACT RANKING

**=44**

### OTHER MAJOR RANKINGS

**301-400**

World Rank  
Academic Ranking of  
World Universities

**198**

Aggregate Ranking of  
Top Universities

**5+ star**

QS rating

# National rankings

12

QS Australian University Ranking

=11

Times Higher Education Australian Ranking

16

Australian Academic Ranking of World Universities

=13

QS Australian Sustainability Ranking

9

Australian Times Higher Education Impact Ranking

=9

Australian Financial Review Best Universities Ranking

## GOOD UNIVERSITIES GUIDE 2024/2025

The Good Universities Guide provides independent 5 star performance ratings for every university in Australia. UOW was rated #1 university in NSW for Undergraduate Learning Resources and achieved a 5 star rating across a number of student indicators.

★★★★★  IN AUSTRALIA

### UNDERGRADUATE

#### Learner Engagement

Social Work

#### Learning Resources

Medicine

#### Overall Educational Experience

Social Work

#### Student Support

Agriculture & Environmental Studies

### POSTGRADUATE

#### Full Time Employment

Engineering & Technology  
Law & Paralegal Studies  
Psychology

#### Learner Engagement

Medicine

★★★★★  IN NSW

### UNDERGRADUATE

#### Learner Engagement

Communications  
Engineering & Technology  
Law & Paralegal Studies  
Psychology

#### Skills Development

Humanities, Culture & Social Sciences  
Psychology  
Social Work

#### Learning Resources

Agriculture & Environmental Studies  
Communications  
Health Services & Support  
Humanities, Culture & Social Services

#### Student Support

Communications  
Medicine

#### Teaching Quality

Business & Management  
Communications  
Law & Paralegal Studies  
Medicine

#### Overall Educational Experience

Communications  
Health Services & Support  
Law & Paralegal Studies



## UNDERGRADUATE

### Full Time Employment

Education & Training  
Social Work

### Learner Engagement

Humanities, Culture  
& Social Sciences  
Nursing

### Learning Resources

Creative Arts  
Education & Training  
Law & Paralegal Studies

### Overall Educational Experience

Education & Training  
Nursing

### Skills Development

Law & Paralegal Studies  
Nursing

### Student Support

Humanities, Culture  
& Social Sciences  
Nursing

### Teaching Quality

Education & Training  
Humanities, Culture  
& Social Sciences  
Nursing

## POSTGRADUATE

### Learner Engagement

Nursing  
Social Work

### Learning Resources

Social Work

### Overall Educational Experience

Education & Training

### Skills Development

Education & Training  
Medicine  
Social Work

### Student Support

Education & Training  
Nursing  
Social Work

### Teaching Quality

Education & Training  
Social Work

## QUALITY INDICATORS FOR LEARNING AND TEACHING

UOW continues to achieve outstanding results in several categories in the Federal Governments 2023 Quality Indicators for Learning and Teaching.

## UNDERGRADUATE

### Indicators

**1st in NSW**  
Learning Resources

### 2nd in NSW

Teaching Quality  
and Engagement  
Skills Development  
Student Support  
and Services

### 3rd in NSW

Quality of Educational  
Experience  
Peer Engagement

### Study Area

**1st in Australia**  
Communications  
Law and Paralegal Studies  
Teacher Education

### 3rd in Australia

Humanities, Culture and  
Social Sciences

### 1st in NSW

Humanities, Culture and  
Social Sciences

### 2nd in NSW

Engineering  
Health Services and Support  
Nursing  
Psychology

### 3rd in NSW

Creative Arts

## POSTGRADUATE

### Indicators

**3rd in NSW**  
Student Support and Services

### Study Area

**1st in NSW**  
Engineering

# Our student population



**35,076**

2023 total student enrolment

## COMMENCING STUDENTS

**14,680**

Total



**11,693**

Onshore



**2,987**

Offshore

## CONTINUING STUDENTS

**20,396**

Total



**15,669**

Onshore



**4,727**

Offshore

## DOMESTIC UNDERGRADUATE

### SOCIAL INCLUSION/PARTICIPATION RATE



**19.0%**

Students of low socio economic status



**3.6%**

Domestic students identifying as Aboriginal and/or Torres Strait Islander



**27.2%**

Students from regional and remote areas

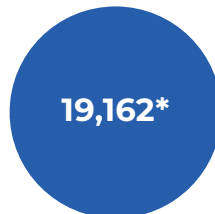


**10.5%**

Students with a disability

## STUDENT TYPE

### DOMESTIC



### INTERNATIONAL



**7,679**

Offshore



**8,235**

Onshore

\* Includes domestic students studying at offshore campuses

## GENDER

**17,296**

Male

**17,730**

Female

**50**

Unspecified

## ENROLMENTS



**23,809**

Undergraduate



**307**

Degrees offered



**8,952**

Postgraduate coursework



**1,396**

Higher degree research



**919**

Non-award

**Onshore** from 9 locations (Wollongong, Liverpool, Innovation Campus, Sydney CBD, Shoalhaven, Eurobodalla, Bega Valley, Sutherland, Southern Highlands)

**Offshore** from Malaysia, Singapore, Hong Kong, Dubai

**Online**

## UOW GLOBAL ENTERPRISES DEGREE, SUB-DEGREE, DIPLOMA, VOCATIONAL, FOUNDATION, LANGUAGE ENROLMENTS AND POSTGRADUATE QUALIFICATIONS\*

UOW College Australia enrolments	<b>2,779</b>
UOW College Hong Kong enrolments	<b>2,380</b>
University of Wollongong in Dubai enrolments	<b>4,655</b>
UOW Malaysia enrolments	<b>5,528</b>

\*These UOW Global Enterprises enrolments are non-UOW accredited and therefore excluded from other statistical breakdowns that appear within this publication.

## DOMESTIC ENROLMENTS BY HOME REGION

Illawarra	<b>8,009</b>	Northern Sydney	<b>439</b>
Southern Sydney	<b>3,180</b>	ACT	<b>418</b>
Other NSW	<b>2,581</b>	Central Sydney	<b>356</b>
South Western Sydney	<b>2,133</b>	Inner Western Sydney	<b>117</b>
Interstate	<b>962</b>	Overseas	<b>104</b>
Western Sydney	<b>863</b>		

## ONSHORE ENROLMENTS BY FACULTY

Faculty of the Arts, Social Sciences and Humanities	<b>8,488</b>
Faculty of Business and Law	<b>6,144</b>
Faculty of Engineering and Information Sciences	<b>5,780</b>
Faculty of Science, Medicine and Health	<b>5,450</b>
Enabling enrolments delivered through UOW College	<b>816</b>
Non-faculty enrolments	<b>684</b>

## DEGREE COMPLETIONS BY YEAR

2023	<b>7,289</b>
2022	<b>7,318</b>
2021	<b>8,468</b>
2020	<b>8,342</b>
2019	<b>7,795</b>
2018	<b>7,711</b>
2017	<b>7,227</b>
2016	<b>7,050</b>
2015	<b>6,687</b>
2014	<b>7,465</b>

## UOW ALUMNI



# 191,512

Cumulative number of alumni



# 207

Different countries that our alumni originate from



# 171

Different countries that are home to our alumni



# Global reach

STUDENT STATISTICS

## INTERNATIONAL ENROLMENTS BY REGION

Southern & Central Asia	<b>7,252</b>	Americas	<b>379</b>
South East Asia	<b>3,452</b>	North West Europe	<b>355</b>
North East Asia	<b>2,047</b>	Southern & Eastern Europe	<b>347</b>
North Africa & Middle East	<b>1,740</b>	Sub-Saharan Africa	<b>303</b>
		Oceania & Antarctica	<b>39</b>

## WHERE UOW STUDENTS STUDY

### ONSHORE



Wollongong  
**22,912**

● UOW Online  
**1,832**

● Metropolitan & regional campuses  
**2,618**

### OFFSHORE

● Dubai  
**4,507**

● Other offshore campuses  
**3,207**

## STUDENT MOBILITY



**549**

Outbound domestic students

**23**

Outbound international students

**567**

Inbound international students

# Student surveys

## SECTOR-WIDE SURVEYS



**79.3%**

Undergraduate Overall Educational Experience (compared to the national average of 76.3%)

\*ComparED Dec 2024



**87.2%**

Undergraduate Learning Resources (compared to the national average of 83.7%)

\*ComparED Dec 2024



**82.8%**

Undergraduate Teaching Quality (compared to the national average of 80.4%)

\*ComparED Dec 2023

# Engagement & employability

## SECONDARY SCHOOL ENGAGEMENT



**406**

Secondary schools engaged



**2,618**

Number of parents of school leavers engaged



**19,134**

Number of secondary school students engaged in UOW communications and activities

STUDENT EXPERIENCE



## TRANSITION, RETENTION AND PEER PROGRAMS



**905**

Participants in Peer Assisted Learning (PAL) supported subjects



**1,486**

Participants in Peer Academic Coaching activity



**2,823**

PAL contact hours



**1,282**

Participants in Retention program



**7,464**

Participants in Orientation program

STUDENT EXPERIENCE

## GRADUATE EMPLOYMENT

**87.7%**

UOW domestic undergraduates in employment

\*Graduate Outcomes Survey 2022 - 2024



## Staff mix

	FTE	Headcount
Academic staff	991	1,130
Professional Services staff	1,329	1,456
<b>Total</b>	<b>2,320</b>	<b>2,586</b>

\*2023 government reported figures as at 31 March 2023

**38.6%** Female Professors



**88.0%** Academic staff with PhDs



STAFF



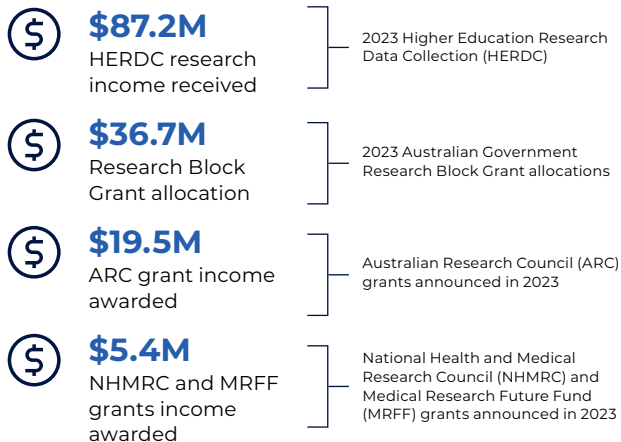
**14**

Distinguished Professors

- Distinguished Prof David Adams
- Distinguished Prof Noel Cressie
- Distinguished Prof Xu-Feng Huang
- Distinguished Prof Zhengyi Jiang
- Distinguished Prof Stuart Kaye
- Distinguished Prof Tony Okely
- Distinguished Prof Richard (Bert) Roberts
- Distinguished Prof Sharon Robinson
- Distinguished Prof Anatoly Rozenfeld
- Distinguished Prof Aidan Sims
- Distinguished Prof Willy Susilo
- Distinguished Prof Gordon Wallace
- Distinguished Prof Xiaolin Wang
- Distinguished Prof Shujun Zhang

# Research

## RESEARCH INCOME



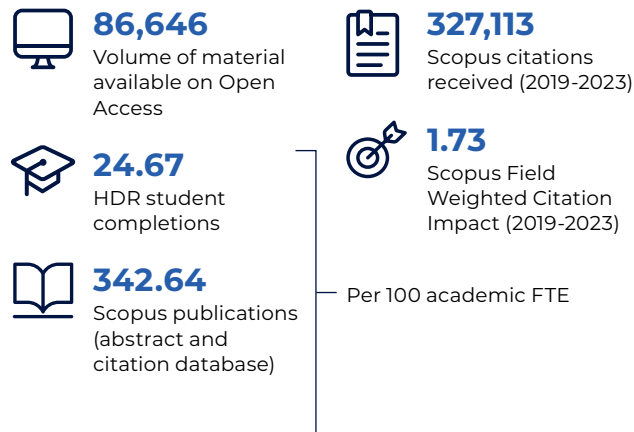
## MAJOR RESEARCH ENTITIES

- Australian Institute for Innovative Materials (AIIM)
- Early Start
- SMART Infrastructure Facility
- Sustainable Buildings Research Centre (SBRC)
- Australasian Health Outcomes Consortium (AHOC)

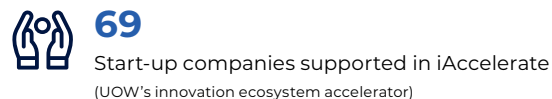
## UNIVERSITY RESEARCH INSTITUTES

- Molecular Horizons
- Australian National Centre for Ocean Resources & Security (ANCORS)

## RESEARCH EXCELLENCE & IMPACT



## ENTREPRENEURSHIP AND INNOVATION



# Financial statement

SOURCE:  
UOW ANNUAL  
REPORT 2023

	Consolidated*		Parent^	
	\$'000 2023	\$'000 2022	\$'000 2023	\$'000 2022
<b>OPERATING REVENUE</b>				
Australian Govt grants/HECS	276,861	275,068	276,861	272,658
International student fees	259,236	199,714	146,937	102,861
Research grants	73,852	68,045	73,852	68,045
Research other	46,031	33,233	46,031	33,233
Capital grants	440	564	440	564
Other	164,259	190,738	152,990	239,053
<b>Total Operating Revenue</b>	<b>820,679</b>	<b>767,362</b>	<b>697,111</b>	<b>716,414</b>

<b>OPERATING EXPENSES</b>				
Salaries	505,898	453,325	423,308	376,076
Non salaries	409,853	342,440	312,892	293,238
	<b>915,751</b>	<b>795,765</b>	<b>736,200</b>	<b>669,314</b>
Operating result	-95,072	-28,403	-39,089	47,100
Operating margin	-11.6%	-3.7%	-5.6%	6.6%

<b>SUMMARY STATEMENT OF FINANCIAL POSITION</b>				
Total assets	2,018,780	2,133,638	1,724,663	1,784,286
Total liabilities	1,206,994	1,223,535	1,084,500	1,104,885
<b>Net Assets</b>	<b>811,786</b>	<b>910,103</b>	<b>640,163</b>	<b>679,401</b>

\* UOW figures including figures from UOW's controlled entities (UOW Global Enterprises, UOW Pulse).

^ UOW figures only

# Community engagement

## UOW PULSE SPORTS AND FITNESS VISITORS

Recreation and Aquatic Centre	210,659
Sports Hub	58,708
Outdoor sporting grounds	224,072
Uni Active Innovation Campus	72,386
Total visitors	565,825

## UOW SCIENCE SPACE 2023

School students (physical excursions and workshops)	16,859
School students (virtual excursions and workshops)	90
Outreach excursions	1,375
Public/community	43,019
Other activities (holiday workshops, family and adult science events)	6,329
Groups (vacation care, seniors, Scouts)	2,837
Total number of physical visitors 2023	70,509

## EARLY START DISCOVERY SPACE 2023

Membership visits	83,470
General public visits	45,862
Groups and other activities	3,350
Total number of physical visitors	132,682

## EARLY START ENGAGEMENT CENTRES

Number of engagement centres covering regional and remote NSW/ACT	51
Number of podcast episodes generated for community	10
Number of Early Start research seminars delivered to community	7
Number of international visitors to Early Start	5
Number of national visitors to Early Start	20
Number of visitors to Children's Technology Play Space	197

# Social impact

**100+**

different types of paid and volunteer roles through UOWx

**2,400+**

students claim their co-curricular involvement each year

**UOWx**  
Be extraordinary

The University of Wollongong is a global leader in discovery and learning, working to transform people and the world we live in.

We have built a reputation as an enterprising institution with a multi-disciplinary approach to research, underpinned by strong industry partnerships and personalised style. Originally established as a provider of technical education required for the region's steel industry, the University now offers a wide range of courses across four faculties.

## CAMPUSES

- Bega Valley
- Eurobodalla
- Innovation Campus, Wollongong
- Liverpool
- Shoalhaven
- Southern Highlands
- Sutherland
- Sydney CBD
- Wollongong

## FACULTIES

- Arts, Social Sciences and Humanities
- Business and Law
- Engineering and Information Sciences
- Science, Medicine and Health

## WHOLLY OWNED SUBSIDIARY CAMPUSES

- University of Wollongong in Dubai
- UOW India
- UOW College Hong Kong
- UOW Malaysia
- UOW College Australia



## HISTORY

- 1951** Established as a Division of the then NSW University of Technology
- 1961** The Division became the Wollongong College of the University of NSW
- 1975** Incorporated by NSW Parliament as an independent institution
- 1982** Amalgamated with Wollongong Institute of Higher Education, sparking a period of rapid growth
- 1993** UOW in Dubai established
- 2008** Innovation Campus opens
- 2017** UOW College Hong Kong launches  
UOW Liverpool campus opens
- 2018** UOW Malaysia KDU established
- 2022** UOW in Dubai opens 'campus of the future' in Dubai's Knowledge Park
- 2023** UOW in Dubai celebrated 30 years
- 2024** UOW India in Gujarat's GIFT City officially launched and opened its door to students

# Celebrating 50 years of impact

The University of Wollongong was born 50 years ago with a mission to transform our region and to educate and empower the people of the Illawarra. Our commitment to a better future has shaped our direction since our inception. Ranked in the top 1 per cent of universities worldwide, we have become globally recognised for the impact of our research, the strength of our teaching and the quality of our graduates. As we celebrate the accomplishments of the past five decades, we remain focused on delivering a more sustainable and equitable future for all.



UNIVERSITY  
OF WOLLONGONG  
AUSTRALIA

# UOW IN NUMBERS

[uow.edu.au/about](https://uow.edu.au/about)



UNIVERSITY  
OF WOLLONGONG  
AUSTRALIA

Content compiled by the Data & Analytics Division.

The University of Wollongong attempts to ensure the information contained in this publication is correct at the time of production (January 2025); however, sections may be amended without notice by the University in response to changing circumstances or for any other reason. Check with the University for any updated information. University of Wollongong CRICOS: 00102E, TEQSA Provider ID: PRV12062, ABN: 61 060 567 686.