

# EVACUATION DIAGRAM



## STANDARD FIRE ORDERS

ACTIONS TO BE CONSIDERED ON DISCOVERING A FIRE

- R** "RESCUE" any person/s in immediate danger.
- A** "ALARM" Raise the alarm. Contact the Emergency Services on 0 000. Contact University Security on extension 4900. Activate Break Glass Alarm.
- C** "CONTAIN" Close doors to contain fire.
- E** "EXTINGUISH" Attempt to extinguish the fire only if you are trained and it is safe to do so.

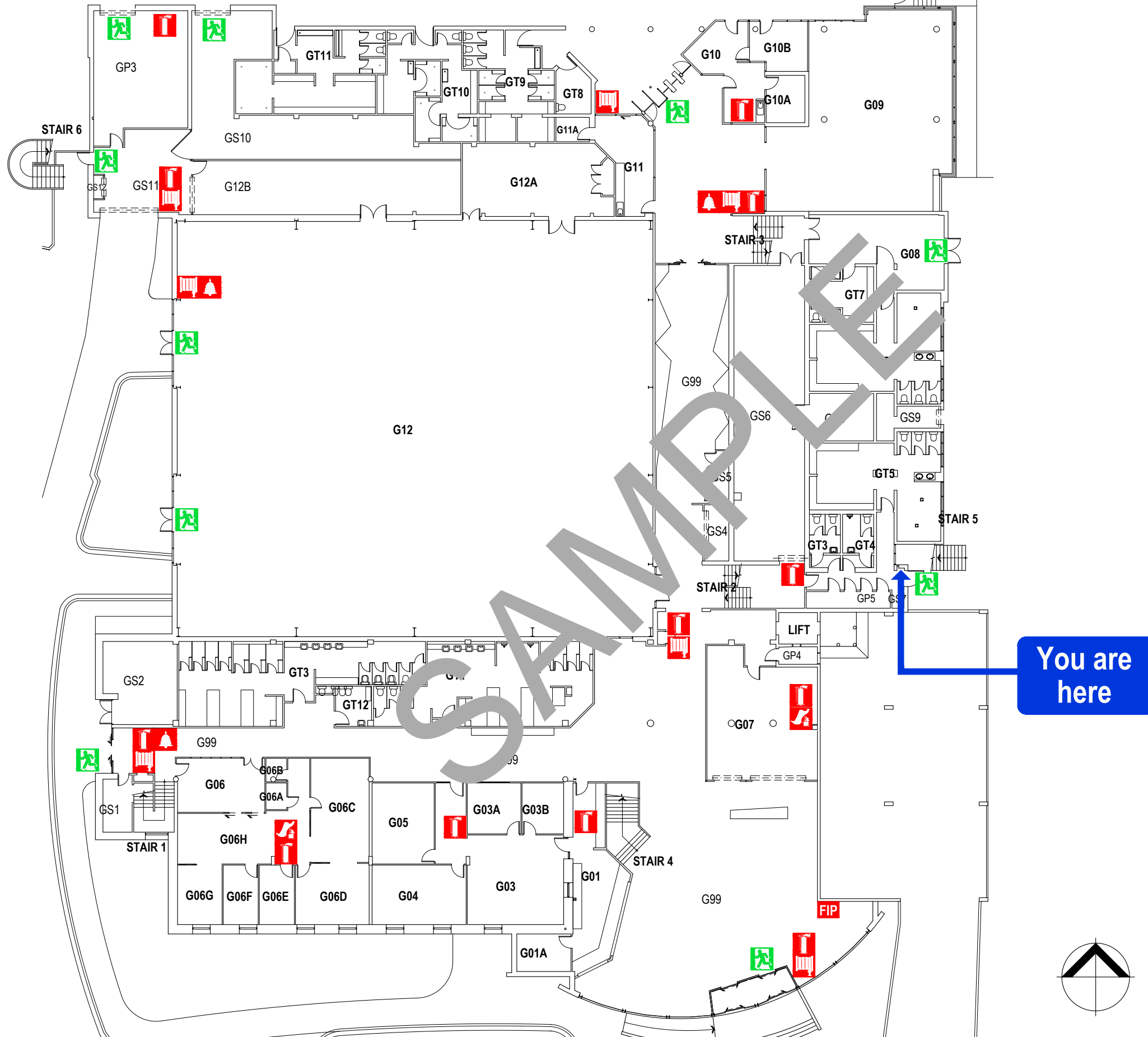
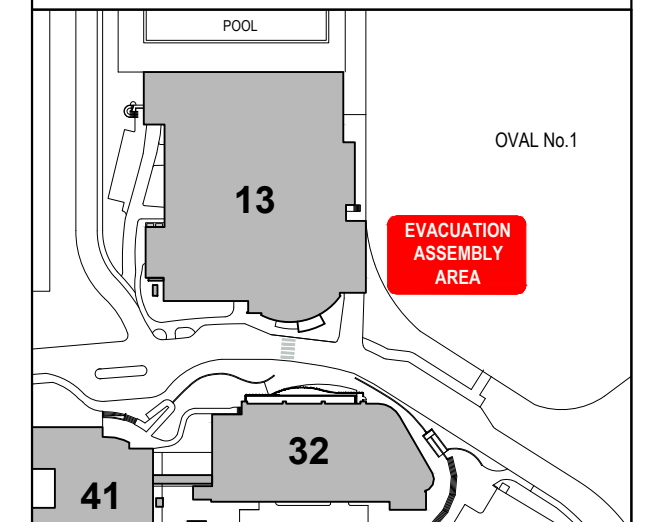
Follow the directions of the Building Warden

## EMERGENCY EVACUATION PROCEDURES

If you are instructed to evacuate the building either via an automated alarm, Building Warden or member of staff you must:

- leave the building immediately by the nearest exit;
- proceed, to the assembly area indicated in the site map below;
- remain in the assembly area until advised the emergency is over;
- do not re-enter the building until advised it is safe to do so by the Building Warden or Security Staff.

## ASSEMBLY AREA



**LEGEND**

- EXIT
- FIRE EXTINGUISHER
- FIRE HOSE REEL
- FIRE HYDRANT
- BREAK GLASS ALARM
- FIRE INDICATOR PANEL
- FIRE HOSE REEL AND HYDRANT
- FIRE BLANKET