

Roof Safety Survey

GENERAL INFORMATION

CAMPUS: Innovation Campus
BUILDING: Solar Decathlon House
DESCRIPTION:

Single story house

RISK ASSESSMENT #:

ROOF ACCESS:

No fixed access in place
 Nil

SIGNAGE:

COMPLIANCE PLATES:

Nil

MARKED SAFE AREAS:

Nil

ROOFING SYSTEM:

Standard residential roof

HEIGHT OF BUILDING:

Single story

PITCH:

25-30 and 30-35

ROOF CONSTRUCTION:

Rafter and Batten

STRUCTURAL INTEGRITY:

Sound

VEGETATION:

None

ADJOINING ROOFES:

Isolated building

SERVICES:

Gutters	Y
A/C Units	N
Exhaust Fans	N
Ducts	N
Roof Ventilators	N
Fume Cupboards	N
Telco Towers	N

Satellite Dishes	N
Antenna	U
Skylights Domes	N
Glass Skylights	N
Pipework	N
Cooling Tower	N

EXISTING SAFETY ITEMS:

Horizontal Lifelines	N
Anchor Points	N
Vertical Lifelines	N

Handrail	N
Walkway	N
Parapets	N

WORK ACTIVITY DETAILS:

Clean Gutters / Routine Maintenance	Y
Service A/C Plant	N
Fume Cupboards	N

Frequency

Resolved FM

Note: Before commencing any work obtain Roof Permit from Facilities Management Division

Roof Safety Survey

RISK ASSESSMENT

Risk Assessment / Task Location

SOLAR DECATHALON HOUSE

Note: The hazards identified do not include hazards that related to specific work tasks. These should be identified in the Safe Work Method Statement (SWMS) of the contractor.

Hazard Identification		Risk Assessment & Control Measures		Risk Control
What is the Activity/Service Item	What are the potential Hazards	What is the Risk Level	List any Control Measures already Implemented	Describe what can be done to eliminate risk or reduce the harm
Access to Roof	Unauthorised access	M	No official point of access. Access would need to be via ladder.	Access point to be installed
Gutter Maintenance on Roof and Awnings	Falling	H	Nil	Installation of fall arrest devices.
Antenna/Weatherstation Maintenance	Falling and Refer to SWMS of contractor	H	Nil	Installation of fall arrest devices.
General roof access	Trip Hazard - Roof Sheeting	M	Nil	No general access permitted.

Reference Documentation

Legislation

NSW Work Health and Safety Regulation 2011 Part 4.4 Falls

Public Health (Microbial Control) Regulation 2000

Australian Standards

AS 1657-2013 Fixed platforms, walkways, stairways and ladders - Design, construction and installation

AS 1891.1 - 2007 : Industrial fall-arrest systems and devices - Harnesses and ancillary equipment

AS 1891.2 - 2001 : Industrial fall-arrest systems and devices - Horizontal lifeline and rail systems

AS 1891.3 - 1997 : Industrial fall-arrest systems and devices - Fall-arrest devices

AS 1891.4 - 2009 : Industrial fall-arrest systems and devices - Selection, use and maintenance

AS 2210.1 - 2010 : Safety, protective and occupational footwear - Guide to selection, care and use

AS 2243.8 - 2006 : Safety in Laboratories - Fume Cupboards

AS 2243.9 - 2009 : Safety in Laboratories - Recirculating Fume Cabinets

AS 3666- 2011 : Air-handling & Water Systems for Buildings - Microbial Control

AS 4994.1 - 2009 : Temporary edge protection - General requirements

AS 4994.2 - 2009 : Temporary edge protection - Roof edge protection - Installation and dismantling

AS 5532 - 2013 Manufacturing requirements for single-point anchor device used for harness-based work at height

Code of Practice

Safe Work Australia - Managing the Risk of Falls at Workplaces

NSW Health Department Code of Practice for the Control of Legionnaires' Disease

UOW Documentation

Working at Heights Guidelines

Thermal Comfort Guidelines

UOW Roof Access Permit

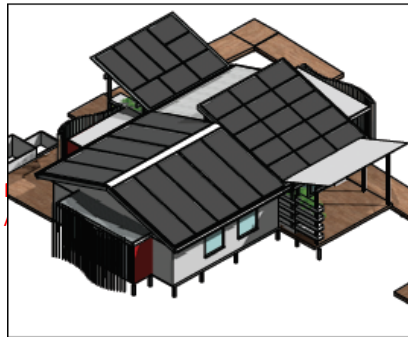
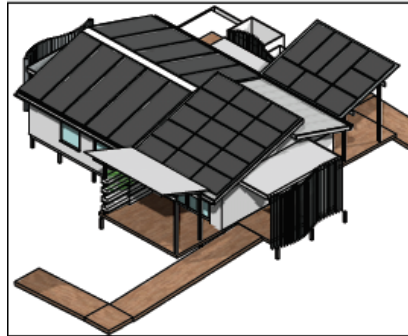
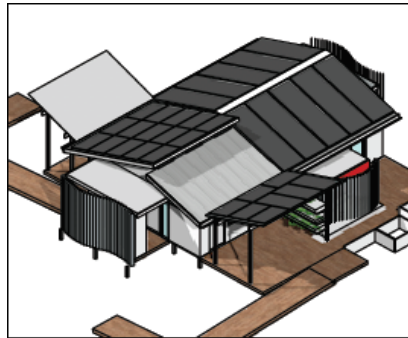
UOW Roof Access Certificate

Other

SALA - Fall Arrest and Height Safety Systems - Fall Protection Manual

WorkCover - Safe Working at Heights Guide 2006

Aerial image



Campus Map

