

# Roof Safety Survey

## GENERAL INFORMATION

**CAMPUS:** Innovation Campus  
**BUILDING:** 233 - ITAMS  
**DESCRIPTION:** Modern 3 story concrete building with two storeys on the western side.  
**RISK ASSESSMENT # :** UOW02017  
**ROOF ACCESS:** Multiple access points to main building and ladder access to theatre roof  
 1) Second floor roof Access from the second floor plantroom (2P4) to the aircondition services on the landing on the western side of the building  
 2) Second floor roof (upper) Ladder and locked access hatch in the second floor plant room  
 3) Third floor roof Ladder and locked access hatch in the Third floor Cleaners room (3C1)  
 4) Theatre roof Ladder bracket on western wall  
**SIGNAGE:** Nil  
**COMPLIANCE PLATES:** Plates located on the ladders/hatch. Unknown if tags are on the anchor points on the theatre.  
**SAFE WORK AREA:** Within the barriers around the airconditioning services area on western side of building  
**ROOFING SYSTEM:** TYPICAL ANCHORS  
 Sala Ladsafe Lifeline  
**HEIGHT OF BUILDING:** 3 storeys eastern wing, 2 storeys western wing and theatre  
**PITCH:** Flat over concrete, 10 degrees pitch over plantroom and theatre  
**ROOF CONSTRUCTION:** Concrete with metal over plantroom and theatre  
**STRUCTURAL INTEGRITY:** Sound

**VEGETATION:** Nil

**ADJOINING ROOFES:** Nil

<b>SERVICES:</b>	Gutters	Yes	Satellite Dishes	Yes
	A/C Units	Yes	Antenna	Yes
	Exhaust Fans	Yes	Skylights Domes	No
	Ducts	No	Glass Skylights	No
	Roof Ventilators	No	Pipework	Yes

<b>EXISTING SAFETY ITEMS:</b>	Horizontal Lifelines	No	Handrail	No
	Anchor Points	Yes	Walkway	No
	Vertical Lifelines	No	Parapets	Yes 1050mm

<b>WORK ACTIVITY DETAILS:</b>	Routine Gutter Maintenance	Yes	<b>Frequency</b>	Every six months
	Service A/C Plant			Every three months
	Window cleaning			Every six months

**Note:** Before commencing any work obtain Roof Permit from Resolve FM

# Roof Safety Survey

## RISK ASSESSMENT

Risk Assessment / Task Location

Building 233

Note: The hazards identified do not include hazards that related to specific work tasks. These should be identified in the Safe Work Method Statement (SWMS) of the contractor.

Hazard Identification		Risk Assessment & Control Measures		Risk Control
What is the Activity/Service Item	What are the potential Hazards	What is the Risk Level	List any Control Measures already Implemented	Describe what can be done to eliminate risk or reduce the harm
Access to Roof via Plantroom	Unauthorised Access	Medium	Swipe access required, area locked	Signage
Access to upper roofs via ladder and hatch	Unauthorised Access	High	Swipe access required, area locked	Compliance plates need updating
A/C Maintenance	Refer to SWMS of contractor	Negligible	A/C Units are situated in enclosed area off plant room	Ensure SWP developed is followed by Contractors
Air Conditioning Maintenance	Atmospheric contaminants; Legionnaires Disease from A/C Units	Medium	Regular inspection and cleaning of Air filters; intakes and exhausts; ductwork and cooling towers	Continuing Maintenance
Cleaning of Gutters on Concrete Roof	Trip Hazard & Falling	Medium	Fall restraints installed	Ensure SWP developed is followed by Contractors
Antenna Maintenance	Falling and Refer to SWMS of contractor	High	Anchor points installed	Ensure SWMS developed is followed by Contractors
Antenna Maintenance	RF hazard	High	Refer to RF website: <a href="http://www.rfnsa.com.au/nsa/index.cgi">www.rfnsa.com.au/nsa/index.cgi</a>	Adequate signage required and demarkation
General	Trip Hazard - Roof Sheeting	Medium	Safe Work Procedure	Walkway or minimum awareness in Safe Work Procedure
General	Trip Hazard - Horizontal Lifeline or Anchor Points	Medium	Signage & System is visible	Be aware of location of horizontal lifeline & anchor points
General	Weather Trips/Slips - Wet Roofs	High	Safe Work Procedure, do not work on wet roof	Do not work while roofs are wet or have dew
General	Weather - Windy Condition	High	Safe Work Procedure, do not work in high wind conditions	Do not work in windy conditions
General	Weather - Hot Conditions	Medium	Thermal Comfort Guidelines	Use suncream, hats and remain hydrated and take appropriate breaks
General	Climbing ladder	Medium	Maintain 3 points of contact; Signage; and Working at Heights Guidelines - Working from Ladders	Ensure that ladder is used correctly

## **Reference Documentation**

### **Legislation**

NSW Work Health and Safety Regulation 2011 Part 4.4 Falls  
Public Health (Microbial Control) Regulation 2000

### **Australian Standards**

AS 1657 - 2013 : Fixed platforms, walkways, stairways and ladders - Design, construction and installation  
AS 1891.1 - 2007 : Industrial fall-arrest systems and devices - Harnesses and ancillary equipment  
AS 1891.2 - 2001 : Industrial fall-arrest systems and devices - Horizontal lifeline and rail systems  
AS 1891.3 - 1997 : Industrial fall-arrest systems and devices - Fall-arrest devices  
AS 1891.4 - 2009 : Industrial fall-arrest systems and devices - Selection, use and maintenance  
AS 2210.1 - 2010 : Safety, protective and occupational footwear - Guide to selection, care and use  
AS 3666- 2011 : Air-handling & Water Systems for Buildings - Microbial Control

### **Code of Practice**

WorkCover - Safe Work on Roofs. Part 1 - Commercial and industrial buildings  
NSW Health Department Code of Practice for the Control of Legionnaires' Disease

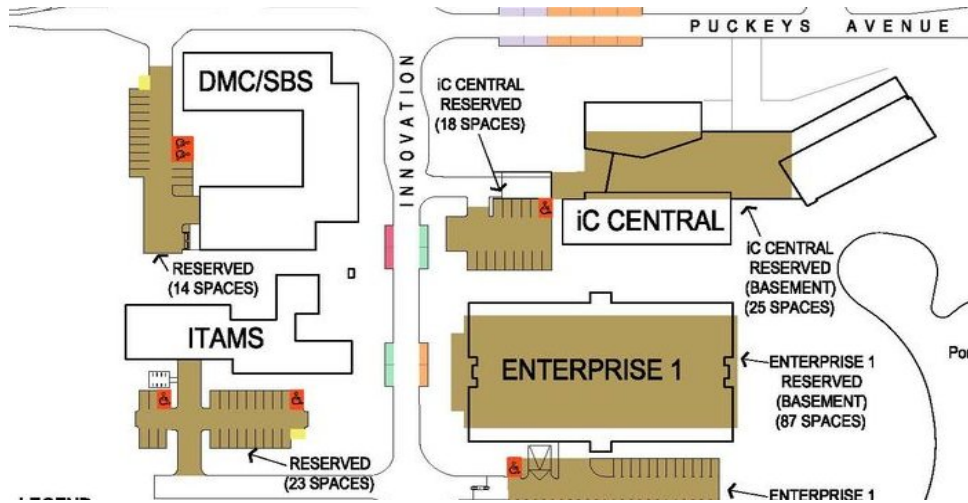
### **UOW Documentation**

Working at Heights Guidelines  
Thermal Comfort Guidelines  
UOW Roof Access Permit

### **Other**

WorkCover - Safe Working at Heights Guide 2006  
MCF Fact Sheets - Working safely around Radiofrequency (RF) Transmitters  
Radio Frequency National Site Archive - <http://www.rfnsa.com.au/nsa/index.cgi>

Building 233 Roof Safety Assessment



A - location of roof access point  
 L - location of ladder

P - location of compliance plate  
 Safe Roof Work Area



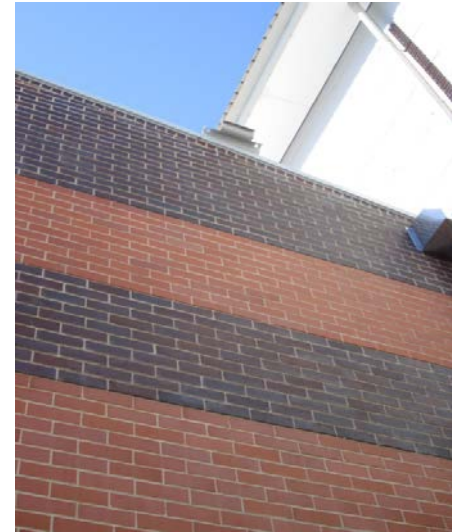
Building 233 Roof Safety Assessment



ITAMS Building and Theatre



Ladder from cleaners room to Eastern roof



Ladder bracket to theatre roof



Ladder in plantroom to Western roof



Ladder from cleaners room to Eastern roof



Satellite dish

Building 233 Roof Safety Assessment



View of ITAMS from Ic Enterprise 1



Roof over plantroom



Roof of Theatre



Airconditioning service area