

Roof Safety Survey

GENERAL INFORMATION

CAMPUS: Wollongong Campus
BUILDING: Biology Research Support Facility (5)
 Single storey metal roof building with walkway up to service area in centre of roof. Handrail on landing, but no anchor points or lifelines installed. Two skylight domes on northern side.
DESCRIPTION:
RISK ASSESSMENT #: UOW01604
ROOF ACCESS: Portable ladder to ladder attachment on landing.
SIGNAGE: Caution Low Headroom; Caution Trip Hazard
COMPLIANCE PLATES: Nil

MARKED SAFE AREA: Walkway to enclosed services area in centre of roof - Beware trip hazards
ROOFING SYSTEM: NA

HEIGHT OF BUILDING: 1 storey
PITCH: < 5 degrees
ROOF CONSTRUCTION: Metal
STRUCTURAL INTEGRITY: Sound

VEGETATION: Yes

ADJOINING ROOFES: Nil

SERVICES:

Gutters	Yes
A/C Units	Yes
Exhaust Fans	Yes
Ducts	No
Roof Ventilators	No
Fume Cupboards	Yes
Telco Towers	No

Satellite Dishes	No
Antenna	No
Skylights Domes	Yes
Glass Skylights	Yes
Pipework	Yes
Cooling Tower	No

EXISTING SAFETY ITEMS:

Horizontal Lifelines	No
Anchor Points	No
Vertical Lifelines	No

Handrail	No
Walkway	Yes
Parapets	No

WORK ACTIVITY DETAILS:

Clean Gutters / Routine Maintenance	Yes
Service A/C Plant	Yes
Fume Cupboards	Yes

Frequency

Every 6 weeks
Monthly
Every six months

Note: Before commencing any work obtain Roof Permit from Facilities Management Division

Roof Safety Survey

RISK ASSESSMENT

Risk Assessment / Task Location

BUILDING 5

Note: The hazards identified do not include hazards that related to specific work tasks. These should be identified in the Safe Work Method Statement (SWMS) of the contractor.

Hazard Identification		Risk Assessment & Control Measures		Risk Control
What is the Activity/Service Item	What are the potential Hazards	What is the Risk Level	List any Control Measures already Implemented	Describe what can be done to eliminate risk or reduce the harm
Access to Roof	Temporary Ladder - Falling	M	Small platform for securing ladder. Maintain 3 points of connection and secure ladder at top and bottom	Maintain 3 points of connection and secure ladder at top and bottom
Access to Roof	Unauthorised access	M	All access points to roof are locked and made secure so are not accessible by unauthorised persons; signage	Risk Assessment and Roof Safety Survey
Access to Roof	No fall protection from access point	M	Unprotected walkway	Installation of handrail from access point to safe area
Access to Upper Roof	Falling and Personal Injury	H	Temporary ladder	A short permanent ladder to safely access upper roof
Working near Skylights	Falling near or through skylight	H	Nil	Protective gridmesh, handrail, or a minimum of signage
Gutter Maintenance	Falling	H	Nil	Work Platform, Handrail, Horizontal Lifeline, or a minimum of anchor points
Air Conditioning Maintenance	Refer to SWMS of contractor	L	Currently not near a roof edge	Ensure they stay in safe area or a minimum of an anchor point may be required
Air Conditioning Maintenance	Atmospheric contaminants; Legionnaires Disease from A/C Units	M	Regular inspection and cleaning of Air filters; intakes and exhausts; ductwork and cooling towers	Continuing Maintenance
Exhaust Fan & Vents Maintenance	Refer to SWMS of contractor	L	Currently not near a roof edge	Ensure they stay in safe area or a minimum of an anchor point may be required
Fume Cupboard Inspection	Falling	H	Nil	Handrail, Horizontal Lifeline, or a minimum of anchor points
General	Trip Hazard - Roof Sheeting	M	Safe Work Procedure	Stay on walkways where installed
General	Trip Hazard - Fume Cupboard Braces	M	Safe Work Procedure	Be aware of bracing
General	Trip Hazard - Overhanging Trees	M	Maintenance	Cut down overhanging branches or a minimum be aware of branches
General	Environmental Hazards - Spiders, Wasps, and other insects	M	Appropriate PPE and insect repellent; Pest control as required	On-going pest control measures
General	Weather Trips/Slips - Wet Roofs	H	Safe Work Procedure	Do not work while roofs are wet or have dew
General	Weather - Windy Condition	H	Safe Work Procedure	Do not work in windy conditions
General	Weather - Hot Conditions	M	Thermal Comfort Guidelines	Use sunscreen, hats and remain hydrated and take appropriate breaks

Reference Documentation

Legislation

NSW Work Health and Safety Regulation 2011 Part 4.4 Falls

Public Health (Microbial Control) Regulation 2000

Australian Standards

AS 1657 - 2013 : Fixed platforms, walkways, stairways and ladders - Design, construction and installation

AS 1891.1 - 2007 : Industrial fall-arrest systems and devices - Harnesses and ancillary equipment

AS 1891.2 - 2001 : Industrial fall-arrest systems and devices - Horizontal lifeline and rail systems

AS 1891.3 - 1997 : Industrial fall-arrest systems and devices - Fall-arrest devices

AS 1891.4 - 2009 : Industrial fall-arrest systems and devices - Selection, use and maintenance

AS 1892.5 - 2000 : Portable ladders - Selection, safe use and care

AS 2210.1 - 2010 : Safety, protective and occupational footwear - Guide to selection, care and use

AS 2243.8 - 2006 : Safety in Laboratories - Fume Cupboards

AS 2243.9 - 2009 : Safety in Laboratories - Recirculating Fume Cabinets

AS 3666- 2011 : Air-handling & Water Systems for Buildings - Microbial Control

AS 4994.1 - 2009 : Temporary edge protection - General requirements

AS 4994.2 - 2009 : Temporary edge protection - Roof edge protection - Installation and dismantling

AS 5532 - 2013 : Manufacturing requirements for single-point anchor device used for harness-based work at height

Code of Practice

Safe Work Australia - Managing the Risk of Falls at Workplaces

NSW Health Department Code of Practice for the Control of Legionnaires' Disease

UOW Documentation

Working at Heights Guidelines

Thermal Comfort Guidelines

UOW Roof Access Permit

UOW Roof Access Certificate

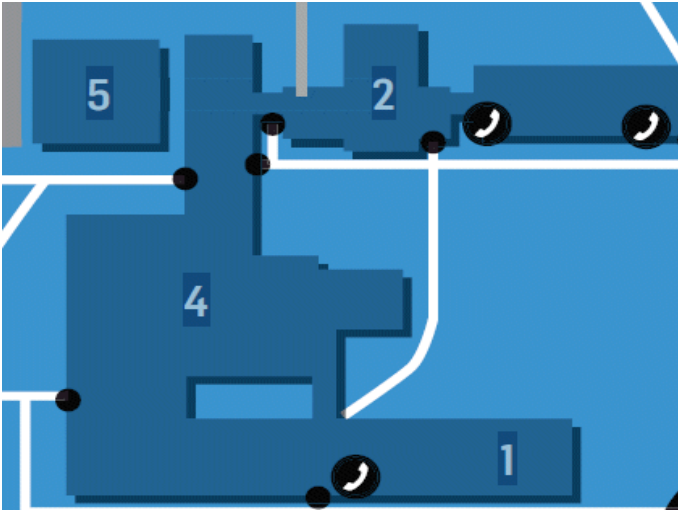
Other

[SALA - Fall Arrest and Height Safety Systems - Fall Protection Manual](#)

WorkCover - Safe Working at Heights Guide 2006

WorkCover Safety Guide - Portable Ladders February 1999

Building 5 Roof Safety Assessment



Campus Map



Google Image



Aerial Photograph



A - location of access to roof (ladder bracket) _____ Safe Roof Work Area

Building 5 Roof Safety Assessment



Northern aspect



Western aspect



Temporary ladder access to roof



Walkway to services



Enclosed services area



Looking north towards skylights



Access landing



View from Building 6

Building 5 Roof Safety Assessment



B5 roof access ladder bracket