

Roof Safety Survey

GENERAL INFORMATION

CAMPUS: Wollongong Campus
BUILDING: Materials Engineering (1)
DESCRIPTION: Two storey low pitched metal roof with flat raised enclosed central services area containing air conditioning unit, and fume cupboard vents. Exit through gate down to walkway via horizontal lifelines to access Building 4 roof (via Highbay Workshop or covered passageway).
RISK ASSESSMENT #: UOW01588
ROOF ACCESS: Access from Plantroom (S2 on Level 2) - there is a 5 metre high ladder stair up to a landing - access onto roof through door onto enclosed services walkway area. Access to roof proper through gate to the left of access door to plantroom.
SIGNAGE: Nil
COMPLIANCE PLATES: Located on gate beside access door from plant - 1 continuous Horizontal lifeline around building perimeter
MARKED SAFE AREAS: Enclosed landing in middle of building that is immediately accessed from the roof Access door
ROOFING SYSTEM: SALA "SAYFGLIDA & SAYF8" LIFELINE.
HEIGHT OF BUILDING: 2 storey
PITCH: < 5 degrees
ROOF CONSTRUCTION: Metal
STRUCTURAL INTEGRITY: Sound
VEGETATION: Yes
ADJOINING ROOFES: Engineering (4)

SERVICES:

| | |
|------------------|-----|
| Gutters | Yes |
| A/C Units | Yes |
| Exhaust Fans | Yes |
| Ducts | No |
| Roof Ventilators | No |
| Fume Cupboards | Yes |
| Telco Towers | No |

| | |
|------------------|-----|
| Satellite Dishes | No |
| Antenna | No |
| Skylights Domes | NA |
| Glass Skylights | NA |
| Pipework | Yes |
| Cooling Tower | No |

EXISTING SAFETY ITEMS:

| | |
|----------------------|-----|
| Horizontal Lifelines | Yes |
| Anchor Points | No |
| Vertical Lifelines | No |

| | |
|----------|-----|
| Handrail | No |
| Walkway | Yes |
| Parapets | No |

WORK ACTIVITY DETAILS:

| | |
|-------------------------------------|-----|
| Clean Gutters / Routine Maintenance | Yes |
| Service A/C Plant | Yes |
| Fume Cupboards | 1 |

Frequency

| |
|----------------|
| Every 10 weeks |
| Monthly |
| Six Monthly |

Note: Before commencing any work obtain Roof Permit from Facilities Management Division

Roof Safety Survey

RISK ASSESSMENT

Risk Assessment / Task Location

BUILDING 1

Note: The hazards identified do not include hazards that related to specific work tasks. These should be identified in the Safe Work Method Statement (SWMS) of the contractor.

| Hazard Identification | | Risk Assessment & Control Measures | | Risk Control |
|-----------------------------------|---|------------------------------------|--|---|
| What is the Activity/Service Item | What are the potential Hazards | What is the Risk Level | List any Control Measures already Implemented | Describe what can be done to eliminate risk or reduce the harm |
| Access from Bldg 1 to Bldg 4 | Walkway within 2m of edge - Falling | H | Keep clear of roof edge | Extend the handrail from access stairs to Building 4 roof. |
| Access to Roof | Unauthorised access | M | All access points to roof are locked and made secure so are not accessible by unauthorised persons; signage | Risk Assessment and Roof Safety Survey |
| Access to Roof | Trip Hazard where the Horizontal Lifeline crosses walkway. | M | Caution when stepping over lifeline | Signage and demarkation paint |
| Working on Roof | Trip Hazard from pipe | M | Caution when stepping over services | Demarkation paint |
| Working on Roof | Leaves & Branches | L | Maintenance | Continuing Maintenance |
| Gutter Maintenance | Falling | H | Horizontal Lifeline Installed | Ensure horizontal lifeline & anchors used correctly |
| Plant Equipment | Refer to SWMS of contractor | L | Currently not near a roof edge | Ensure that Contractors supply and follow their SWMS |
| Exhaust Fan & Vents Maintenance | Refer to SWMS of contractor | L | Currently not near a roof edge | Ensure that Contractors supply and follow their SWMS |
| Air Conditioning Maintenance | Atmospheric contaminants; Legionnaires Disease from A/C Units | M | Regular inspection and cleaning of Air filters; intakes and exhausts; ductwork and cooling towers | Continuing Maintenance |
| Fume Cupboard Maintenance | Fume Cupboard Emissions | M | Nil | Signage and liase with Faculty Officer so that fume cupboards are tagged out of service when regular maintenance in required. |
| General | Drops - falling objects | M | Barracade surrounding area if required; Signage - Caution Workers Overhead; Working at Heights Guidelines - Falling Objects. | Measures to arrest fall of objects and isolate surrounding area |
| General | Trip Hazard - Roof Sheeting | M | Some walkway provided | Walkway or minimum awareness in Safe Work Procedure |
| General | Trip Hazard - Horizontal Lifeline or Anchor Points | M | Signage & System is visible | Be aware of location of horizontal lifeline & anchor points |
| General | Climbing ladder | M | Maintain 3 points of contact; Signage; and Working at Heights Guidelines - Working from Ladders | Ensure that ladder is used correctly |
| General | Environmental Hazards - Spiders, Wasps, and other insects | M | Appropriate PPE and insect repellent and Pest control as required | On-going pest control measures |
| General | Weather Trips/Slips - Wet Roofs | H | Safe Work Procedure, no work while roof are wet | Do not work while roofs are wet or have dew |
| General | Weather - Windy Condition | H | Safe Work Procedure, no working on roof in high wind condition | Do not work in windy conditions |
| General | Weather - Hot Conditions | M | Thermal Comfort Guidelines | Use suncream, hats and remain hydrated and take appropriate breaks |

Reference Documentation

Legislation

NSW Work Health and Safety Regulation 2011 Part 4.4 Falls

Public Health (Microbial Control) Regulation 2000

Australian Standards

AS 1657-2013 Fixed platforms, walkways, stairways and ladders - Design, construction and installation

AS 1891.1 - 2007 : Industrial fall-arrest systems and devices - Harnesses and ancillary equipment

AS 1891.2 - 2001 : Industrial fall-arrest systems and devices - Horizontal lifeline and rail systems

AS 1891.3 - 1997 : Industrial fall-arrest systems and devices - Fall-arrest devices

AS 1891.4 - 2009 : Industrial fall-arrest systems and devices - Selection, use and maintenance

AS 2210.1 - 2010 : Safety, protective and occupational footwear - Guide to selection, care and use

AS 2243.8 - 2006 : Safety in Laboratories - Fume Cupboards

AS 2243.9 - 2009 : Safety in Laboratories - Recirculating Fume Cabinets

AS 3666- 2011 : Air-handling & Water Systems for Buildings - Microbial Control

AS 4994.1 - 2009 : Temporary edge protection - General requirements

AS 4994.2 - 2009 : Temporary edge protection - Roof edge protection - Installation and dismantling

AS 5532 - 2013 Manufacturing requirements for single-point anchor device used for harness-based work at height

Code of Practice

Safe Work Australia - Managing the Risk of Falls at Workplaces

NSW Health Department Code of Practice for the Control of Legionnaires' Disease

UOW Documentation

Working at Heights Guidelines

Thermal Comfort Guidelines

UOW Roof Access Permit

UOW Roof Access Certificate

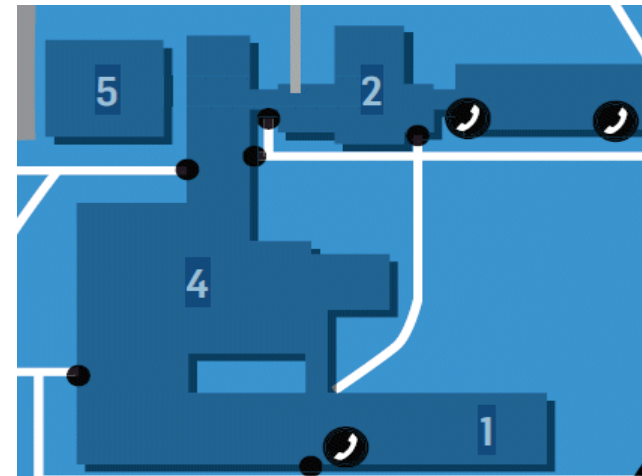
Other

[SALA - Fall Arrest and Height Safety Systems - Fall Protection Manual](#)

[Sayflida Engineered Permanent Horizontal Lifeline Systems](#)

WorkCover - Safe Working at Heights Guide 2006

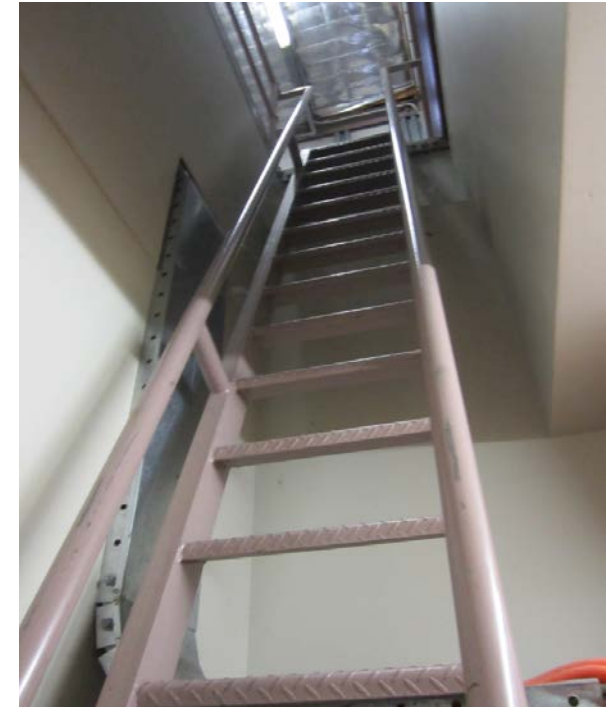
Building 1 Roof Safety Assessment



- P - location of compliance plate
- A - location of access to roof
- Horizontal Lifeline
- Safe Roof Work Area

Campus Map

Building 1 Roof Safety Assessment



Ladder to roof access



Horizontal lifeline on roof proper looking to west



Horizontal lifeline on roof proper looking to east