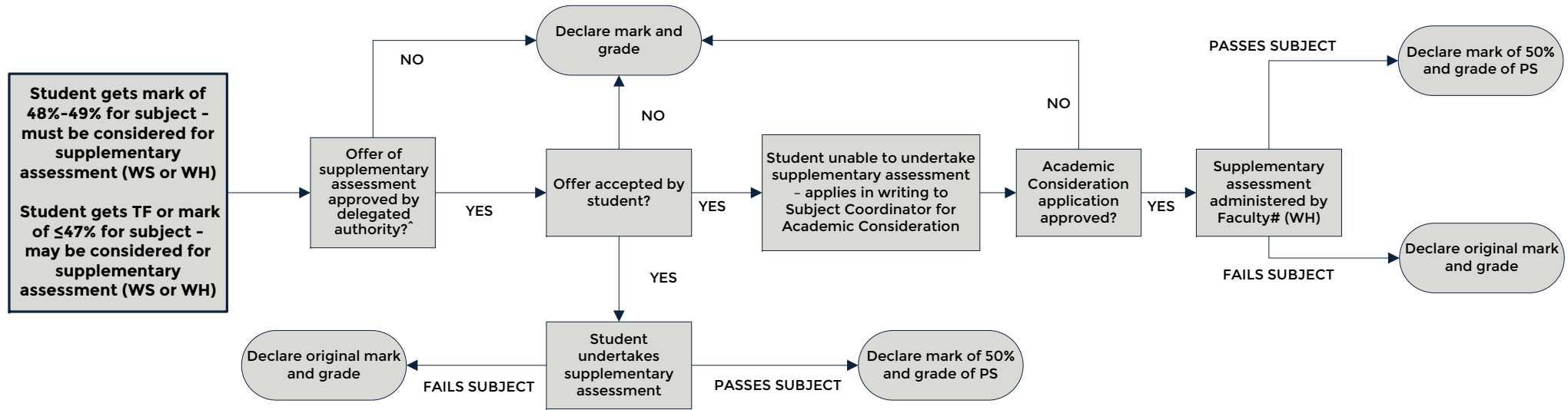
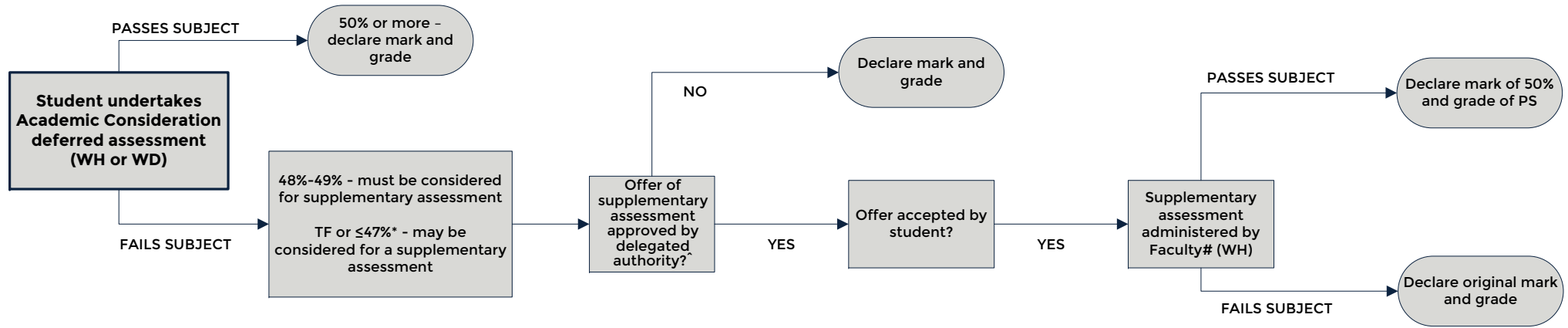


Managing Overlap between Academic Consideration Deferred Assessment and Marginal Fail Supplementary Assessment Processes



Notes:

WD for "Withheld Deferred" - Deferred exam for Academic Consideration (administered by SSD)
 WS for "Withheld Supplementary" - Supplementary exam for marginal fail (administered by SSD)
 WH for "Withheld" - Deferred or Supplementary assessment/exam administered by Faculty

It is unlikely that a supplementary assessment offered at this stage would be able to be accommodated within the SSD-administered supplementary exam period. Under the Student Academic Consideration Policy, students can complete a substitute piece of assessment in a different format from the original.

* While all students who receive a mark of 48%-49% must be considered for an offer of a supplementary assessment, students who receive a TF or a mark of 47% or below may be considered for a supplementary assessment at the discretion of the subject coordinator.

^ The Faculty Assessment Committee normally approves the offer of a supplementary assessment at the release of results. If required, the Head of School or Associate Dean (Education) may approve an offer of a supplementary assessment after the release of results, upon recommendation by the Subject Coordinator.