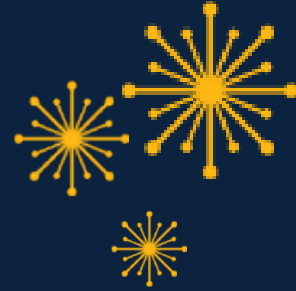


Equity and inclusion in higher education: Developing our multicultural perspectives together



Wednesday 17 May 2023 | 2.00-3.00pm | Online

You are invited to participate in the Linda Strubbe workshop - Equity and inclusion in higher education: Developing our multicultural perspectives together.

Justice, Equity, Decolonization, and Inclusion (JEDI) is a beautiful and important goal in education. Broadly speaking, JEDI is about creating welcoming environments that support students and teachers of all identities, acknowledging and working to mitigate structural barriers to participation. But what JEDI looks like in detail can vary greatly across communities and different areas of the world -- connected to culture, history (e.g., colonization and migration), etc. For example, which identities are minoritized or disadvantaged, what are the experiences of people who hold those identities, and what kinds of structural barriers and supports to participation exist? Minoritized identities may include different racial / ethnic groups, LGBTQIA2S+ people, women, people of different religious beliefs, people who are abled differently, and others. Even which words are considered appropriate for describing JEDI and minoritized groups varies by culture and place.

Through Linda's JEDI work and collaborations across five continents, she has seen directly, a beautiful diversity of interpretations and embodiments of JEDI in higher education. The goals of this workshop are to help participants deepen and broaden each of our personal understandings of what JEDI can mean and take steps to support each other in our unique JEDI efforts. In this workshop, participants will have the opportunity to collaboratively: (1) reflect on what JEDI means in each of our particular contexts, and why; (2) share our JEDI goals, efforts, strengths and barriers; and (3) offer mutual support to others in our JEDI work.

This workshop will be a one-hour live event on zoom, including breakout room discussions, presentation, and whole-group sharing.

ABOUT LINDA: Linda Strubbe, Ph.D., is an astrophysicist, education researcher, instructor, curriculum designer and instructor professional developer, independently through Strubbe Educational Consulting (<https://sites.google.com/site/lestrubbe>). Linda's Ph.D. (University of California, Berkeley) and first postdoctoral fellowship (Canadian Institute for Theoretical Astrophysics) were in theoretical astrophysics. In 2015, she transitioned her career to science education, working as an educational developer and education researcher at the University of British Columbia - Carl Wieman Science Education Initiative, and the American Association of Physics Teachers. Linda's current work focuses on professional development and evaluation for university lecturers in international contexts. She emphasizes equity and inclusion, and collaborative approaches to supporting teaching.

[Register here](https://lrc.uow.edu.au/ltportal/)

<https://lrc.uow.edu.au/ltportal/>