

Integrated CDL/WIL @UOW

Panel discussion with QA Session

WATTLE EVENT

If you are new to Work Integrated & Career Development Learning, or perhaps just to UOW, come along and hear from some local experts on these topics. The panel will discuss their experiences of WIL and CDL. The aim of the discussion is to familiarise participants with how Work Integrated learning (WIL), Career Development Learning are framed at UOW and to get your questions answered so that you can join the vibrant and supportive WIL & CDL community. We will be asking for your ideas about future directions for that community at the end of this session.

19 OCTOBER 2022

9.30am-10.30AM | 21.G08 (or Zoom)

Register at <https://Integrated-CDL-WIL-at-UOW.eventbrite.com.au>



UNIVERSITY
OF WOLLONGONG
AUSTRALIA

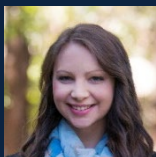
PANEL MEMBERS



Dr Erin Twyford
Faculty of
Business and Law



Denny Nesbitt
Student Engagement
and Employability



Dr Bonnie Dean
Learning, Teaching
& Curriculum



Dr Michelle J. Eady
Faculty of the Arts, Social
Sciences & Humanities