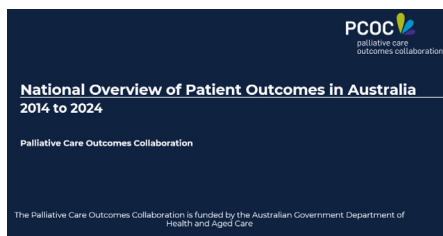




Celebrating 20 years in improving palliative care outcomes

National Overview of Patient Outcomes



We are pleased to announce the release of this new report, offering a **high-level summary of outcomes and access trends in Australian palliative care** between 2014 and 2024. Some key insights include:

The **20 years** of patient outcome data have demonstrated **measurable improvements** in the quality of palliative care in Australia.

Service participation continues to grow by 4.5% annually, with data now **capturing 20% of all-cause deaths in 2024**.

Referral patterns have not changed over the past decade, with hospitals continuing to be the largest referral source. However, **referral volumes have more than doubled** over the same period.

Lung cancer remains the most common diagnosis, while **dementia** diagnoses show a continuous upward trend.

While patient outcomes are improving (particularly for pain and breathlessness), **further progress is needed**.

Read the full report: [National Overview of Patient Outcomes in Australia](#).

breathlessness),
further progress is needed.

Read the full report: National Overview of Patient Outcomes in Australia.



[View this email in your browser](#)

Copyright (C) 2025 Palliative Care Outcomes Collaboration. All rights reserved.

Please email us to unsubscribe



This email was sent to <<Email Address>>

[why did I get this?](#) [unsubscribe from this list](#) [update subscription preferences](#)

Palliative Care Outcomes Collaboration · Building 234 iC Enterprise 1 Innovation campus · University of Wollongong, NSW 2522 · Australia