

Patient outcomes

	✓	N	Result
Date ready for care to episode start			
Day of/day after	3127	3147	99.4%
Time in unstable phase			
Three days or less	334	369	90.5%

Symptoms & problems

Anticipatory Care

Pain PCPSS	5722	6703	85.4%
Pain SAS	5735	6652	86.2%
Fatigue	4679	5674	82.5%
Breathing problems	6723	7187	93.5%
Family/carer	4990	6051	82.5%

Responsive Care

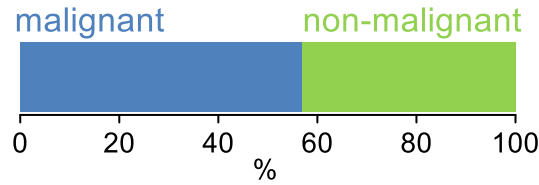
Pain PCPSS	901	1240	72.7%
Pain SAS	859	1275	67.4%
Fatigue	1142	2237	51.1%
Breathing problems	433	719	60.2%
Family/carer	829	1253	66.2%

Casemix adjusted outcomes

Pain PCPSS	7943	0.02
Other symptoms	7658	0.08
Family/carer	7304	0.08
Psychological/spiritual	7933	0.06
Pain SAS	7927	0.17
Nausea	7907	0.11
Breathing problems	7906	0.18
Bowel problems	7895	0.18

✓ = Positive outcomes N = Total outcomes

Diagnosis

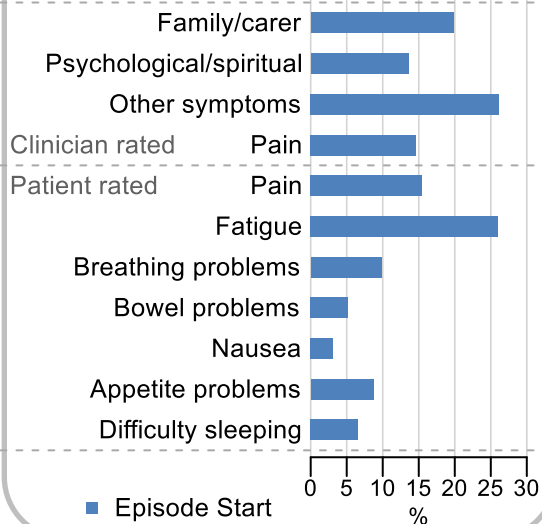


Age at episode start

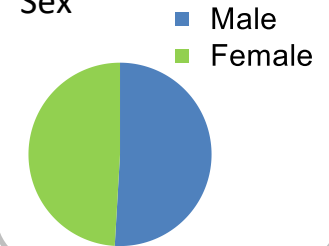
Mean: **75.7**
Median: **78.0**

Symptoms & problems

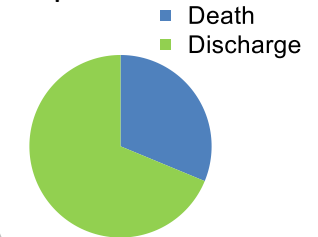
proportion of moderate / severe scores



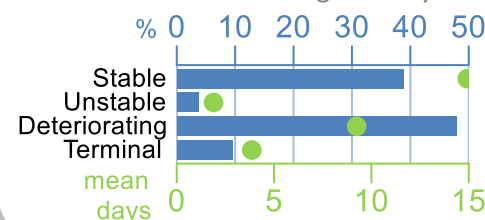
Sex



Episode end



Phase % and mean length in days

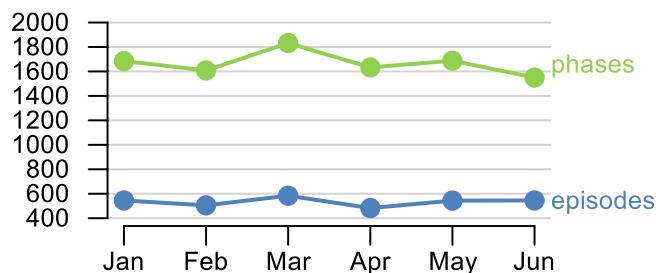


Phases per episode

2.5

Volume of data

Patients: **2,894**
Episodes: **3,584**
Phases: **9,996**



Episode length in days

Mean: **29.7**
Median: **19.0**

