

Patient outcomes

	✓	N	Result
Date ready for care to episode start			
Day of/day after	2936	2982	98.5%
Time in unstable phase			
Three days or less	726	796	91.2%

Symptoms & problems

Anticipatory Care

Pain PCPSS	3361	3696	90.9%
Pain SAS	3067	3420	89.7%
Fatigue	3227	3513	91.9%
Breathing problems	3754	3920	95.8%
Family/carer	2273	2472	91.9%

Responsive Care

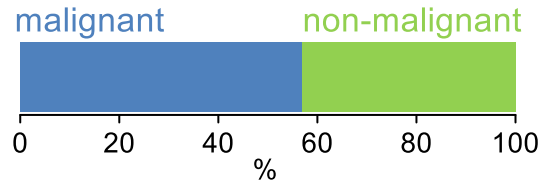
Pain PCPSS	636	876	72.6%
Pain SAS	718	1127	63.7%
Fatigue	632	1020	62.0%
Breathing problems	381	626	60.9%
Family/carer	323	525	61.5%

Casemix adjusted outcomes

Pain PCPSS	4572	0.13
Other symptoms	4220	0.24
Family/carer	2997	0.22
Psychological/spiritual	4556	0.22
Pain SAS	4547	0.30
Nausea	4545	0.24
Breathing problems	4546	0.36
Bowel problems	4543	0.28

✓ = Positive outcomes N = Total outcomes

Diagnosis

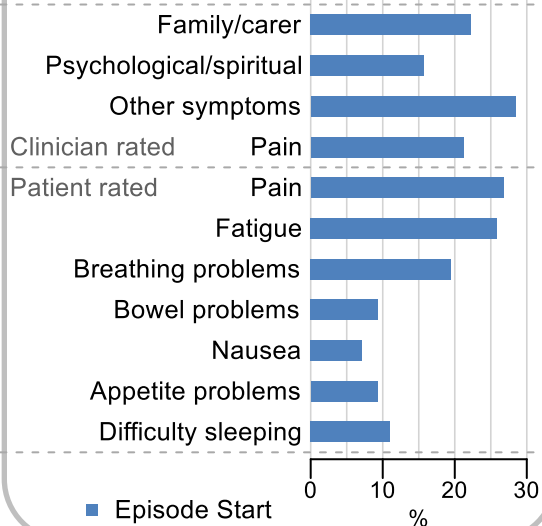


Age at episode start

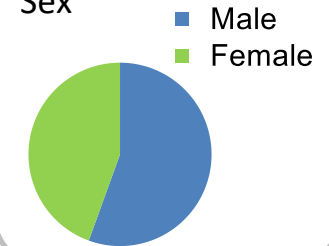
Mean: **74.9**
Median: **77.0**

Symptoms & problems

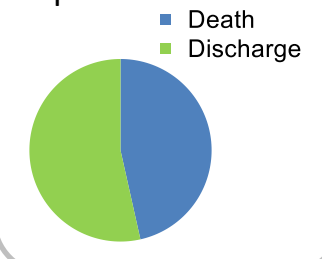
proportion of moderate / severe scores



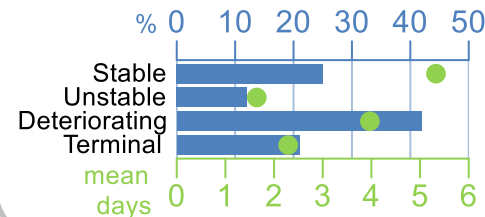
Sex



Episode end



Phase % and mean length in days

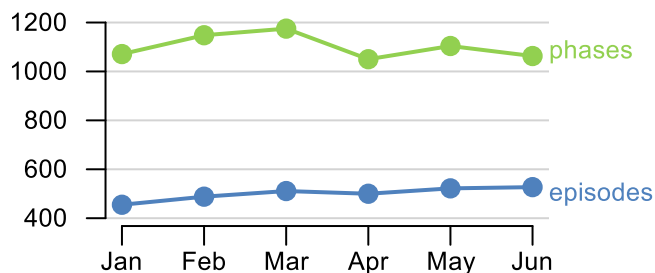


Phases per episode

2.2

Volume of data

Patients: **2,599**
Episodes: **3,051**
Phases: **6,611**



Episode length in days

Mean: **8.1**
Median: **4.0**

