

Patient outcomes

	✓	N	Result
Date ready for care to episode start			
Day of/day after	877	900	97.4%
Time in unstable phase			
Three days or less	162	186	87.1%

Symptoms & problems

Anticipatory Care

Pain PCPSS	816	909	89.8%
Pain SAS	767	852	90.0%
Fatigue	755	841	89.8%
Breathing problems	901	961	93.8%
Family/carer	934	1000	93.4%

Responsive Care

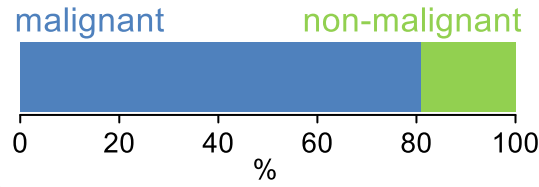
Pain PCPSS	139	235	59.1%
Pain SAS	146	270	54.1%
Fatigue	176	276	63.8%
Breathing problems	97	160	60.6%
Family/carer	83	107	77.6%

Casemix adjusted outcomes

Pain PCPSS	1144	-0.04
Other symptoms	1141	0.19
Family/carer	1107	0.20
Psychological/spiritual	1134	0.18
Pain SAS	1122	0.06
Nausea	1120	0.16
Breathing problems	1121	0.24
Bowel problems	1118	0.07

✓ = Positive outcomes N = Total outcomes

Diagnosis

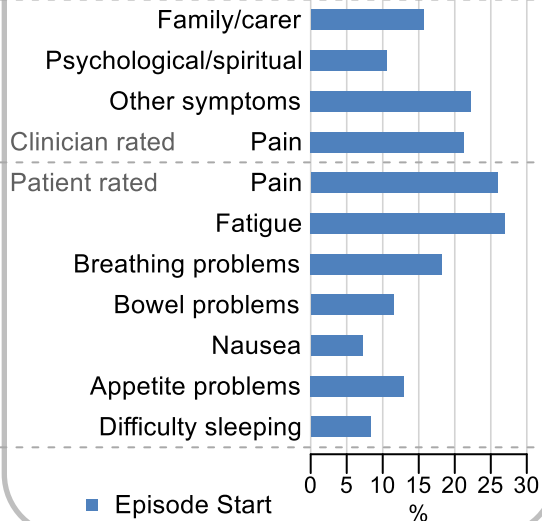


Age at episode start

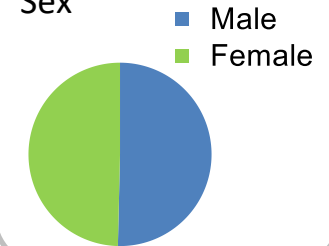
Mean: **72.7**
Median: **74.0**

Symptoms & problems

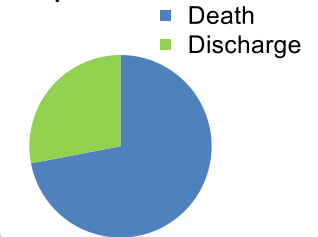
proportion of moderate / severe scores



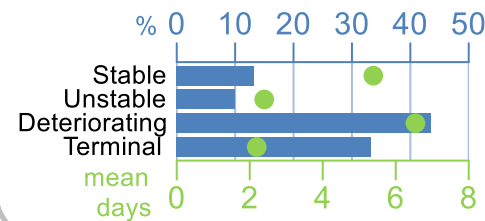
Sex



Episode end



Phase % and mean length in days

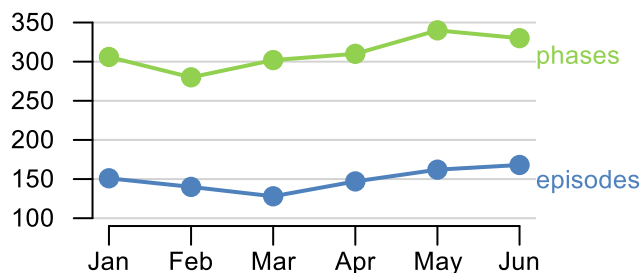


Phases per episode

2.0

Volume of data

Patients: **816**
Episodes: **922**
Phases: **1,868**



Episode length in days

Mean: **9.2**
Median: **5.0**

