

Patient outcomes

	✓	N	Result
Date ready for care to episode start			
Day of/day after	5231	6341	82.5%
Time in unstable phase			
Three days or less	2010	2216	90.7%

Symptoms & problems

Anticipatory Care

Pain PCPSS	7652	8771	87.2%
Pain SAS	8390	9618	87.2%
Fatigue	6873	7872	87.3%
Breathing problems	7918	8487	93.3%
Family/carer	5937	7270	81.7%

Responsive Care

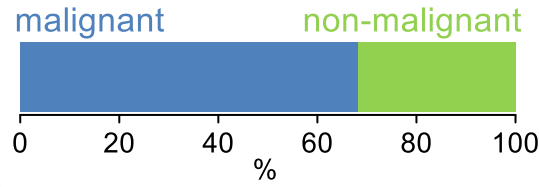
Pain PCPSS	881	1656	53.2%
Pain SAS	877	1639	53.5%
Fatigue	801	1833	43.7%
Breathing problems	394	893	44.1%
Family/carer	870	2120	41.0%

Casemix adjusted outcomes

Pain PCPSS	10427	-0.03
Other symptoms	10161	0.04
Family/carer	9390	-0.03
Psychological/spiritual	9837	0.05
Pain SAS	11257	-0.09
Nausea	9592	-0.05
Breathing problems	9380	0.02
Bowel problems	9035	0.08

✓ = Positive outcomes N = Total outcomes

Diagnosis

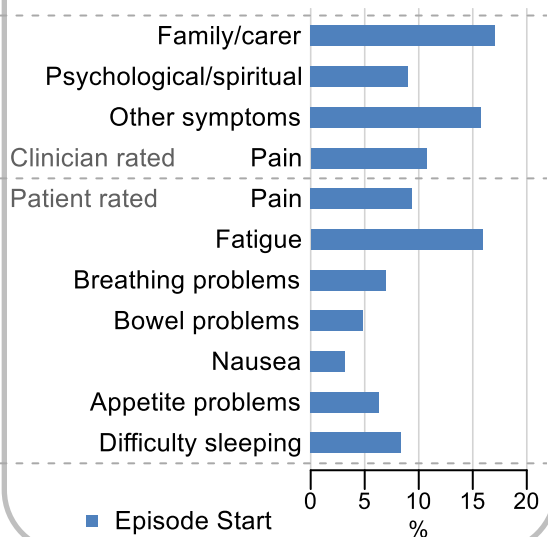


Age at episode start

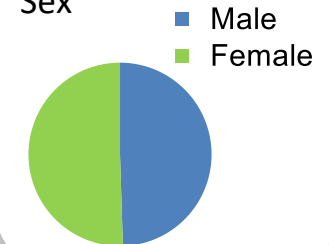
Mean: **74.6**
Median: **77.0**

Symptoms & problems

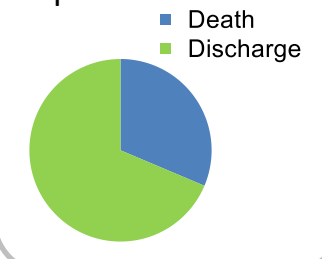
proportion of moderate / severe scores



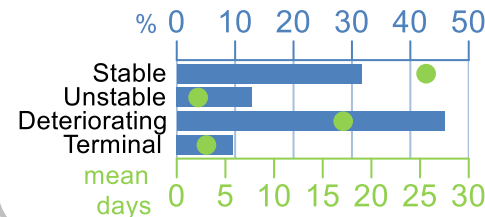
Sex



Episode end



Phase % and mean length in days

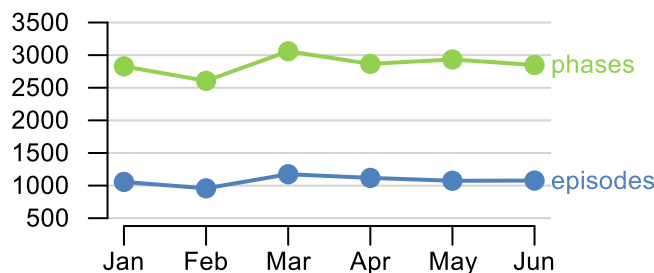


Phases per episode

2.1

Volume of data

Patients: **6,184**
Episodes: **7,739**
Phases: **17,142**



Episode length in days

Mean: **41.8**
Median: **31.0**

