

Patient outcomes

| | ✓ | N | Result |
|--------------------------------------|------|------|--------|
| Date ready for care to episode start | | | |
| Day of/day after | 1995 | 2453 | 81.3% |
| Time in unstable phase | | | |
| Three days or less | 341 | 533 | 64.0% |

Symptoms & problems

Anticipatory Care

| | | | |
|--------------------|------|------|-------|
| Pain PCPSS | 1923 | 2214 | 86.9% |
| Pain SAS | 1783 | 2063 | 86.4% |
| Fatigue | 1223 | 1503 | 81.4% |
| Breathing problems | 2009 | 2176 | 92.3% |
| Family/carer | 1750 | 2047 | 85.5% |

Responsive Care

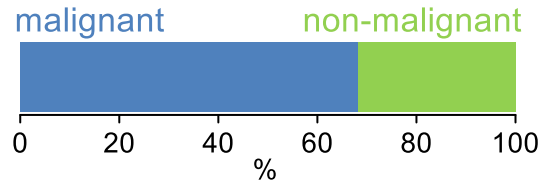
| | | | |
|--------------------|-----|------|-------|
| Pain PCPSS | 258 | 607 | 42.5% |
| Pain SAS | 272 | 656 | 41.5% |
| Fatigue | 323 | 1157 | 27.9% |
| Breathing problems | 154 | 456 | 33.8% |
| Family/carer | 223 | 685 | 32.6% |

Casemix adjusted outcomes

| | | |
|-------------------------|------|-------|
| Pain PCPSS | 2821 | -0.10 |
| Other symptoms | 2768 | 0.02 |
| Family/carer | 2732 | -0.02 |
| Psychological/spiritual | 2757 | 0.00 |
| Pain SAS | 2719 | -0.27 |
| Nausea | 2656 | -0.16 |
| Breathing problems | 2632 | -0.06 |
| Bowel problems | 2574 | -0.16 |

✓ = Positive outcomes N = Total outcomes

Diagnosis

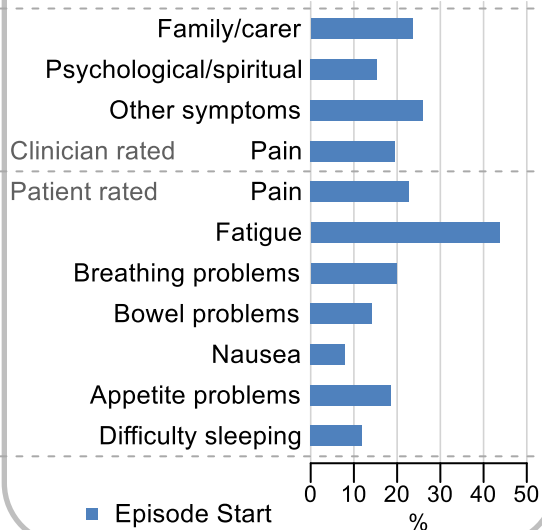


Age at episode start

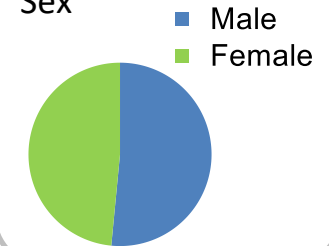
Mean: **74.7**
Median: **77.0**

Symptoms & problems

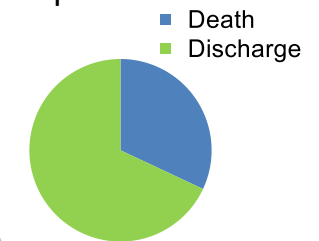
proportion of moderate / severe scores



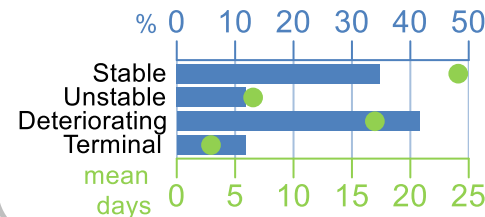
Sex



Episode end



Phase % and mean length in days

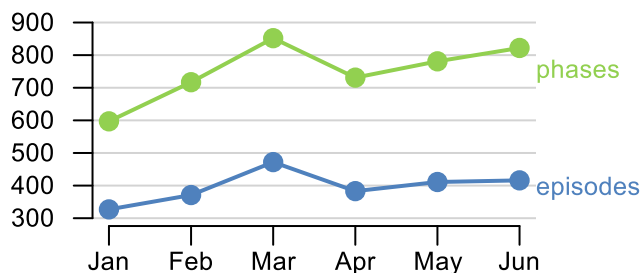


Phases per episode

1.7

Volume of data

Patients: **2,335**
Episodes: **2,659**
Phases: **4,500**



Episode length in days

Mean: **35.0**
Median: **21.0**

