

Patient outcomes

	✓	N	Result
Date ready for care to episode start			
Day of/day after	3814	3851	99.0%
Time in unstable phase			
Three days or less	835	962	86.8%

Symptoms & problems

Anticipatory Care

Pain PCPSS	3327	3595	92.5%
Pain SAS	2509	2773	90.5%
Fatigue	2442	2660	91.8%
Breathing problems	2913	3041	95.8%
Family/carer	3536	3712	95.3%

Responsive Care

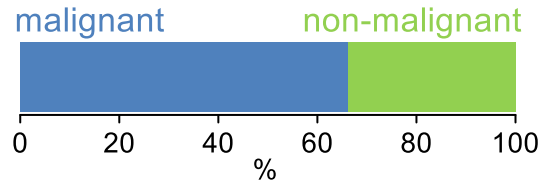
Pain PCPSS	543	882	61.6%
Pain SAS	419	688	60.9%
Fatigue	410	791	51.8%
Breathing problems	219	401	54.6%
Family/carer	204	376	54.3%

Casemix adjusted outcomes

Pain PCPSS	4477	0.07
Other symptoms	4382	0.26
Family/carer	4088	0.25
Psychological/spiritual	4381	0.23
Pain SAS	3461	0.32
Nausea	3438	0.23
Breathing problems	3442	0.33
Bowel problems	3441	0.29

✓ = Positive outcomes N = Total outcomes

Diagnosis

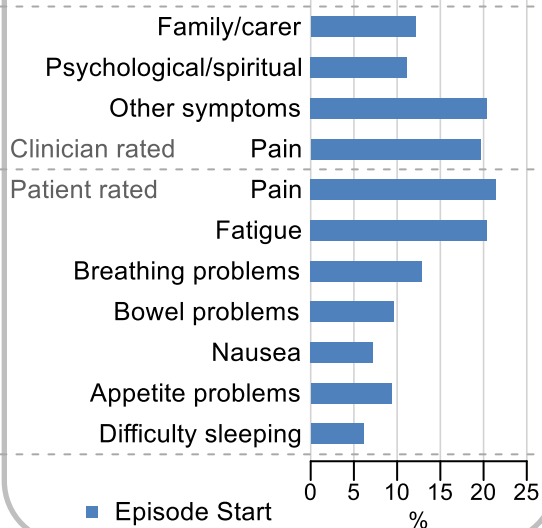


Age at episode start

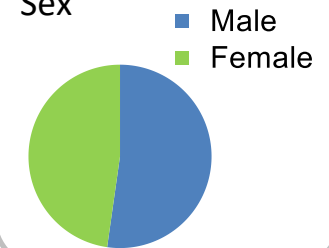
Mean: **73.0**
Median: **75.0**

Symptoms & problems

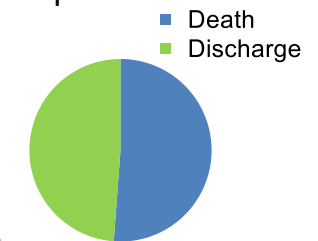
proportion of moderate / severe scores



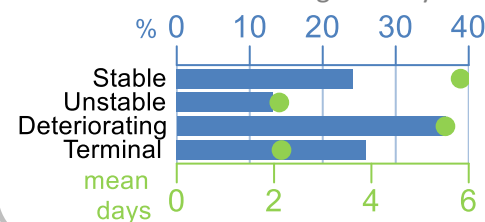
Sex



Episode end



Phase % and mean length in days

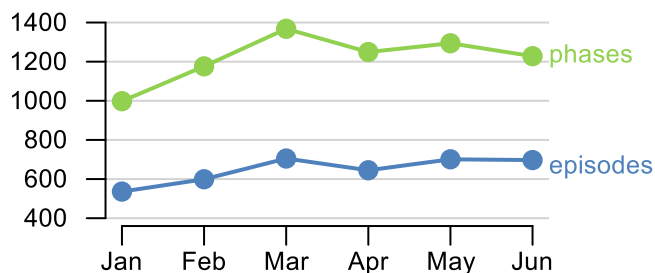


Phases per episode

1.9

Volume of data

Patients: **3,183**
Episodes: **3,934**
Phases: **7,313**



Episode length in days

Mean: **8.1**
Median: **4.0**

