

Patient outcomes

	✓	N	Result
Date ready for care to episode start			
Day of/day after	2307	2583	89.3%
Time in unstable phase			
Three days or less	692	864	80.1%

Symptoms & problems

Anticipatory Care

Pain PCPSS	4400	5221	84.3%
Pain SAS	4193	4991	84.0%
Fatigue	3585	4523	79.3%
Breathing problems	4939	5399	91.5%
Family/carer	4008	4909	81.6%

Responsive Care

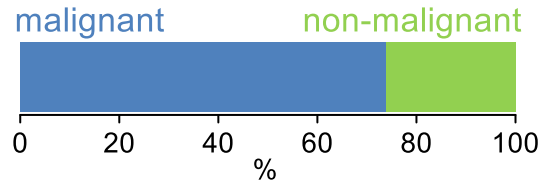
Pain PCPSS	721	1183	60.9%
Pain SAS	702	1255	55.9%
Fatigue	896	1659	54.0%
Breathing problems	387	739	52.4%
Family/carer	658	1186	55.5%

Casemix adjusted outcomes

Pain PCPSS	6404	-0.08
Other symptoms	6398	-0.02
Family/carer	6095	-0.02
Psychological/spiritual	6273	-0.01
Pain SAS	6246	-0.10
Nausea	6077	-0.02
Breathing problems	6138	-0.01
Bowel problems	6029	-0.04

✓ = Positive outcomes N = Total outcomes

Diagnosis

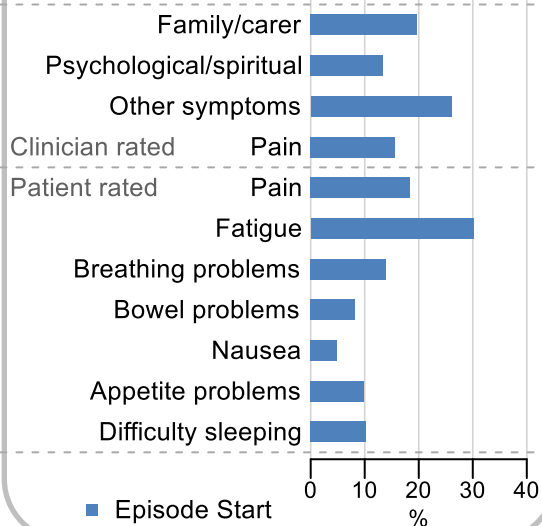


Age at episode start

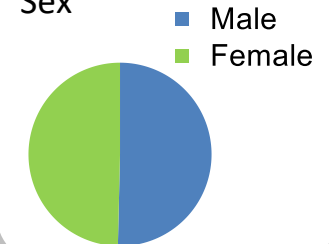
Mean: **74.3**
Median: **76.0**

Symptoms & problems

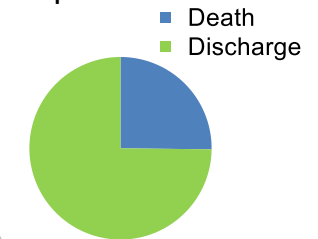
proportion of moderate / severe scores



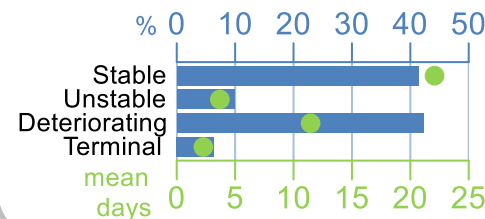
Sex



Episode end



Phase % and mean length in days

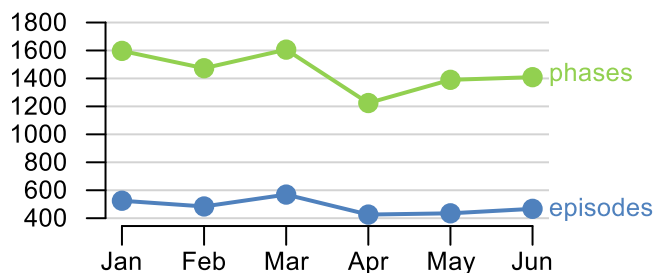


Phases per episode

2.5

Volume of data

Patients: **2,967**
Episodes: **3,462**
Phases: **8,699**



Episode length in days

Mean: **45.2**
Median: **36.0**

