

Patient outcomes

	✓	N	Result
Date ready for care to episode start			
Day of/day after	4878	4966	98.2%
Time in unstable phase			
Three days or less	2241	2542	88.2%

Symptoms & problems

Anticipatory Care

Pain PCPSS	6772	7329	92.4%
Pain SAS	5914	6558	90.2%
Fatigue	6606	7088	93.2%
Breathing problems	7180	7524	95.4%
Family/carer	7112	7689	92.5%

Responsive Care

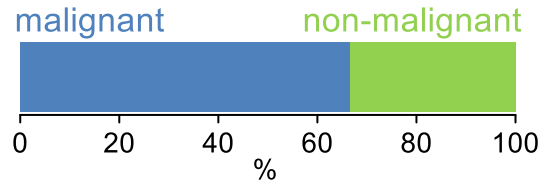
Pain PCPSS	1123	1767	63.6%
Pain SAS	1268	2075	61.1%
Fatigue	943	1524	61.9%
Breathing problems	620	1107	56.0%
Family/carer	655	1155	56.7%

Casemix adjusted outcomes

Pain PCPSS	9096	0.11
Other symptoms	9095	0.25
Family/carer	8844	0.19
Psychological/spiritual	9079	0.19
Pain SAS	8633	0.32
Nausea	8641	0.20
Breathing problems	8631	0.30
Bowel problems	8633	0.29

✓ = Positive outcomes N = Total outcomes

Diagnosis

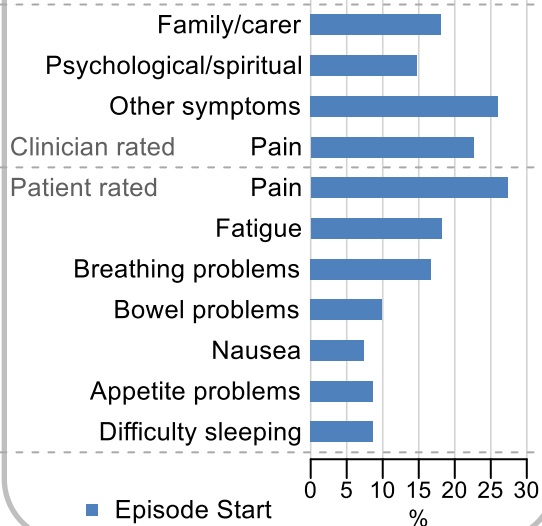


Age at episode start

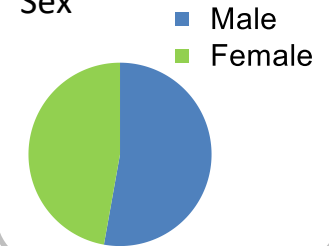
Mean: **75.4**
Median: **77.0**

Symptoms & problems

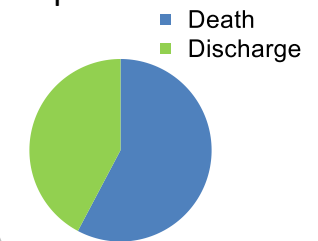
proportion of moderate / severe scores



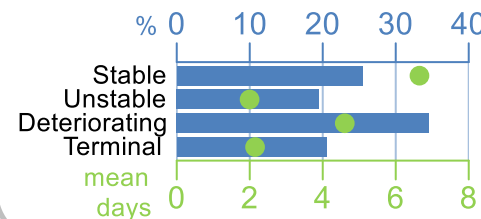
Sex



Episode end



Phase % and mean length in days

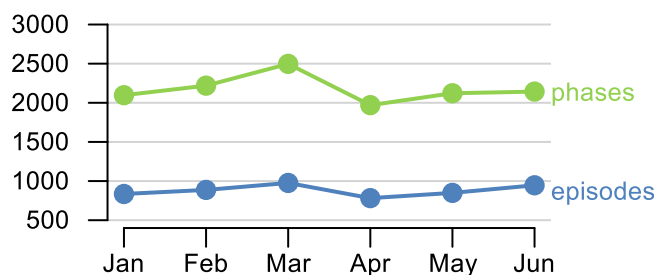


Phases per episode

2.4

Volume of data

Patients: **4,854**
Episodes: **5,393**
Phases: **13,048**



Episode length in days

Mean: **10.1**
Median: **6.0**

