

## Patient outcomes

	✓	N	Result
Date ready for care to episode start			
Day of/day after	14550	16738	86.9%
Time in unstable phase			
Three days or less	4057	4786	84.8%

## Symptoms & problems

### Anticipatory Care

Pain PCPSS	22241	25959	85.7%
Pain SAS	22433	26120	85.9%
Fatigue	18502	22101	83.7%
Breathing problems	24411	26330	92.7%
Family/carer	19150	23241	82.4%

### Responsive Care

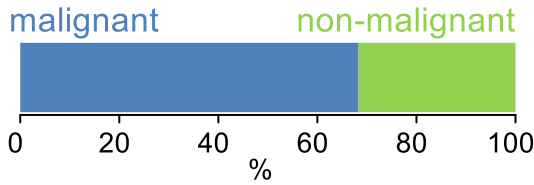
Pain PCPSS	3246	5623	57.7%
Pain SAS	3137	5777	54.3%
Fatigue	3628	8047	45.1%
Breathing problems	1613	3415	47.2%
Family/carer	2959	6101	48.5%

## Casemix adjusted outcomes

Pain PCPSS	31582	-0.05
Other symptoms	30746	0.03
Family/carer	29342	0.01
Psychological/spiritual	30720	0.03
Pain SAS	31897	-0.08
Nausea	29922	-0.03
Breathing problems	29745	0.04
Bowel problems	29201	0.03

✓ = Positive outcomes    N = Total outcomes

## Diagnosis

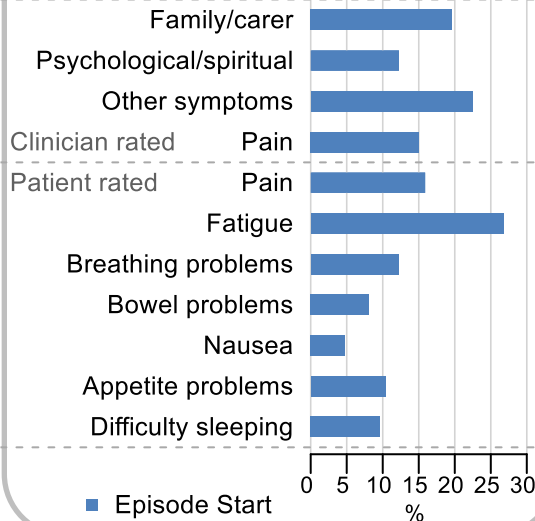


## Age at episode start

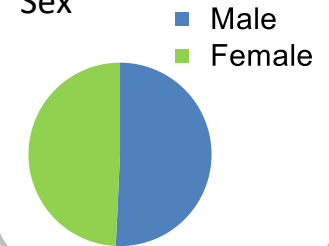
Mean: **74.6**  
Median: **76.0**

## Symptoms & problems

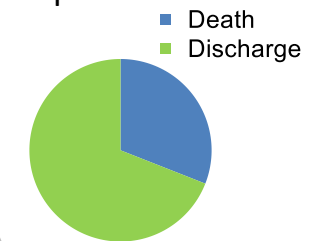
proportion of moderate / severe scores



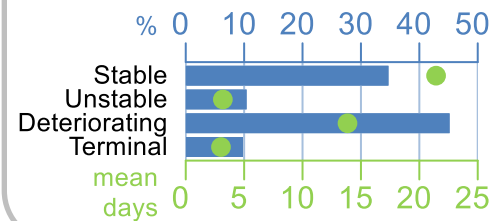
## Sex



## Episode end



## Phase % and mean length in days



## Phases per episode

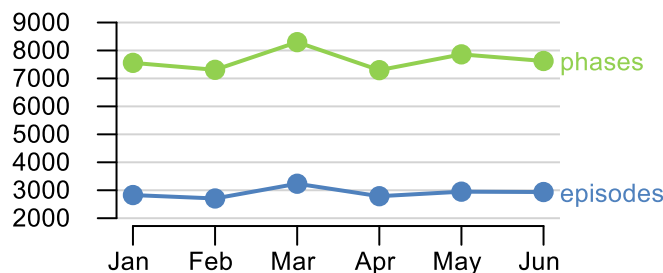
**2.1**

## Volume of data

Patients: **16,811**

Episodes: **20,259**

Phases: **45,947**



## Episode length in days

Mean: **37.6**  
Median: **25.0**

