

## Patient outcomes

	✓	N	Result
Date ready for care to episode start			
Day of/day after	18820	19096	98.6%
Time in unstable phase			
Three days or less	5119	5738	89.2%

## Symptoms & problems

### Anticipatory Care

Pain PCPSS	20714	22510	92.0%
Pain SAS	17401	19280	90.3%
Fatigue	18485	19945	92.7%
Breathing problems	20865	21816	95.6%
Family/carer	20007	21426	93.4%

### Responsive Care

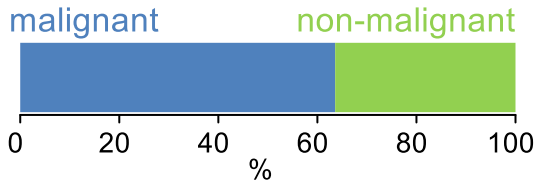
Pain PCPSS	3299	5117	64.5%
Pain SAS	3391	5516	61.5%
Fatigue	2862	4801	59.6%
Breathing problems	1693	2966	57.1%
Family/carer	1685	2935	57.4%

## Casemix adjusted outcomes

Pain PCPSS	27627	0.10
Other symptoms	27018	0.26
Family/carer	24361	0.22
Psychological/spiritual	27441	0.21
Pain SAS	24796	0.30
Nausea	24769	0.21
Breathing problems	24782	0.31
Bowel problems	24750	0.29

✓ = Positive outcomes    N = Total outcomes

## Diagnosis

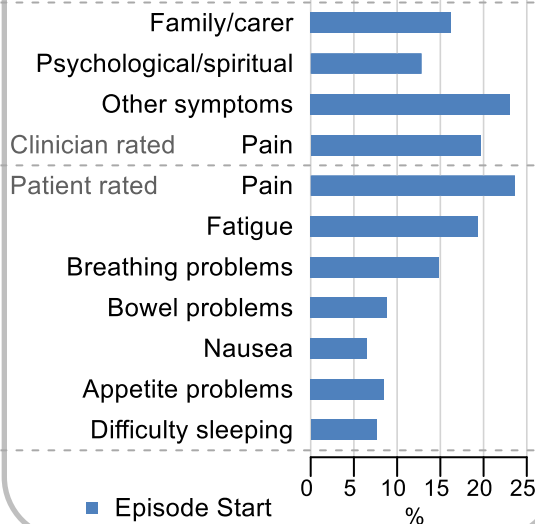


## Age at episode start

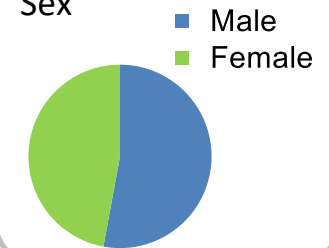
Mean: **74.7**  
Median: **77.0**

## Symptoms & problems

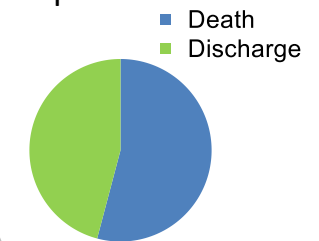
proportion of moderate / severe scores



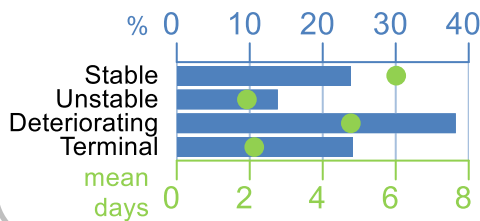
## Sex



## Episode end



## Phase % and mean length in days



## Phases per episode

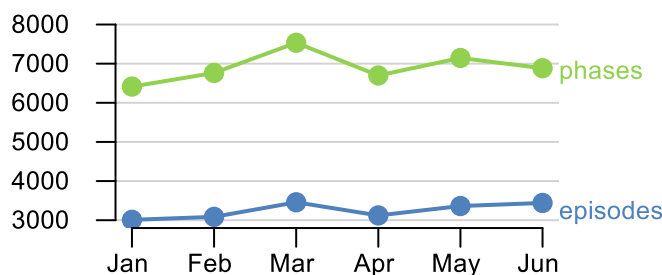
**2.1**

## Volume of data

Patients: **16,692**

Episodes: **19,819**

Phases: **41,440**



## Episode length in days

Mean: **8.5**  
Median: **4.0**

