

Patient outcomes

	✓	N	Result
Date ready for care to episode start			
Day of/day after	2832	2918	97.1%
Time in unstable phase			
Three days or less	713	746	95.6%

Symptoms & problems

Anticipatory Care

Pain PCPSS	3275	3610	90.7%
Pain SAS	2971	3354	88.6%
Fatigue	3125	3478	89.9%
Breathing problems	3550	3783	93.8%
Family/carer	2378	2603	91.4%

Responsive Care

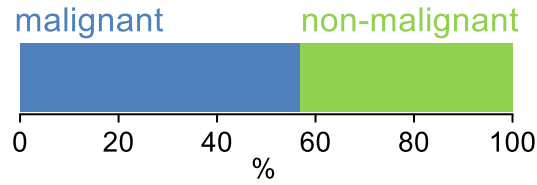
Pain PCPSS	603	815	74.0%
Pain SAS	679	1067	63.6%
Fatigue	626	940	66.6%
Breathing problems	404	639	63.2%
Family/carer	327	473	69.1%

Casemix adjusted outcomes

Pain PCPSS	4425	0.13
Other symptoms	3966	0.26
Family/carer	3076	0.21
Psychological/spiritual	4418	0.21
Pain SAS	4421	0.27
Nausea	4425	0.18
Breathing problems	4422	0.30
Bowel problems	4410	0.30

✓ = Positive outcomes N = Total outcomes

Diagnosis

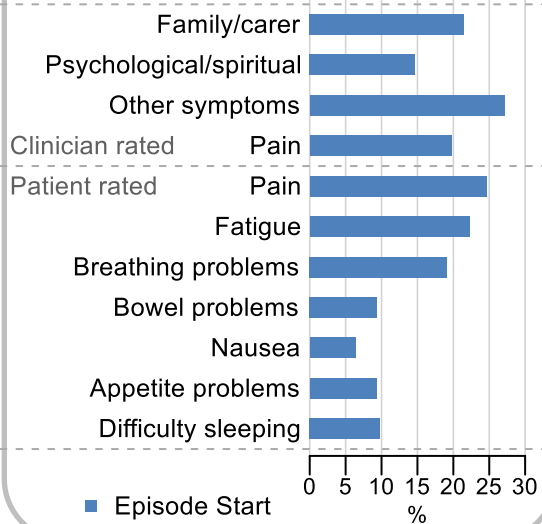


Age at episode start

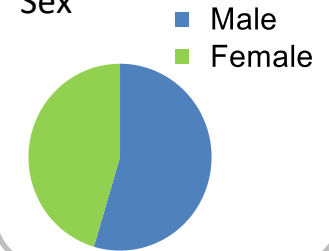
Mean: **74.7**
Median: **77.0**

Symptoms & problems

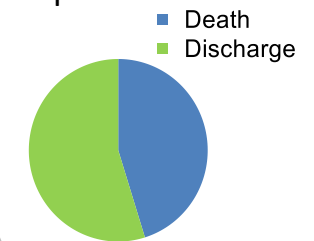
proportion of moderate / severe scores



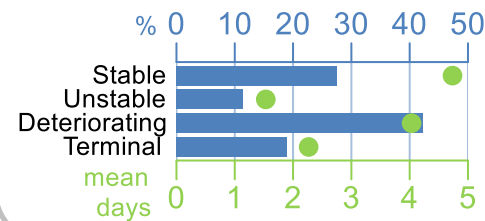
Sex



Episode end



Phase % and mean length in days

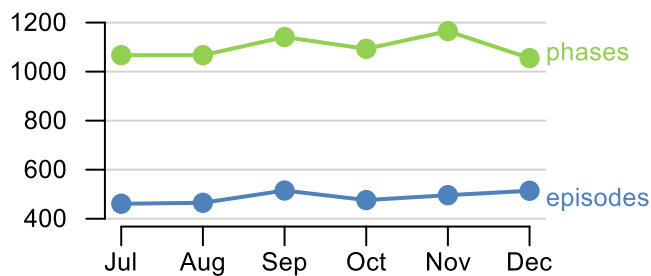


Phases per episode

2.2

Volume of data

Patients: **2,527**
Episodes: **2,973**
Phases: **6,588**



Episode length in days

Mean: **8.0**
Median: **4.0**

