

## Patient outcomes

	✓	N	Result
Date ready for care to episode start			
Day of/day after	3454	3491	98.9%
Time in unstable phase			
Three days or less	372	387	96.1%

## Symptoms & problems

### Anticipatory Care

Pain PCPSS	6457	7406	87.2%
Pain SAS	6214	7200	86.3%
Fatigue	4952	6091	81.3%
Breathing problems	7230	7744	93.4%
Family/carer	5789	6743	85.9%

### Responsive Care

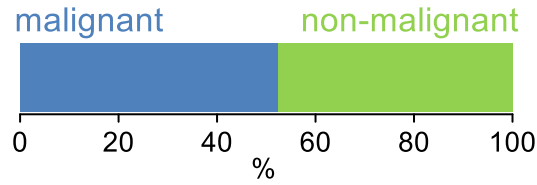
Pain PCPSS	916	1222	75.0%
Pain SAS	968	1418	68.3%
Fatigue	1258	2523	49.9%
Breathing problems	529	867	61.0%
Family/carer	814	1206	67.5%

## Casemix adjusted outcomes

Pain PCPSS	8628	0.04
Other symptoms	8351	0.09
Family/carer	7949	0.12
Psychological/spiritual	8619	0.06
Pain SAS	8618	0.18
Nausea	8608	0.13
Breathing problems	8611	0.18
Bowel problems	8590	0.22

✓ = Positive outcomes    N = Total outcomes

## Diagnosis

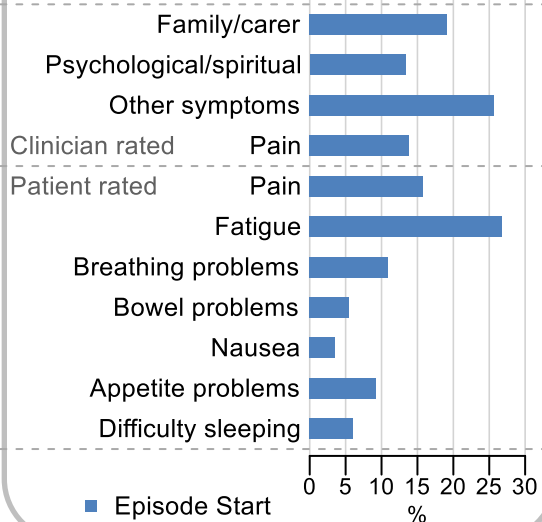


## Age at episode start

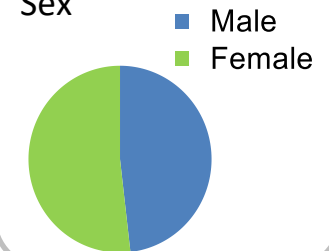
Mean: **76.2**  
Median: **79.0**

## Symptoms & problems

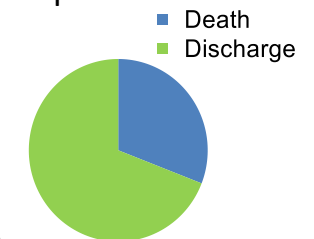
proportion of moderate / severe scores



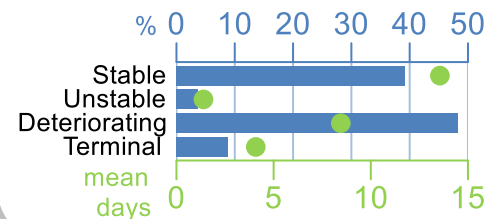
## Sex



## Episode end



## Phase % and mean length in days

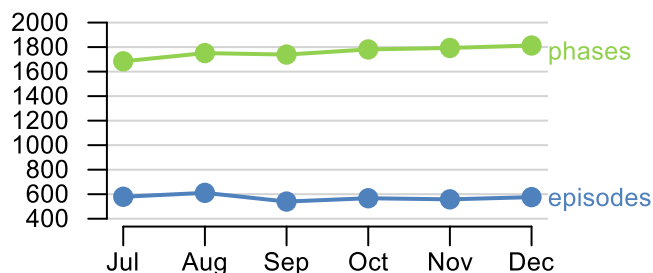


## Phases per episode

**2.4**

## Volume of data

Patients: **3,120**  
Episodes: **3,876**  
Phases: **10,561**



## Episode length in days

Mean: **26.0**  
Median: **16.0**

