

## Patient outcomes

	✓	N	Result
Date ready for care to episode start			
Day of/day after	1562	1767	88.4%
Time in unstable phase			
Three days or less	415	483	85.9%

## Symptoms & problems

### Anticipatory Care

Pain PCPSS	1674	1966	85.1%
Pain SAS	1566	1822	85.9%
Fatigue	1382	1667	82.9%
Breathing problems	1892	2041	92.7%
Family/carer	1604	1947	82.4%

### Responsive Care

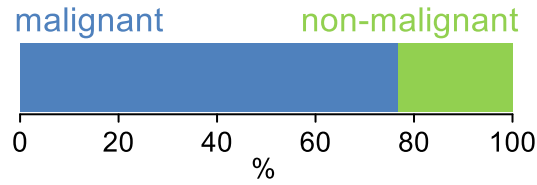
Pain PCPSS	250	546	45.8%
Pain SAS	258	601	42.9%
Fatigue	328	761	43.1%
Breathing problems	147	382	38.5%
Family/carer	252	510	49.4%

## Casemix adjusted outcomes

Pain PCPSS	2512	-0.18
Other symptoms	2508	-0.08
Family/carer	2457	-0.01
Psychological/spiritual	2504	0.00
Pain SAS	2423	-0.32
Nausea	2419	-0.18
Breathing problems	2423	-0.07
Bowel problems	2421	-0.09

✓ = Positive outcomes    N = Total outcomes

## Diagnosis

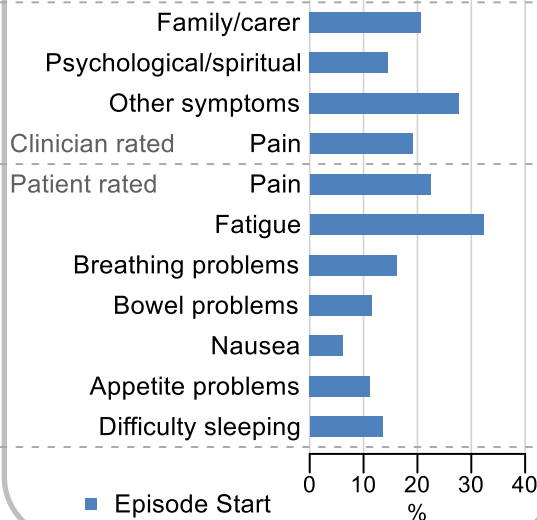


## Age at episode start

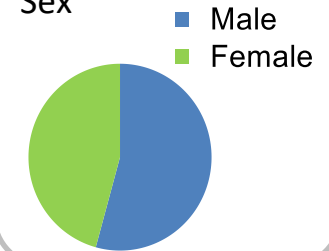
Mean: **73.2**  
Median: **75.0**

## Symptoms & problems

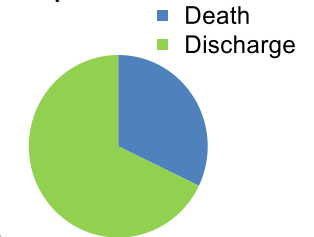
proportion of moderate / severe scores



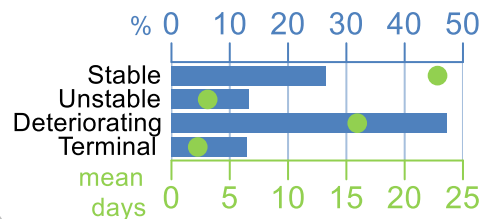
## Sex



## Episode end



## Phase % and mean length in days

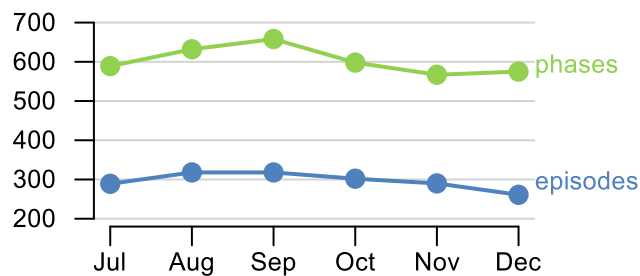


## Phases per episode

**1.8**

## Volume of data

Patients: **1,715**  
Episodes: **1,955**  
Phases: **3,619**



## Episode length in days

Mean: **33.5**  
Median: **21.0**

