

Patient outcomes

	✓	N	Result
Date ready for care to episode start			
Day of/day after	785	821	95.6%
Time in unstable phase			
Three days or less	161	168	95.8%

Symptoms & problems

Anticipatory Care

Pain PCPSS	813	904	89.9%
Pain SAS	712	803	88.7%
Fatigue	686	780	87.9%
Breathing problems	873	919	95.0%
Family/carer	900	963	93.5%

Responsive Care

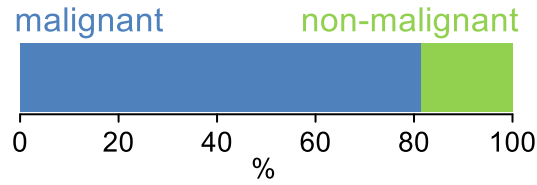
Pain PCPSS	132	195	67.7%
Pain SAS	184	284	64.8%
Fatigue	207	305	67.9%
Breathing problems	95	170	55.9%
Family/carer	76	108	70.4%

Casemix adjusted outcomes

Pain PCPSS	1099	-0.03
Other symptoms	1097	0.21
Family/carer	1071	0.20
Psychological/spiritual	1099	0.20
Pain SAS	1087	0.15
Nausea	1085	0.20
Breathing problems	1089	0.30
Bowel problems	1086	0.24

✓ = Positive outcomes N = Total outcomes

Diagnosis

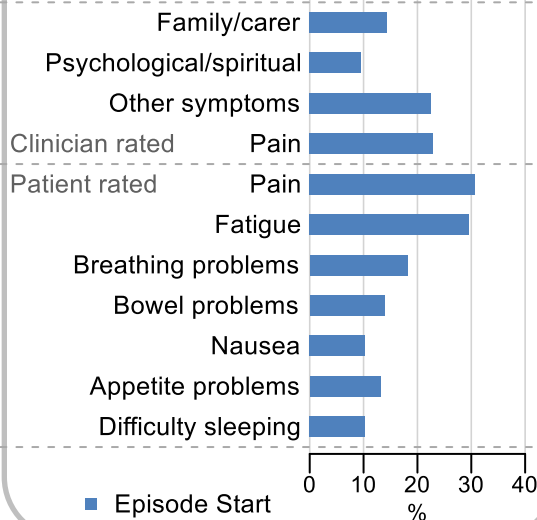


Age at episode start

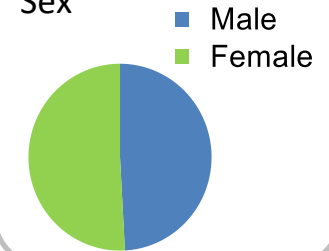
Mean: **72.3**
Median: **74.0**

Symptoms & problems

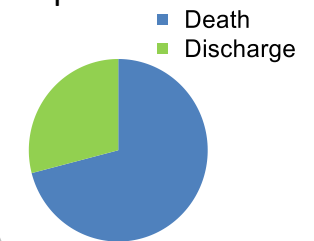
proportion of moderate / severe scores



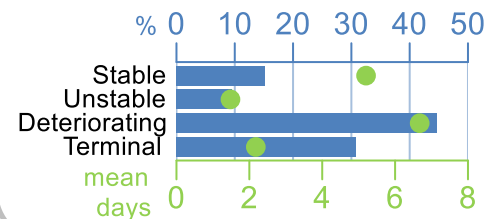
Sex



Episode end



Phase % and mean length in days

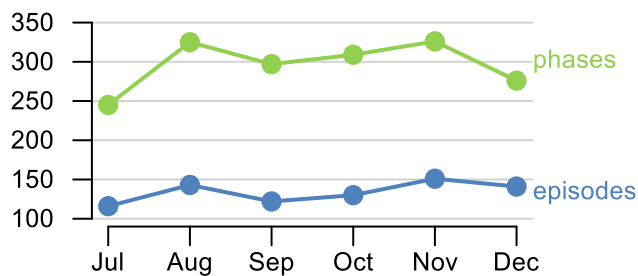


Phases per episode

2.2

Volume of data

Patients: **762**
Episodes: **832**
Phases: **1,778**



Episode length in days

Mean: **9.8**
Median: **5.0**

