

Patient outcomes

	✓	N	Result
Date ready for care to episode start			
Day of/day after	5910	6006	98.4%
Time in unstable phase			
Three days or less	1153	1228	93.9%

Symptoms & problems

Anticipatory Care

Pain PCPSS	5965	6496	91.8%
Pain SAS	4954	5425	91.3%
Fatigue	5324	5662	94.0%
Breathing problems	5781	6018	96.1%
Family/carer	5906	6272	94.2%

Responsive Care

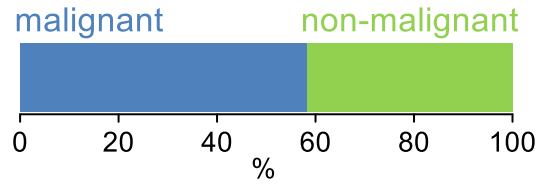
Pain PCPSS	848	1333	63.6%
Pain SAS	801	1227	65.3%
Fatigue	586	974	60.2%
Breathing problems	358	635	56.4%
Family/carer	399	705	56.6%

Casemix adjusted outcomes

Pain PCPSS	7829	0.10
Other symptoms	7794	0.27
Family/carer	6977	0.25
Psychological/spiritual	7800	0.21
Pain SAS	6652	0.36
Nausea	6642	0.23
Breathing problems	6653	0.29
Bowel problems	6637	0.36

✓ = Positive outcomes N = Total outcomes

Diagnosis

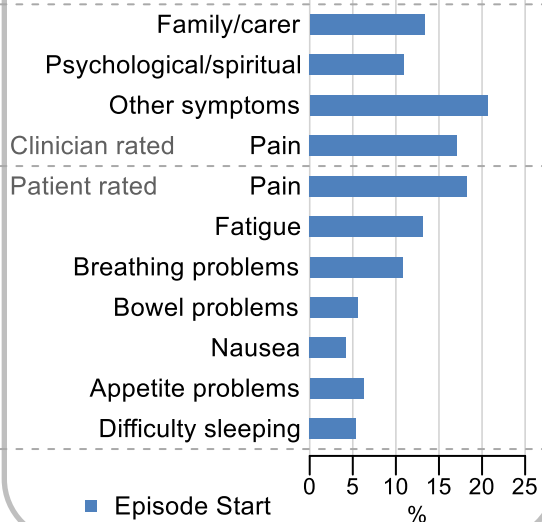


Age at episode start

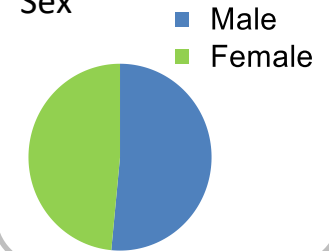
Mean: **75.2**
Median: **77.0**

Symptoms & problems

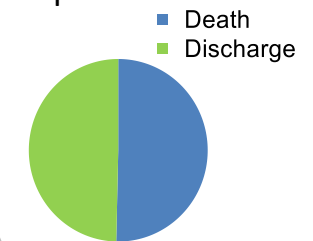
proportion of moderate / severe scores



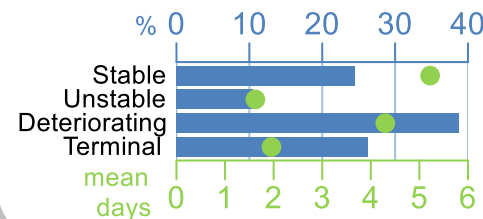
Sex



Episode end



Phase % and mean length in days

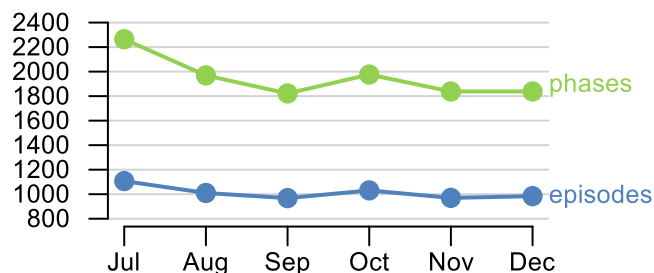


Phases per episode

1.9

Volume of data

Patients: **5,031**
Episodes: **6,136**
Phases: **11,707**



Episode length in days

Mean: **6.9**
Median: **3.0**

