

## Patient outcomes

	✓	N	Result
Date ready for care to episode start			
Day of/day after	3645	3689	98.8%
Time in unstable phase			
Three days or less	1012	1213	83.4%

## Symptoms & problems

### Anticipatory Care

Pain PCPSS	3488	3836	90.9%
Pain SAS	3129	3439	91.0%
Fatigue	2802	3063	91.5%
Breathing problems	3618	3806	95.1%
Family/carer	3771	4047	93.2%

### Responsive Care

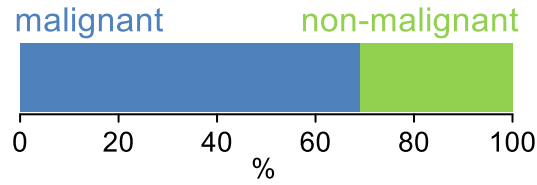
Pain PCPSS	687	1076	63.8%
Pain SAS	606	1091	55.5%
Fatigue	636	1449	43.9%
Breathing problems	355	709	50.1%
Family/carer	325	563	57.7%

## Casemix adjusted outcomes

Pain PCPSS	4912	0.05
Other symptoms	4768	0.25
Family/carer	4610	0.21
Psychological/spiritual	4754	0.21
Pain SAS	4530	0.25
Nausea	4504	0.22
Breathing problems	4515	0.29
Bowel problems	4511	0.24

✓ = Positive outcomes    N = Total outcomes

## Diagnosis

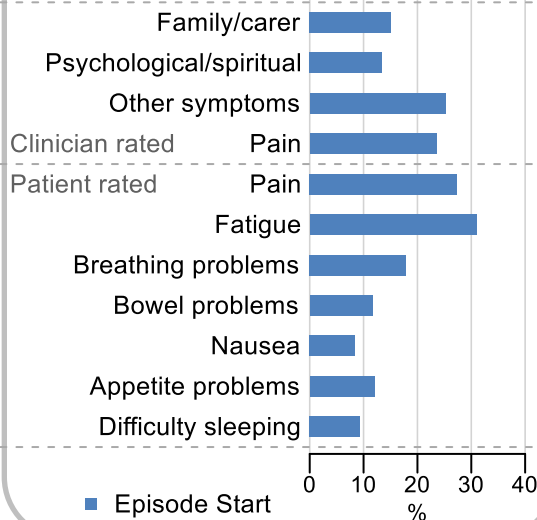


## Age at episode start

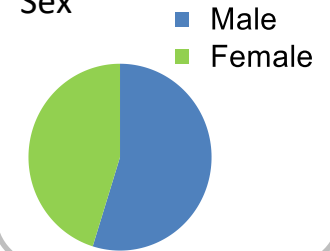
Mean: **73.0**  
Median: **74.0**

## Symptoms & problems

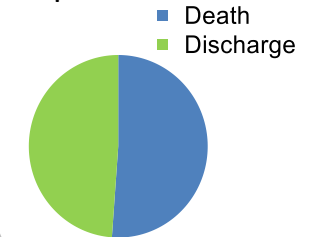
proportion of moderate / severe scores



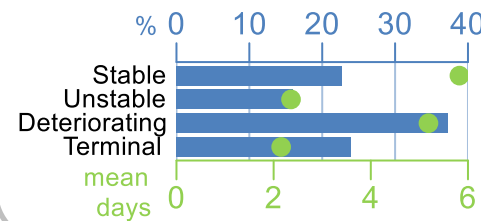
## Sex



## Episode end



## Phase % and mean length in days

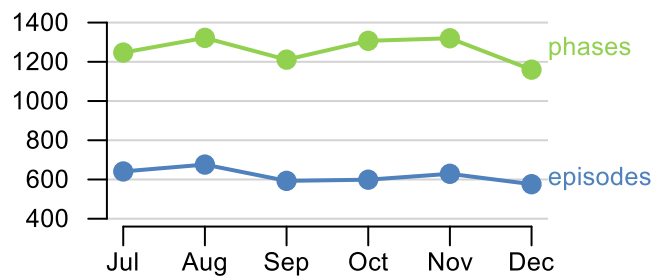


## Phases per episode

**2.0**

## Volume of data

Patients: **3,106**  
Episodes: **3,768**  
Phases: **7,567**



## Episode length in days

Mean: **8.3**  
Median: **5.0**

