

## Patient outcomes

	✓	N	Result
Date ready for care to episode start			
Day of/day after	2713	3045	89.1%
Time in unstable phase			
Three days or less	905	1157	78.2%

## Symptoms & problems

### Anticipatory Care

Pain PCPSS	5021	5985	83.9%
Pain SAS	4717	5646	83.5%
Fatigue	4111	5148	79.9%
Breathing problems	5578	6124	91.1%
Family/carer	4536	5575	81.4%

### Responsive Care

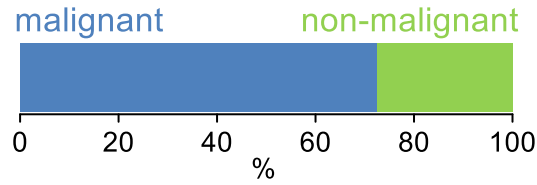
Pain PCPSS	829	1300	63.8%
Pain SAS	860	1480	58.1%
Fatigue	961	1852	51.9%
Breathing problems	455	849	53.6%
Family/carer	751	1364	55.1%

## Casemix adjusted outcomes

Pain PCPSS	7285	-0.09
Other symptoms	7281	-0.04
Family/carer	6939	-0.02
Psychological/spiritual	7120	0.00
Pain SAS	7126	-0.16
Nausea	6938	-0.09
Breathing problems	6973	-0.04
Bowel problems	6907	-0.10

✓ = Positive outcomes    N = Total outcomes

## Diagnosis

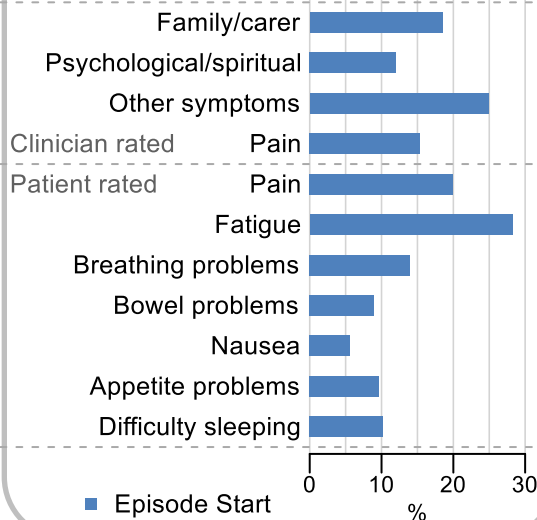


## Age at episode start

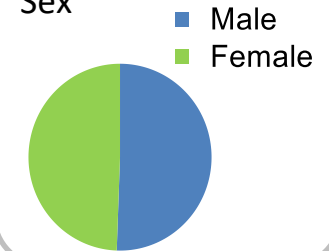
Mean: **74.2**  
Median: **76.0**

## Symptoms & problems

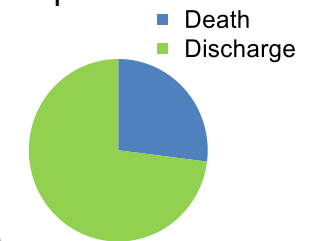
proportion of moderate / severe scores



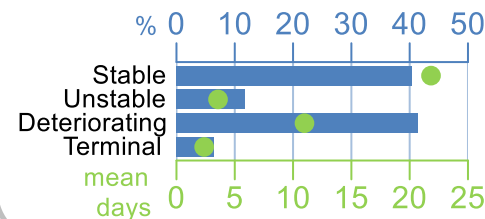
## Sex



## Episode end



## Phase % and mean length in days

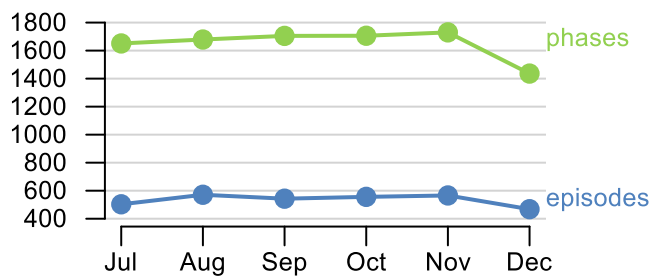


## Phases per episode

**2.4**

## Volume of data

Patients: **3,244**  
Episodes: **3,923**  
Phases: **9,907**



## Episode length in days

Mean: **41.5**  
Median: **31.0**

