

Patient outcomes

	✓	N	Result
Date ready for care to episode start			
Day of/day after	19000	19325	98.3%
Time in unstable phase			
Three days or less	5870	6525	90.0%

Symptoms & problems

Anticipatory Care

Pain PCPSS	21962	24007	91.5%
Pain SAS	19066	21063	90.5%
Fatigue	19640	21324	92.1%
Breathing problems	22434	23577	95.2%
Family/carer	21894	23463	93.3%

Responsive Care

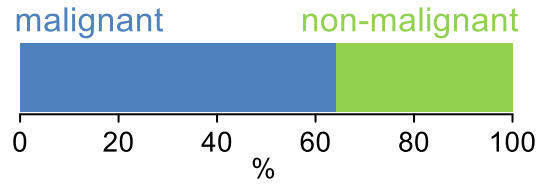
Pain PCPSS	3548	5472	64.8%
Pain SAS	3660	6072	60.3%
Fatigue	3296	5769	57.1%
Breathing problems	2000	3545	56.4%
Family/carer	1910	3258	58.6%

Casemix adjusted outcomes

Pain PCPSS	29479	0.10
Other symptoms	28829	0.26
Family/carer	26721	0.22
Psychological/spiritual	29275	0.21
Pain SAS	27135	0.30
Nausea	27100	0.20
Breathing problems	27122	0.30
Bowel problems	27090	0.31

✓ = Positive outcomes N = Total outcomes

Diagnosis

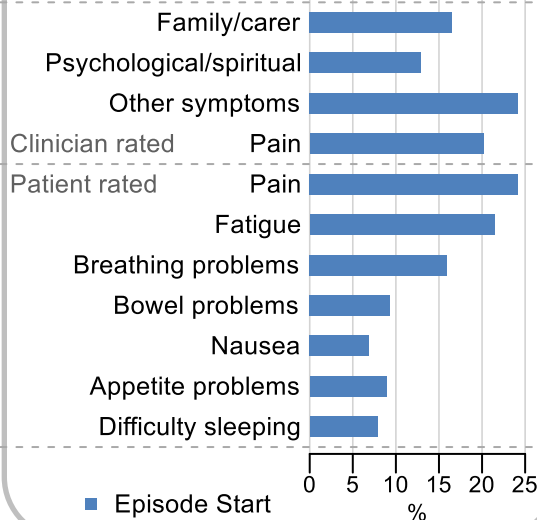


Age at episode start

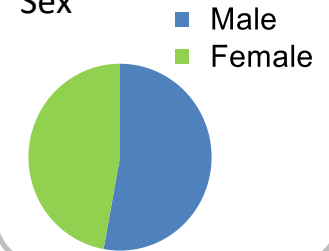
Mean: **74.4**
Median: **76.0**

Symptoms & problems

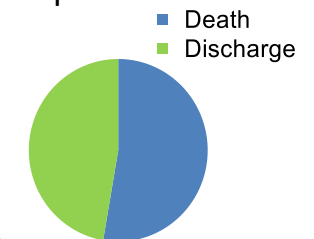
proportion of moderate / severe scores



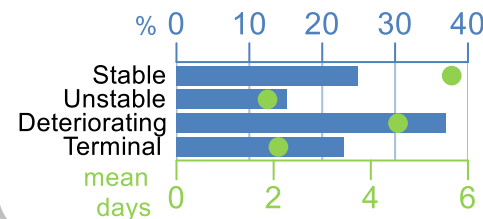
Sex



Episode end



Phase % and mean length in days



Phases per episode

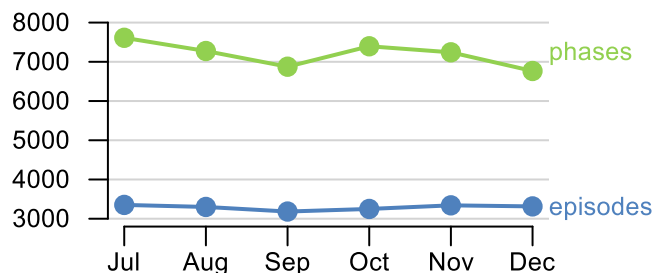
2.1

Volume of data

Patients: **17,136**

Episodes: **20,120**

Phases: **43,168**



Episode length in days

Mean: **8.3**

Median: **4.0**

