

## Patient outcomes

	✓	N	Result
Date ready for care to episode start			
Day of/day after	14160	16586	85.4%
Time in unstable phase			
Three days or less	4109	4693	87.6%

## Symptoms & problems

### Anticipatory Care

Pain PCPSS	20978	24545	85.5%
Pain SAS	20800	24344	85.4%
Fatigue	16538	20032	82.6%
Breathing problems	22433	24225	92.6%
Family/carer	18319	22325	82.1%

### Responsive Care

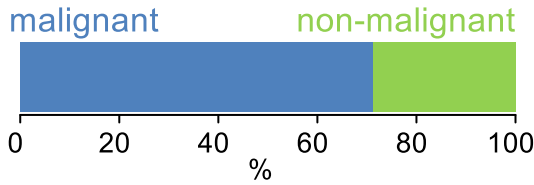
Pain PCPSS	2948	5031	58.6%
Pain SAS	3065	5507	55.7%
Fatigue	3599	8073	44.6%
Breathing problems	1553	3351	46.3%
Family/carer	2810	5676	49.5%

## Casemix adjusted outcomes

Pain PCPSS	29576	-0.05
Other symptoms	28107	-0.01
Family/carer	28001	0.00
Psychological/spiritual	28855	0.01
Pain SAS	29851	-0.06
Nausea	27850	-0.02
Breathing problems	27576	0.04
Bowel problems	27153	0.05

✓ = Positive outcomes    N = Total outcomes

## Diagnosis

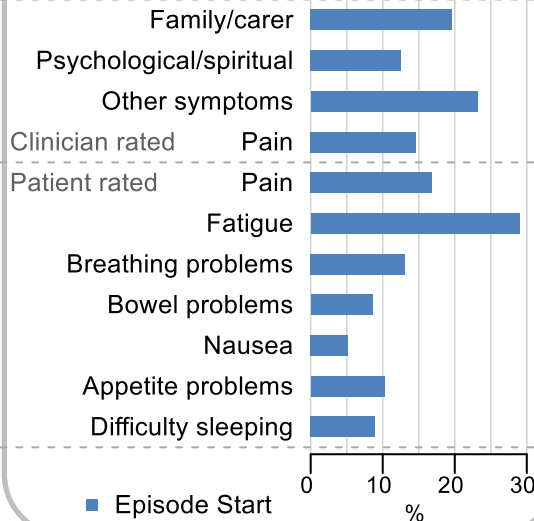


## Age at episode start

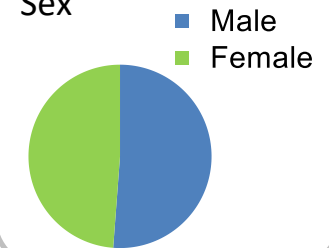
Mean: **73.9**  
Median: **76.0**

## Symptoms & problems

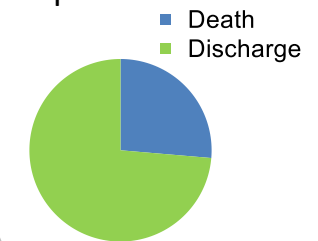
proportion of moderate / severe scores



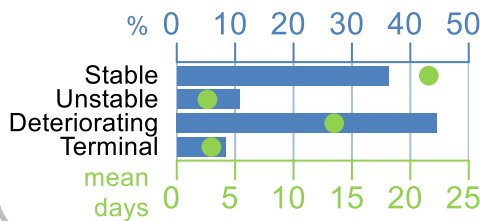
## Sex



## Episode end



## Phase % and mean length in days



## Episode length

in days  
Mean: **38.0**  
Median: **26.0**

## Volume of data

Patients: **15,705**  
Episodes: **19,560**  
Phases: **43,651**

