

Patient outcomes

	✓	N	Result
Date ready for care to episode start			
Day of/day after	18251	18571	98.3%
Time in unstable phase			
Three days or less	5982	6731	88.9%

Symptoms & problems

Anticipatory Care

Pain PCPSS	20947	22751	92.1%
Pain SAS	17109	18915	90.5%
Fatigue	17740	19208	92.4%
Breathing problems	20527	21508	95.4%
Family/carer	21404	22940	93.3%

Responsive Care

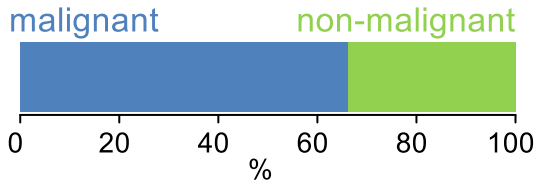
Pain PCPSS	3530	5564	63.4%
Pain SAS	3627	5929	61.2%
Fatigue	3258	5628	57.9%
Breathing problems	1850	3333	55.5%
Family/carer	1994	3529	56.5%

Casemix adjusted outcomes

Pain PCPSS	28315	0.10
Other symptoms	27799	0.24
Family/carer	26469	0.20
Psychological/spiritual	28235	0.20
Pain SAS	24844	0.33
Nausea	24833	0.21
Breathing problems	24841	0.31
Bowel problems	24826	0.32

✓ = Positive outcomes N = Total outcomes

Diagnosis

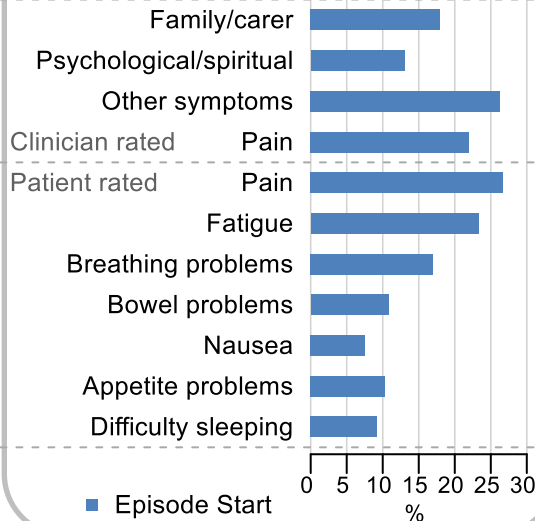


Age at episode start

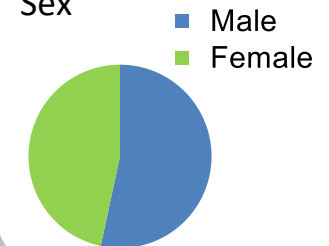
Mean: **74.1**
Median: **76.0**

Symptoms & problems

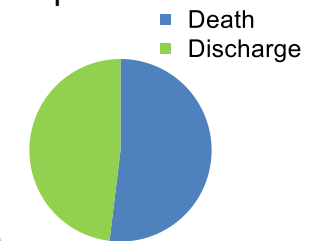
proportion of moderate / severe scores



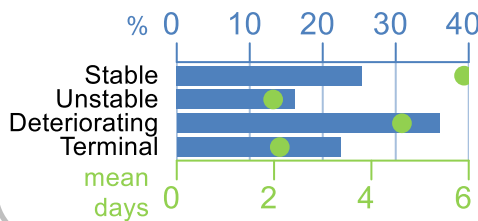
Sex



Episode end



Phase % and mean length in days



Episode length

in days
Mean: **8.5**
Median: **5.0**

Volume of data

Patients: **16,154**
Episodes: **19,405**
Phases: **41,535**

