

Patient outcomes

	✓	N	Result
Date ready for care to episode start			
Day of/day after	2841	2871	99.0%
Time in unstable phase			
Three days or less	369	397	92.9%

Symptoms & problems

Anticipatory Care

Pain PCPSS	5900	6825	86.4%
Pain SAS	5588	6585	84.9%
Fatigue	4155	5293	78.5%
Breathing problems	6636	7135	93.0%
Family/carer	5736	6707	85.5%

Responsive Care

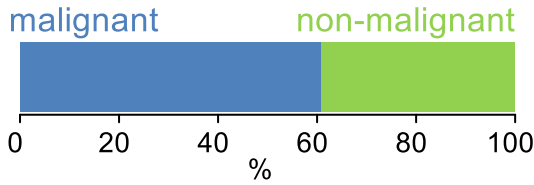
Pain PCPSS	864	1157	74.7%
Pain SAS	946	1381	68.5%
Fatigue	1261	2662	47.4%
Breathing problems	468	824	56.8%
Family/carer	804	1175	68.4%

Casemix adjusted outcomes

Pain PCPSS	7982	0.03
Other symptoms	7159	0.01
Family/carer	7882	0.12
Psychological/spiritual	7976	0.03
Pain SAS	7966	0.15
Nausea	7955	0.13
Breathing problems	7959	0.15
Bowel problems	7943	0.19

✓ = Positive outcomes N = Total outcomes

Diagnosis

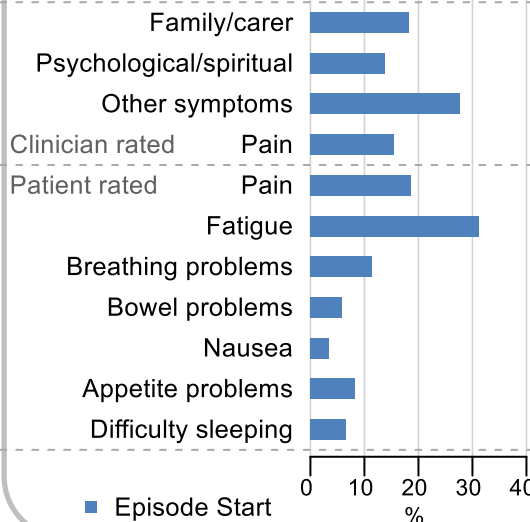


Age at episode start

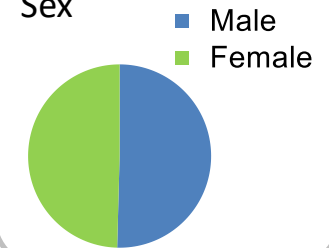
Mean: **75.0**
Median: **77.0**

Symptoms & problems

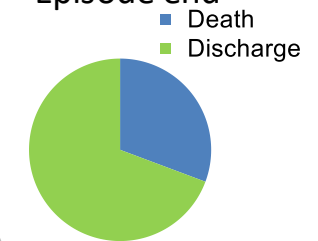
proportion of moderate / severe scores



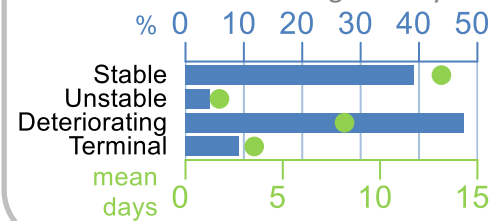
Sex



Episode end



Phase % and mean length in days

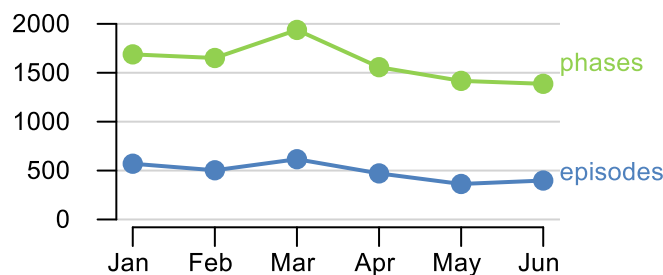


Phases per episode

2.7

Volume of data

Patients: **2,601**
Episodes: **3,268**
Phases: **9,638**



Episode length in days

Mean: **28.5**
Median: **18.0**

