

## Patient outcomes

	✓	N	Result
Date ready for care to episode start			
Day of/day after	1761	1966	89.6%
Time in unstable phase			
Three days or less	444	512	86.7%

## Symptoms & problems

### Anticipatory Care

Pain PCPSS	1794	2133	84.1%
Pain SAS	1538	1855	82.9%
Fatigue	1264	1584	79.8%
Breathing problems	1839	2030	90.6%
Family/carer	1714	2084	82.2%

### Responsive Care

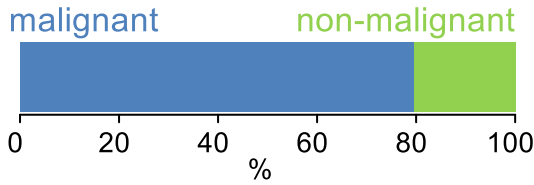
Pain PCPSS	290	580	50.0%
Pain SAS	286	619	46.2%
Fatigue	325	841	38.6%
Breathing problems	161	398	40.5%
Family/carer	240	542	44.3%

## Casemix adjusted outcomes

Pain PCPSS	2713	-0.15
Other symptoms	2710	-0.10
Family/carer	2626	-0.04
Psychological/spiritual	2691	-0.05
Pain SAS	2474	-0.37
Nausea	2424	-0.13
Breathing problems	2428	-0.16
Bowel problems	2419	-0.08

✓ = Positive outcomes    N = Total outcomes

## Diagnosis

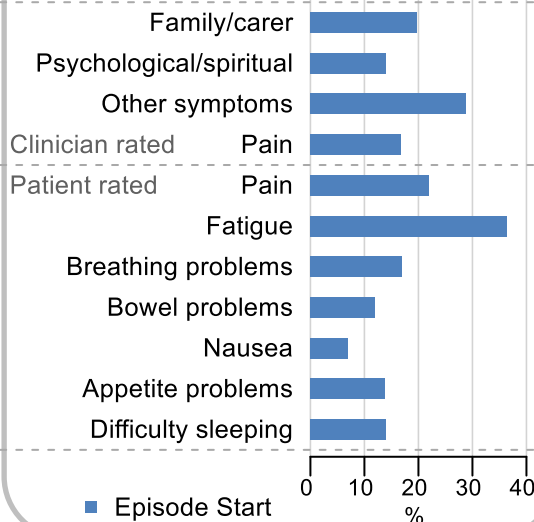


## Age at episode start

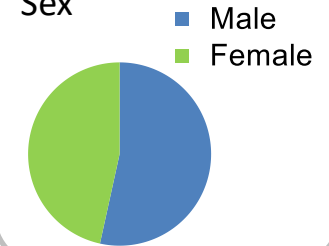
Mean: **72.7**  
Median: **74.0**

## Symptoms & problems

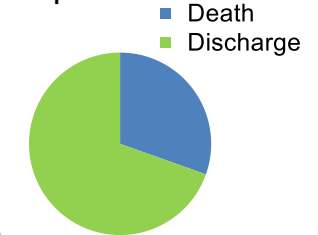
proportion of moderate / severe scores



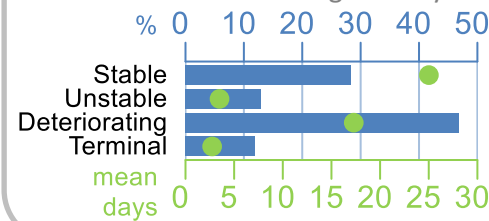
## Sex



## Episode end



## Phase % and mean length in days

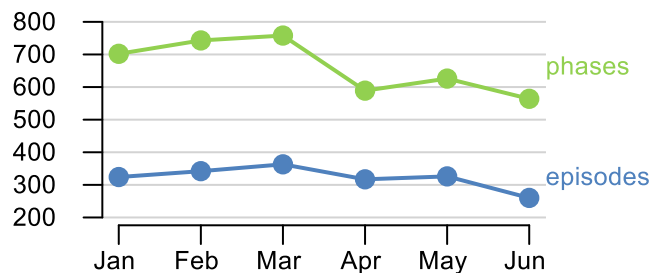


## Phases per episode

**1.8**

## Volume of data

Patients: **1,843**  
Episodes: **2,170**  
Phases: **3,982**



## Episode length in days

Mean: **37.7**  
Median: **24.0**

