

## Patient outcomes

	N	Result
Date ready for care to episode start	4969	5982 83.1%
Time in unstable phase	1930	2076 93.0%

## Symptoms & problems

### Anticipatory Care

Pain PCPSS	6881	7941	86.7%
Pain SAS	7660	8727	87.8%
Fatigue	6294	7158	87.9%
Breathing problems	6966	7463	93.3%
Family/carer	5361	6595	81.3%

### Responsive Care

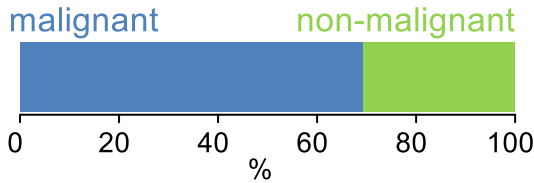
Pain PCPSS	802	1424	56.3%
Pain SAS	850	1454	58.5%
Fatigue	786	1529	51.4%
Breathing problems	358	727	49.2%
Family/carer	820	1869	43.9%

## Casemix adjusted outcomes

Pain PCPSS	9365	-0.03
Other symptoms	9045	0.03
Family/carer	8464	-0.02
Psychological/spiritual	8923	0.04
Pain SAS	10181	0.01
Nausea	8489	-0.05
Breathing problems	8190	0.04
Bowel problems	7850	0.15

✓ = Positive outcomes N = Total outcomes

## Diagnosis

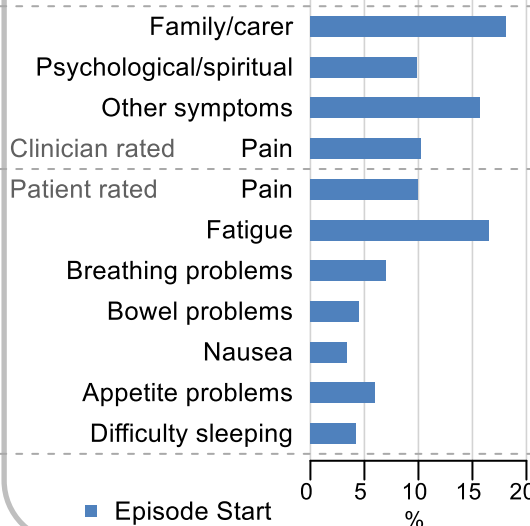


## Age at episode start

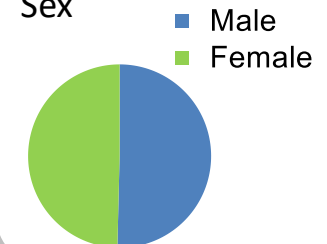
Mean: **74.0**  
Median: **76.0**

## Symptoms & problems

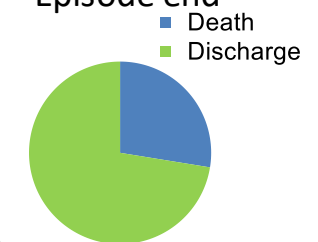
proportion of moderate / severe scores



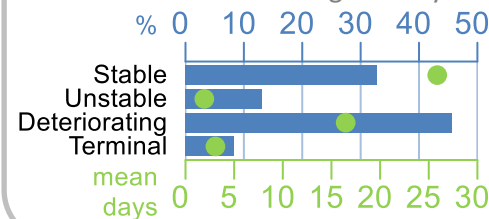
## Sex



## Episode end



## Phase % and mean length in days

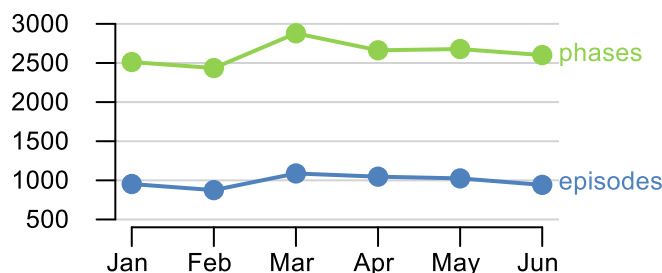


## Phases per episode

**2.1**

## Volume of data

Patients: **5,535**  
Episodes: **7,136**  
Phases: **15,767**



## Episode length in days

Mean: **41.0**  
Median: **30.0**

