

Patient outcomes

	✓	N	Result
Date ready for care to episode start			
Day of/day after	2484	2578	96.4%
Time in unstable phase			
Three days or less	549	575	95.5%

Symptoms & problems

Anticipatory Care

Pain PCPSS	2673	2946	90.7%
Pain SAS	2435	2730	89.2%
Fatigue	2564	2818	91.0%
Breathing problems	2963	3129	94.7%
Family/carer	2220	2426	91.5%

Responsive Care

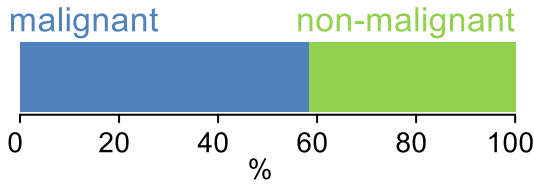
Pain PCPSS	487	707	68.9%
Pain SAS	596	916	65.1%
Fatigue	505	825	61.2%
Breathing problems	305	517	59.0%
Family/carer	263	379	69.4%

Casemix adjusted outcomes

Pain PCPSS	3653	0.13
Other symptoms	3268	0.23
Family/carer	2805	0.22
Psychological/spiritual	3647	0.21
Pain SAS	3646	0.32
Nausea	3647	0.21
Breathing problems	3646	0.31
Bowel problems	3643	0.27

✓ = Positive outcomes N = Total outcomes

Diagnosis

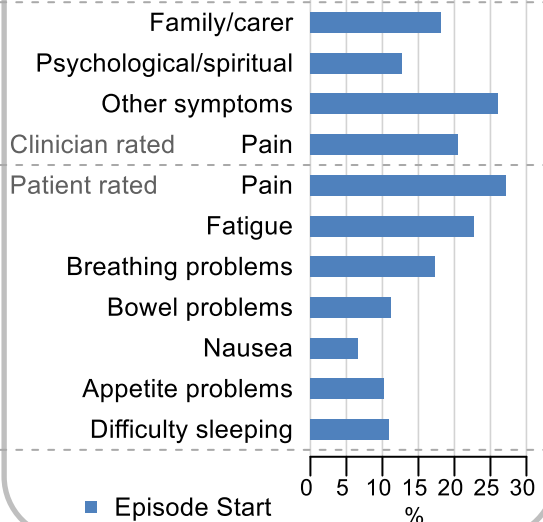


Age at episode start

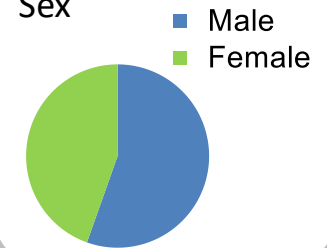
Mean: **73.9**
Median: **76.0**

Symptoms & problems

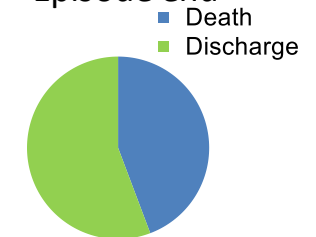
proportion of moderate / severe scores



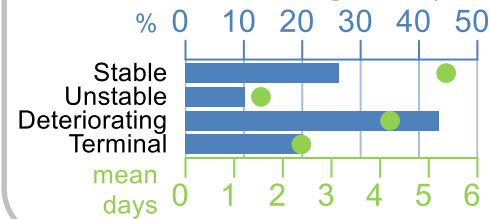
Sex



Episode end



Phase % and mean length in days

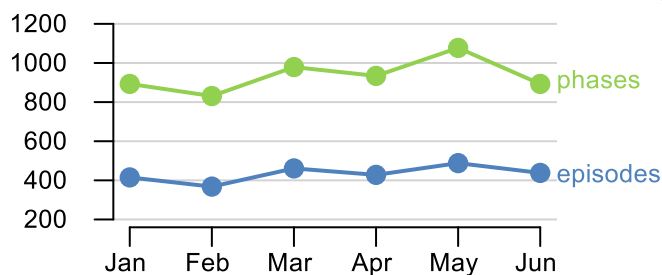


Phases per episode

2.1

Volume of data

Patients: **2,289**
Episodes: **2,633**
Phases: **5,607**



Episode length in days

Mean: **8.2**
Median: **4.0**

