

Patient outcomes

	✓	N	Result
Date ready for care to episode start			
Day of/day after	1300	1347	96.5%
Time in unstable phase			
Three days or less	238	266	89.5%

Symptoms & problems

Anticipatory Care

Pain PCPSS	1238	1358	91.2%
Pain SAS	1031	1155	89.3%
Fatigue	1064	1170	90.9%
Breathing problems	1261	1342	94.0%
Family/carer	1412	1493	94.6%

Responsive Care

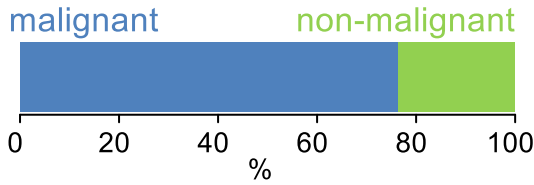
Pain PCPSS	201	313	64.2%
Pain SAS	237	437	54.2%
Fatigue	254	419	60.6%
Breathing problems	122	246	49.6%
Family/carer	93	128	72.7%

Casemix adjusted outcomes

Pain PCPSS	1671	0.02
Other symptoms	1668	0.20
Family/carer	1621	0.20
Psychological/spiritual	1661	0.20
Pain SAS	1592	0.14
Nausea	1581	0.20
Breathing problems	1588	0.16
Bowel problems	1584	0.21

✓ = Positive outcomes N = Total outcomes

Diagnosis

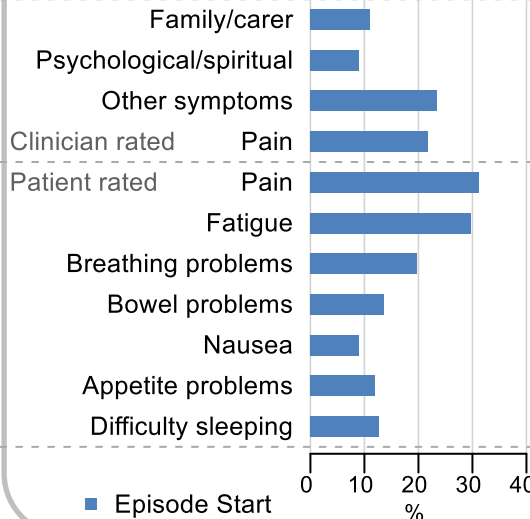


Age at episode start

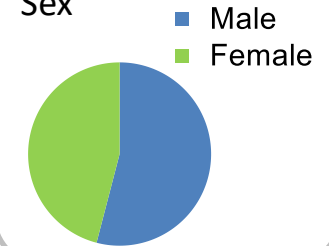
Mean: **72.8**
Median: **75.0**

Symptoms & problems

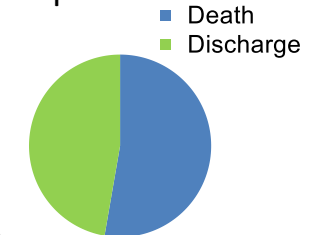
proportion of moderate / severe scores



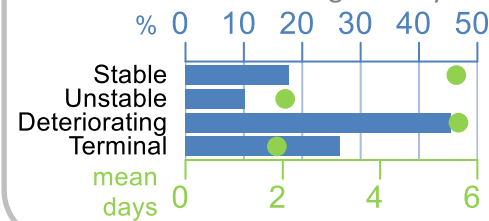
Sex



Episode end



Phase % and mean length in days

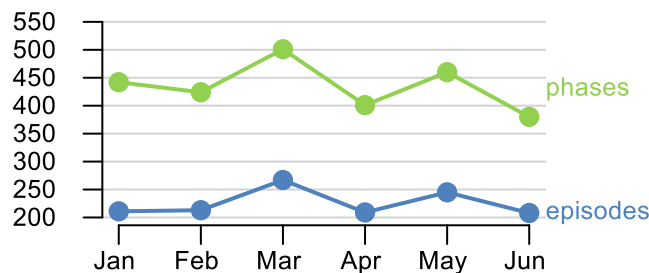


Phases per episode

1.9

Volume of data

Patients: **1,062**
Episodes: **1,373**
Phases: **2,608**



Episode length in days

Mean: **8.1**
Median: **4.0**

