

## Patient outcomes

	✓	N	Result
Date ready for care to episode start			
Day of/day after	5204	5244	99.2%
Time in unstable phase			
Three days or less	1203	1301	92.5%

## Symptoms & problems

### Anticipatory Care

Pain PCPSS	5403	5906	91.5%
Pain SAS	4294	4733	90.7%
Fatigue	4574	4902	93.3%
Breathing problems	5074	5322	95.3%
Family/carer	5403	5802	93.1%

### Responsive Care

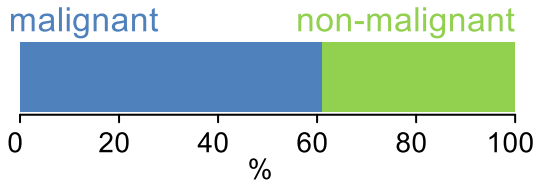
Pain PCPSS	847	1362	62.2%
Pain SAS	777	1214	64.0%
Fatigue	621	1064	58.4%
Breathing problems	384	646	59.4%
Family/carer	442	823	53.7%

## Casemix adjusted outcomes

Pain PCPSS	7268	0.09
Other symptoms	7219	0.22
Family/carer	6625	0.22
Psychological/spiritual	7230	0.18
Pain SAS	5947	0.34
Nausea	5972	0.22
Breathing problems	5968	0.29
Bowel problems	5967	0.36

✓ = Positive outcomes    N = Total outcomes

## Diagnosis

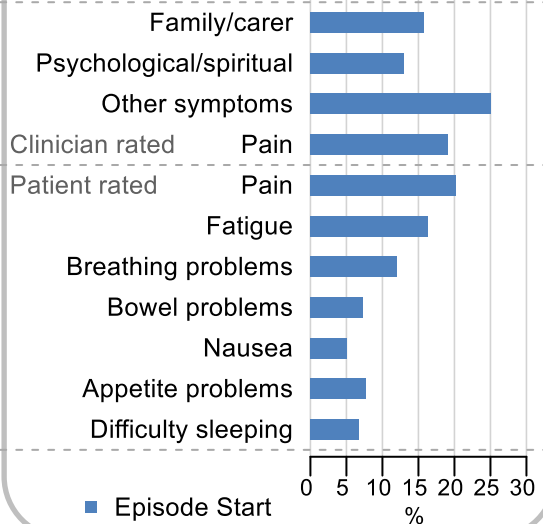


## Age at episode start

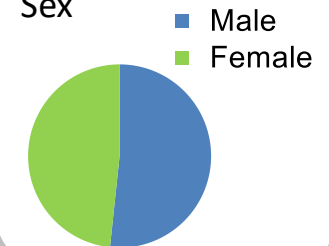
Mean: **75.3**  
Median: **77.0**

## Symptoms & problems

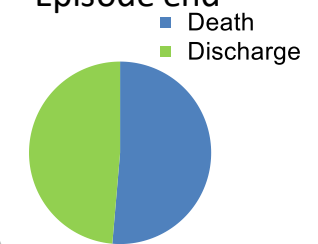
proportion of moderate / severe scores



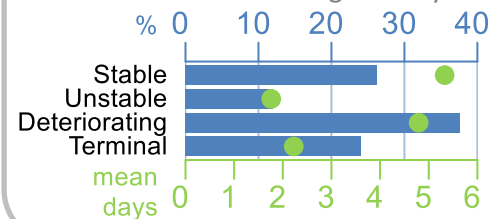
## Sex



## Episode end



## Phase % and mean length in days



## Phases per episode

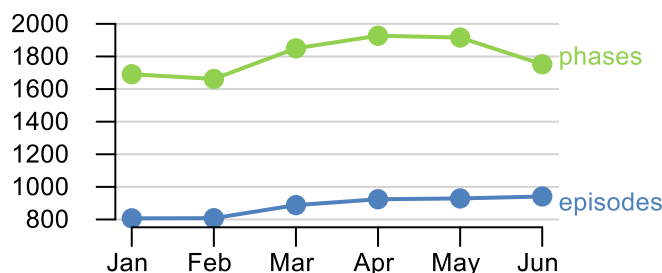
**2.0**

## Volume of data

Patients: **4,319**

Episodes: **5,357**

Phases: **10,798**



## Episode length in days

Mean: **8.0**

Median: **4.0**

