

Patient outcomes

	✓	N	Result
Date ready for care to episode start			
Day of/day after	4001	4071	98.3%
Time in unstable phase			
Three days or less	2384	2747	86.8%

Symptoms & problems

Anticipatory Care

Pain PCPSS	6459	6936	93.1%
Pain SAS	5323	5816	91.5%
Fatigue	5467	5902	92.6%
Breathing problems	6237	6514	95.7%
Family/carer	6766	7223	93.7%

Responsive Care

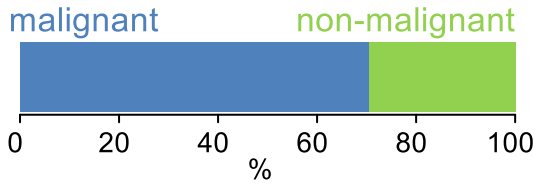
Pain PCPSS	1033	1591	64.9%
Pain SAS	1089	1739	62.6%
Fatigue	1022	1650	61.9%
Breathing problems	609	1039	58.6%
Family/carer	679	1205	56.3%

Casemix adjusted outcomes

Pain PCPSS	8527	0.15
Other symptoms	8530	0.26
Family/carer	8428	0.20
Psychological/spiritual	8521	0.23
Pain SAS	7555	0.43
Nausea	7554	0.21
Breathing problems	7553	0.36
Bowel problems	7548	0.38

✓ = Positive outcomes N = Total outcomes

Diagnosis

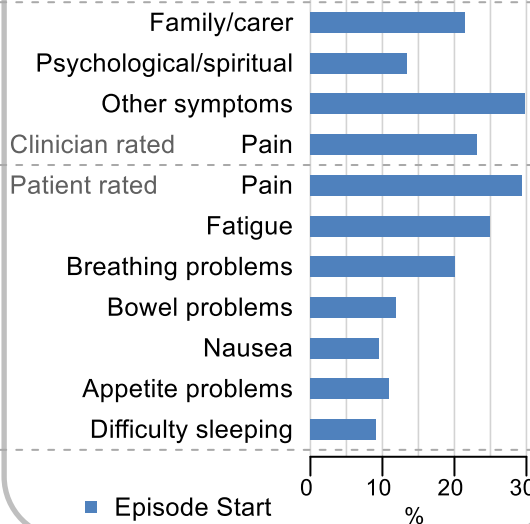


Age at episode start

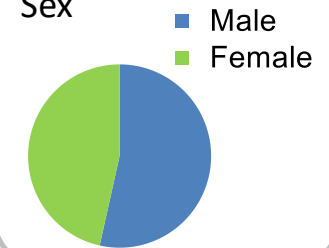
Mean: **75.0**
Median: **76.0**

Symptoms & problems

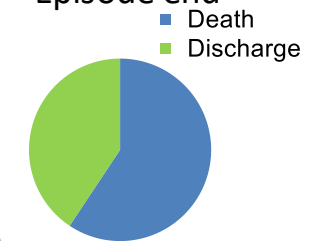
proportion of moderate / severe scores



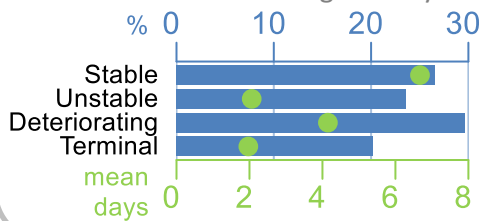
Sex



Episode end



Phase % and mean length in days

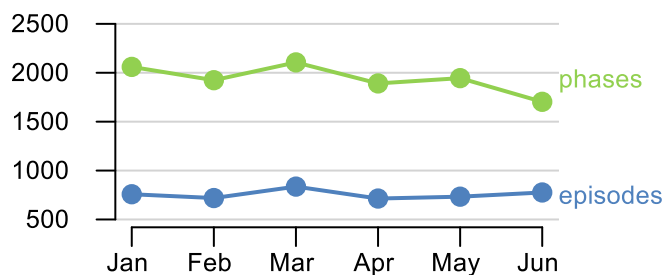


Phases per episode

2.5

Volume of data

Patients: **4,108**
Episodes: **4,587**
Phases: **11,629**



Episode length in days

Mean: **10.0**
Median: **6.0**

