

Patient outcomes

	✓	N	Result
Date ready for care to episode start			
Day of/day after	3422	3441	99.4%
Time in unstable phase			
Three days or less	401	416	96.4%

Symptoms & problems

Anticipatory Care

Pain PCPSS	6859	7805	87.9%
Pain SAS	6510	7529	86.5%
Fatigue	5017	6182	81.2%
Breathing problems	7595	8114	93.6%
Family/carer	6657	7664	86.9%

Responsive Care

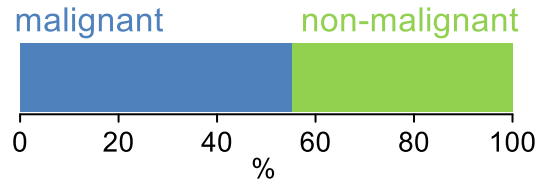
Pain PCPSS	949	1226	77.4%
Pain SAS	1031	1501	68.7%
Fatigue	1265	2829	44.7%
Breathing problems	491	900	54.6%
Family/carer	874	1255	69.6%

Casemix adjusted outcomes

Pain PCPSS	9031	0.07
Other symptoms	7646	0.04
Family/carer	8919	0.15
Psychological/spiritual	9030	0.07
Pain SAS	9030	0.22
Nausea	9016	0.12
Breathing problems	9014	0.19
Bowel problems	9011	0.23

✓ = Positive outcomes N = Total outcomes

Diagnosis

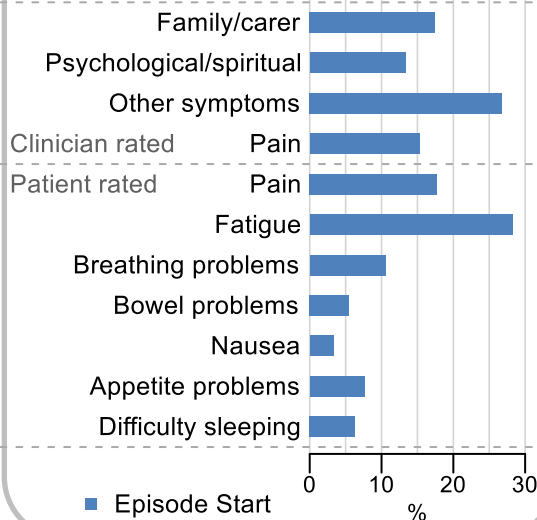


Age at episode start

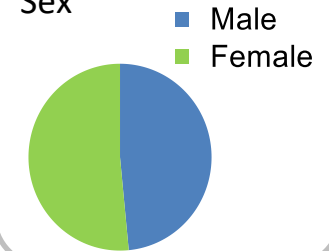
Mean: **76.6**
Median: **79.0**

Symptoms & problems

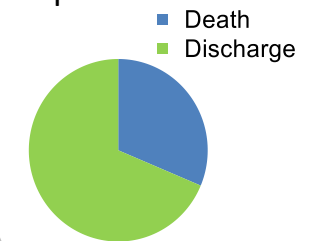
proportion of moderate / severe scores



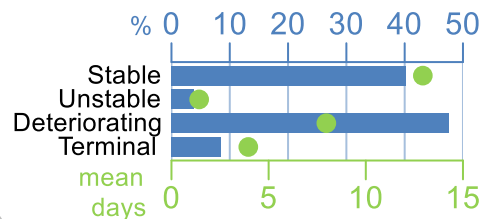
Sex



Episode end



Phase % and mean length in days

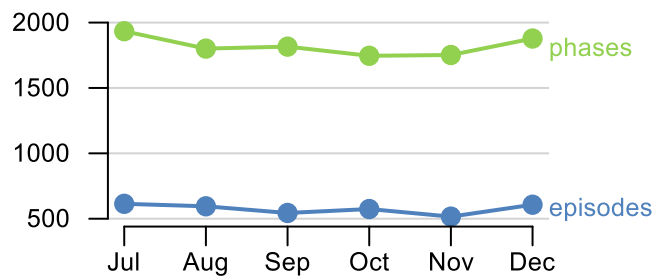


Phases per episode

2.5

Volume of data

Patients: **3,054**
Episodes: **3,858**
Phases: **10,927**



Episode length in days

Mean: **27.3**
Median: **17.0**

