

## Patient outcomes

	✓	N	Result
Date ready for care to episode start			
Day of/day after	2044	2197	93.0%
Time in unstable phase			
Three days or less	474	562	84.3%

## Symptoms & problems

### Anticipatory Care

Pain PCPSS	1961	2371	82.7%
Pain SAS	1757	2135	82.3%
Fatigue	1525	1877	81.2%
Breathing problems	2125	2315	91.8%
Family/carer	1907	2328	81.9%

### Responsive Care

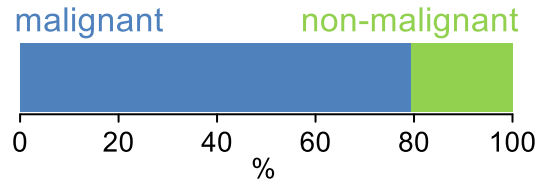
Pain PCPSS	336	671	50.1%
Pain SAS	309	672	46.0%
Fatigue	338	887	38.1%
Breathing problems	181	436	41.5%
Family/carer	268	595	45.0%

## Casemix adjusted outcomes

Pain PCPSS	3042	-0.18
Other symptoms	3032	-0.10
Family/carer	2923	-0.03
Psychological/spiritual	3018	-0.04
Pain SAS	2807	-0.40
Nausea	2747	-0.08
Breathing problems	2751	-0.09
Bowel problems	2750	-0.05

✓ = Positive outcomes    N = Total outcomes

## Diagnosis

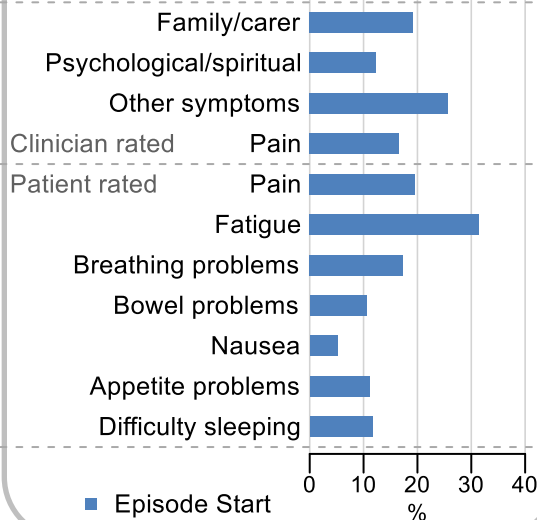


## Age at episode start

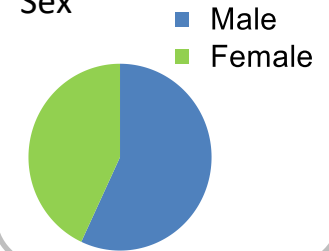
Mean: **73.4**  
Median: **74.0**

## Symptoms & problems

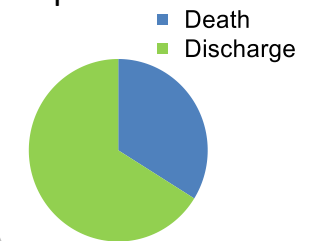
proportion of moderate / severe scores



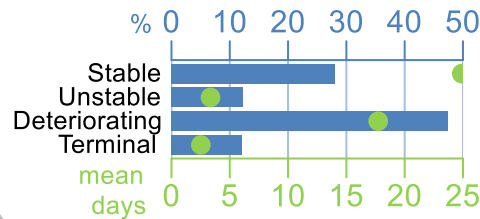
## Sex



## Episode end



## Phase % and mean length in days

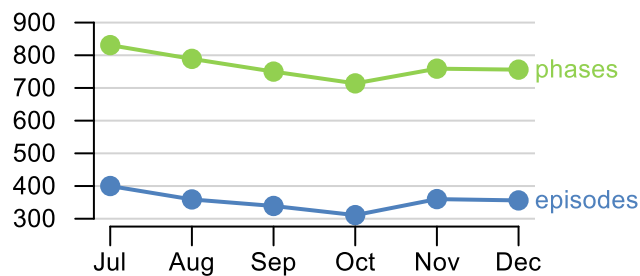


## Phases per episode

**1.9**

## Volume of data

Patients: **2,028**  
Episodes: **2,399**  
Phases: **4,599**



## Episode length in days

Mean: **36.9**  
Median: **23.0**

