

## Patient outcomes

	✓	N	Result
Date ready for care to episode start			
Day of/day after	4805	5698	84.3%
Time in unstable phase			
Three days or less	2094	2249	93.1%

## Symptoms & problems

### Anticipatory Care

Pain PCPSS	6657	7681	86.7%
Pain SAS	7676	8745	87.8%
Fatigue	6231	7070	88.1%
Breathing problems	7076	7496	94.4%
Family/carer	5272	6569	80.3%

### Responsive Care

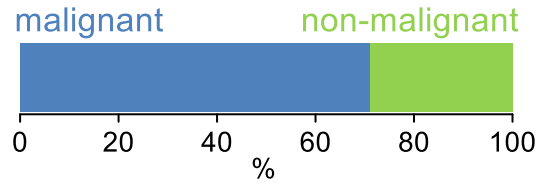
Pain PCPSS	799	1455	54.9%
Pain SAS	822	1422	57.8%
Fatigue	770	1478	52.1%
Breathing problems	328	623	52.6%
Family/carer	920	1940	47.4%

## Casemix adjusted outcomes

Pain PCPSS	9136	-0.05
Other symptoms	8723	0.02
Family/carer	8509	-0.03
Psychological/spiritual	8546	0.05
Pain SAS	10167	-0.06
Nausea	8373	-0.05
Breathing problems	8119	0.10
Bowel problems	7823	0.14

✓ = Positive outcomes    N = Total outcomes

## Diagnosis

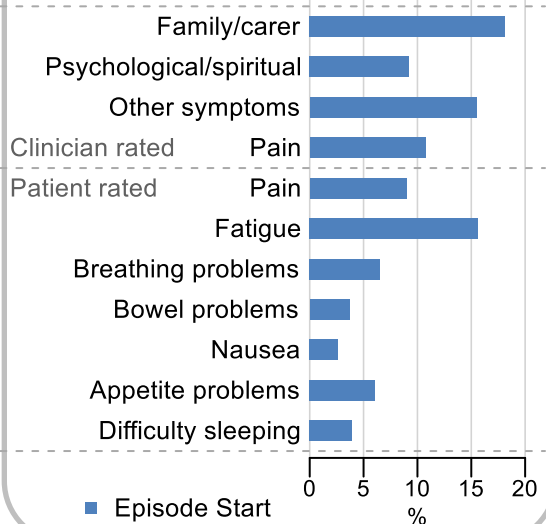


## Age at episode start

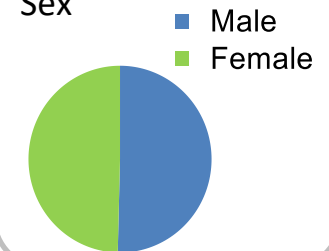
Mean: **74.0**  
Median: **76.0**

## Symptoms & problems

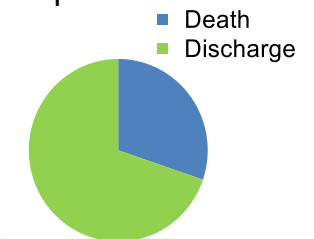
proportion of moderate / severe scores



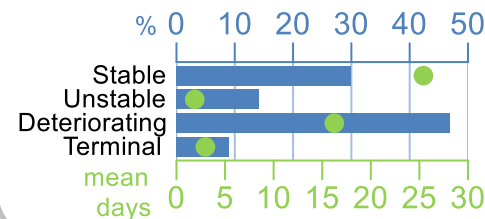
## Sex



## Episode end



## Phase % and mean length in days

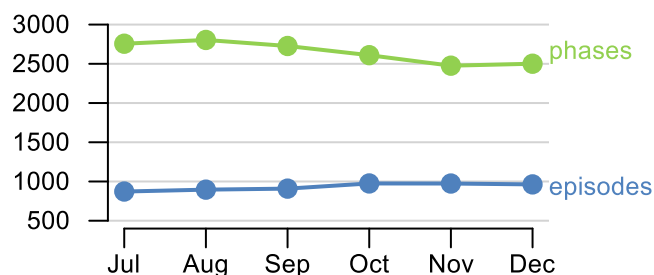


## Phases per episode

**2.3**

## Volume of data

Patients: **5,206**  
Episodes: **6,784**  
Phases: **15,874**



## Episode length in days

Mean: **40.8**  
Median: **30.0**

