

Patient outcomes

	✓	N	Result
Date ready for care to episode start			
Day of/day after	2029	2080	97.5%
Time in unstable phase			
Three days or less	651	681	95.6%

Symptoms & problems

Anticipatory Care

Pain PCPSS	2377	2641	90.0%
Pain SAS	2301	2577	89.3%
Fatigue	2392	2597	92.1%
Breathing problems	2694	2856	94.3%
Family/carer	2084	2271	91.8%

Responsive Care

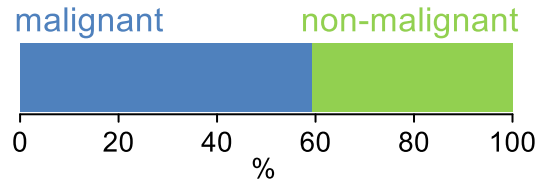
Pain PCPSS	461	673	68.5%
Pain SAS	459	727	63.1%
Fatigue	425	707	60.1%
Breathing problems	275	450	61.1%
Family/carer	215	347	62.0%

Casemix adjusted outcomes

Pain PCPSS	3314	0.09
Other symptoms	3011	0.20
Family/carer	2618	0.20
Psychological/spiritual	3310	0.22
Pain SAS	3304	0.26
Nausea	3307	0.16
Breathing problems	3306	0.28
Bowel problems	3301	0.27

✓ = Positive outcomes N = Total outcomes

Diagnosis

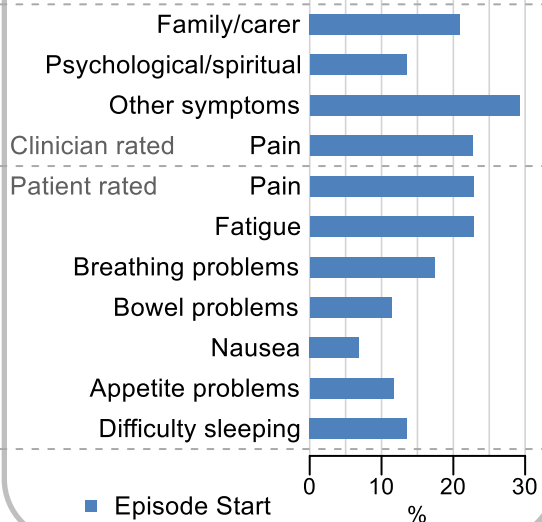


Age at episode start

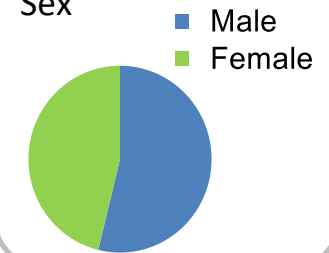
Mean: **74.8**
Median: **77.0**

Symptoms & problems

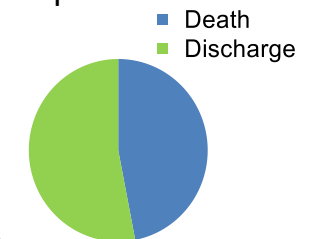
proportion of moderate / severe scores



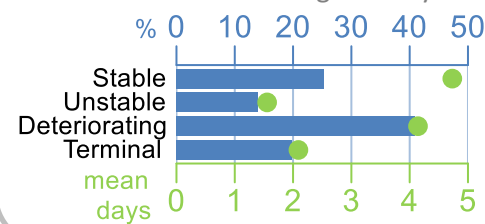
Sex



Episode end



Phase % and mean length in days

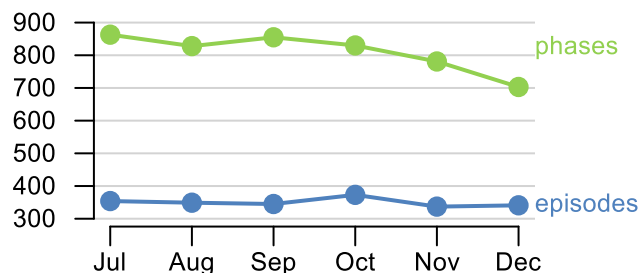


Phases per episode

2.3

Volume of data

Patients: **1,828**
Episodes: **2,123**
Phases: **4,860**



Episode length in days

Mean: **7.9**
Median: **4.0**

