

Patient outcomes

	✓	N	Result
Date ready for care to episode start			
Day of/day after	4558	4602	99.0%
Time in unstable phase			
Three days or less	1110	1206	92.0%

Symptoms & problems

Anticipatory Care

Pain PCPSS	4759	5165	92.1%
Pain SAS	3770	4143	91.0%
Fatigue	3865	4162	92.9%
Breathing problems	4386	4615	95.0%
Family/carer	5181	5478	94.6%

Responsive Care

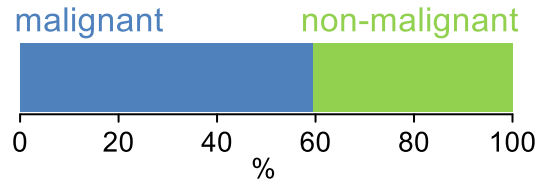
Pain PCPSS	733	1200	61.1%
Pain SAS	646	1054	61.3%
Fatigue	576	1041	55.3%
Breathing problems	316	588	53.7%
Family/carer	334	575	58.1%

Casemix adjusted outcomes

Pain PCPSS	6365	0.10
Other symptoms	6263	0.21
Family/carer	6053	0.26
Psychological/spiritual	6344	0.18
Pain SAS	5197	0.33
Nausea	5212	0.20
Breathing problems	5203	0.26
Bowel problems	5201	0.32

✓ = Positive outcomes N = Total outcomes

Diagnosis

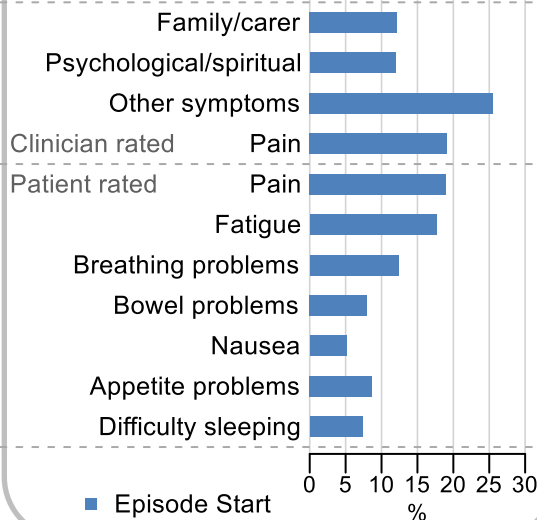


Age at episode start

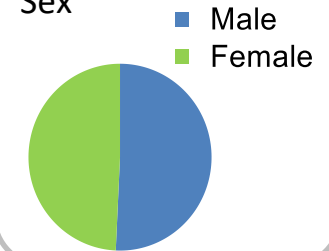
Mean: **76.4**
Median: **79.0**

Symptoms & problems

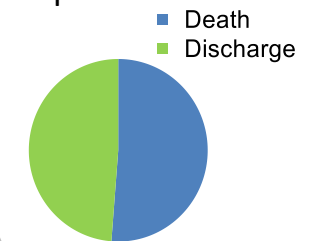
proportion of moderate / severe scores



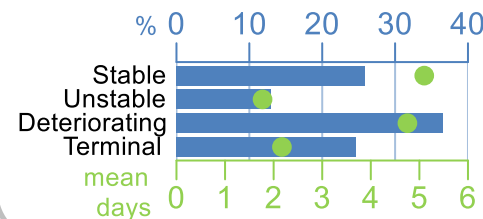
Sex



Episode end



Phase % and mean length in days

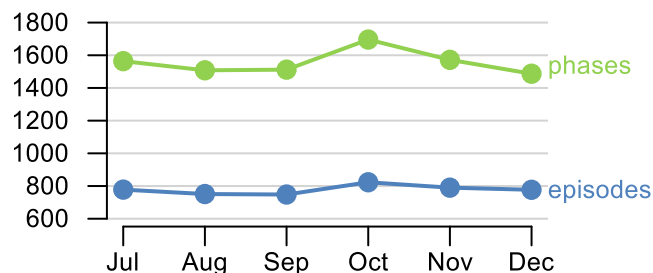


Phases per episode

2.0

Volume of data

Patients: **3,792**
Episodes: **4,712**
Phases: **9,340**



Episode length in days

Mean: **7.7**
Median: **4.0**

