

Patient outcomes

	✓	N	Result
Date ready for care to episode start			
Day of/day after	999	1034	96.6%
Time in unstable phase			
Three days or less	306	324	94.4%

Symptoms & problems

Anticipatory Care

Pain PCPSS	1210	1335	90.6%
Pain SAS	1003	1159	86.5%
Fatigue	1039	1182	87.9%
Breathing problems	1276	1368	93.3%
Family/carer	1410	1494	94.4%

Responsive Care

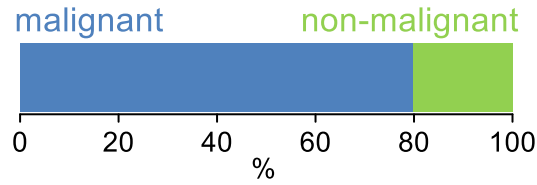
Pain PCPSS	221	317	69.7%
Pain SAS	290	474	61.2%
Fatigue	293	445	65.8%
Breathing problems	159	263	60.5%
Family/carer	85	119	71.4%

Casemix adjusted outcomes

Pain PCPSS	1652	0.00
Other symptoms	1649	0.22
Family/carer	1613	0.19
Psychological/spiritual	1652	0.19
Pain SAS	1633	0.08
Nausea	1630	0.19
Breathing problems	1631	0.27
Bowel problems	1628	0.27

✓ = Positive outcomes N = Total outcomes

Diagnosis

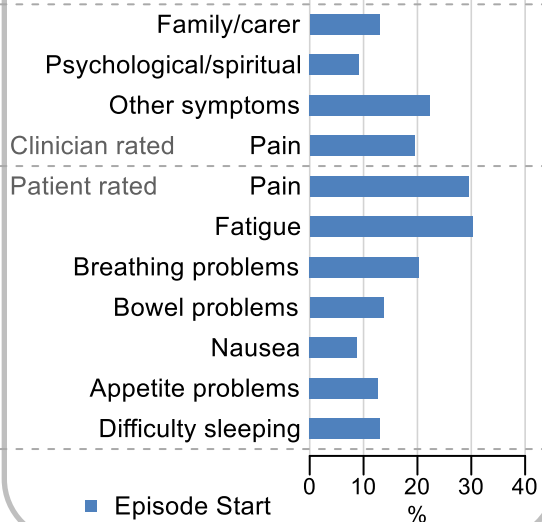


Age at episode start

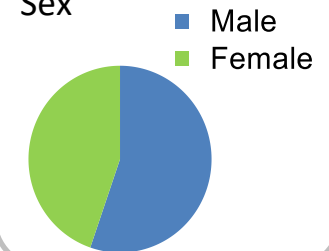
Mean: **71.9**
Median: **73.0**

Symptoms & problems

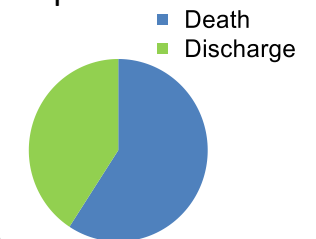
proportion of moderate / severe scores



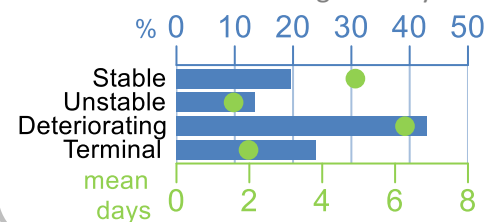
Sex



Episode end



Phase % and mean length in days

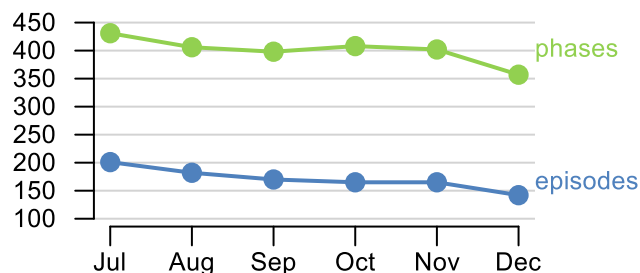


Phases per episode

2.3

Volume of data

Patients: **874**
Episodes: **1,063**
Phases: **2,402**



Episode length in days

Mean: **9.6**
Median: **5.0**

