

## Patient outcomes

	✓	N	Result
Date ready for care to episode start			
Day of/day after	4884	4957	98.5%
Time in unstable phase			
Three days or less	1535	1766	86.9%

## Symptoms & problems

### Anticipatory Care

Pain PCPSS	4752	5102	93.1%
Pain SAS	3860	4218	91.5%
Fatigue	3917	4231	92.6%
Breathing problems	4740	4916	96.4%
Family/carer	5198	5479	94.9%

### Responsive Care

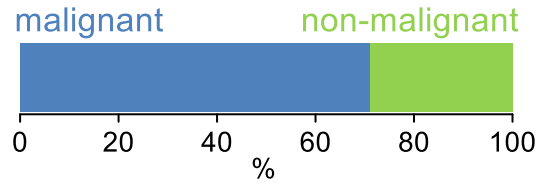
Pain PCPSS	894	1461	61.2%
Pain SAS	851	1537	55.4%
Fatigue	748	1512	49.5%
Breathing problems	422	825	51.2%
Family/carer	456	863	52.8%

## Casemix adjusted outcomes

Pain PCPSS	6563	0.07
Other symptoms	6507	0.24
Family/carer	6342	0.22
Psychological/spiritual	6556	0.17
Pain SAS	5755	0.32
Nausea	5743	0.20
Breathing problems	5741	0.36
Bowel problems	5744	0.31

✓ = Positive outcomes    N = Total outcomes

## Diagnosis

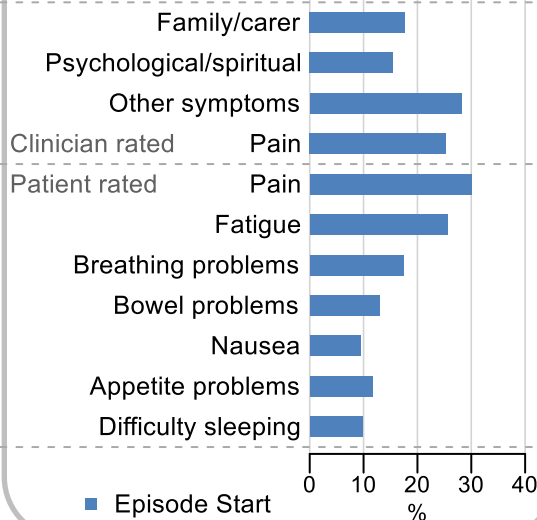


## Age at episode start

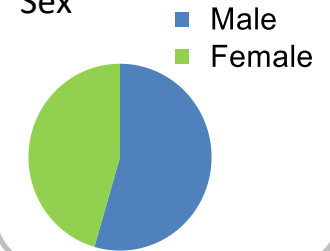
Mean: **72.5**  
Median: **74.0**

## Symptoms & problems

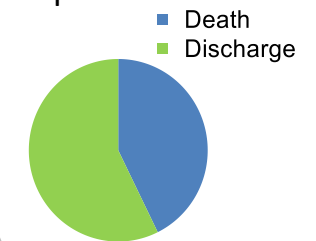
proportion of moderate / severe scores



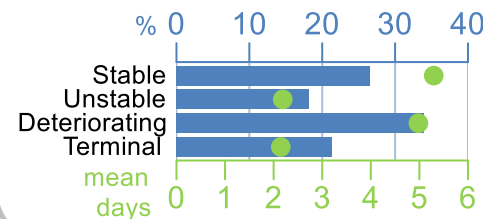
## Sex



## Episode end



## Phase % and mean length in days

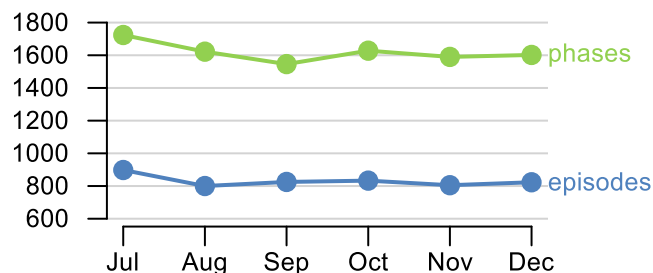


## Phases per episode

**1.9**

## Volume of data

Patients: **3,824**  
Episodes: **5,054**  
Phases: **9,713**



## Episode length in days

Mean: **7.5**  
Median: **4.0**

