

## Patient outcomes

	✓	N	Result
Date ready for care to episode start			
Day of/day after	3239	3276	98.9%
Time in unstable phase			
Three days or less	2138	2350	91.0%

## Symptoms & problems

### Anticipatory Care

Pain PCPSS	5876	6329	92.8%
Pain SAS	5147	5604	91.8%
Fatigue	5315	5713	93.0%
Breathing problems	6028	6315	95.5%
Family/carer	6291	6719	93.6%

### Responsive Care

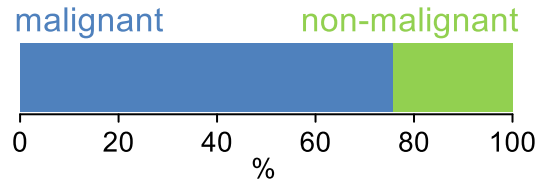
Pain PCPSS	822	1312	62.7%
Pain SAS	952	1594	59.7%
Fatigue	857	1487	57.6%
Breathing problems	481	884	54.4%
Family/carer	479	885	54.1%

## Casemix adjusted outcomes

Pain PCPSS	7641	0.12
Other symptoms	7647	0.24
Family/carer	7604	0.20
Psychological/spiritual	7647	0.22
Pain SAS	7198	0.42
Nausea	7197	0.23
Breathing problems	7199	0.32
Bowel problems	7201	0.38

✓ = Positive outcomes    N = Total outcomes

## Diagnosis

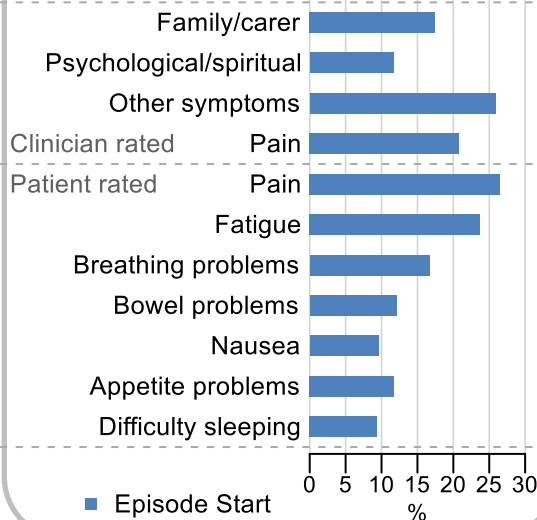


## Age at episode start

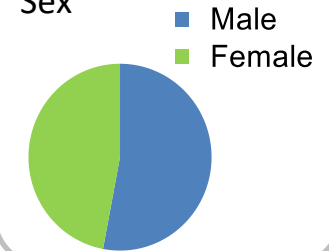
Mean: **74.5**  
Median: **76.0**

## Symptoms & problems

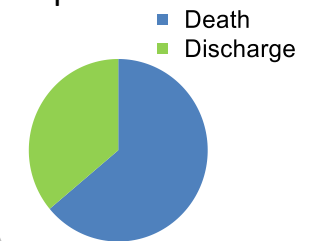
proportion of moderate / severe scores



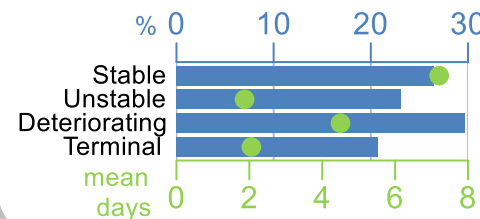
## Sex



## Episode end



## Phase % and mean length in days

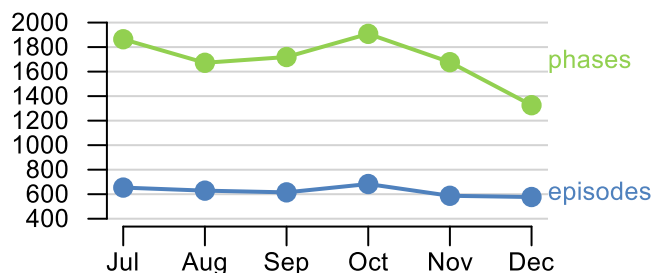


## Phases per episode

**2.7**

## Volume of data

Patients: **3,329**  
Episodes: **3,789**  
Phases: **10,166**



## Episode length in days

Mean: **11.3**  
Median: **7.0**

