

Patient outcomes

	✓	N	Result
Date ready for care to episode start			
Day of/day after	16354	16595	98.5%
Time in unstable phase			
Three days or less	5986	6588	90.9%

Symptoms & problems

Anticipatory Care

Pain PCPSS	19772	21467	92.1%
Pain SAS	16790	18523	90.6%
Fatigue	17256	18719	92.2%
Breathing problems	20017	21023	95.2%
Family/carer	21054	22407	94.0%

Responsive Care

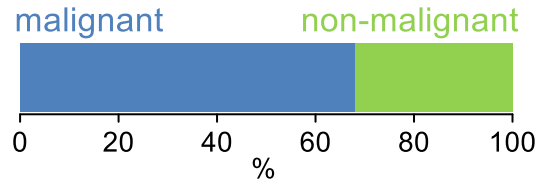
Pain PCPSS	3293	5193	63.4%
Pain SAS	3403	5688	59.8%
Fatigue	3080	5480	56.2%
Breathing problems	1747	3177	55.0%
Family/carer	1656	2913	56.8%

Casemix adjusted outcomes

Pain PCPSS	26660	0.09
Other symptoms	26145	0.23
Family/carer	25320	0.22
Psychological/spiritual	26623	0.20
Pain SAS	24211	0.32
Nausea	24211	0.20
Breathing problems	24200	0.30
Bowel problems	24193	0.32

✓ = Positive outcomes N = Total outcomes

Diagnosis

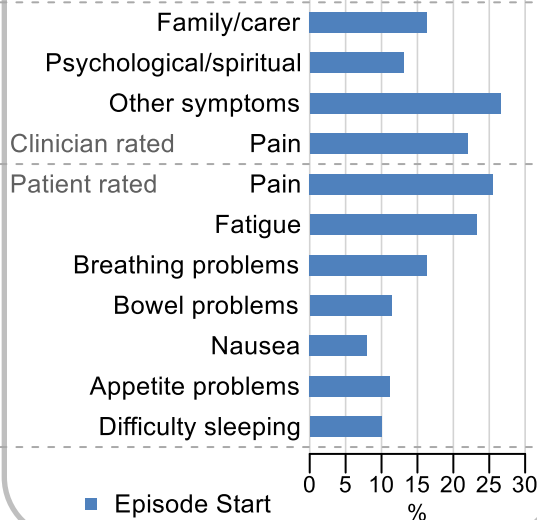


Age at episode start

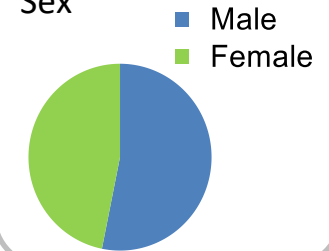
Mean: **74.2**
Median: **76.0**

Symptoms & problems

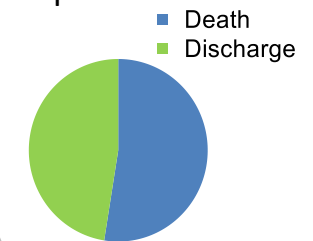
proportion of moderate / severe scores



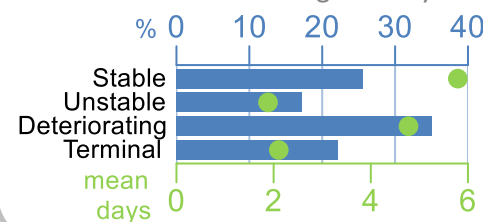
Sex



Episode end



Phase % and mean length in days



Phases per episode

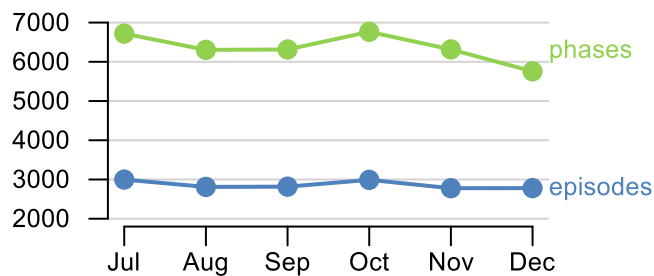
2.2

Volume of data

Patients: **14,265**

Episodes: **17,415**

Phases: **38,177**



Episode length in days

Mean: **8.7**
Median: **5.0**

