

Patient outcomes

Date ready for care to episode start

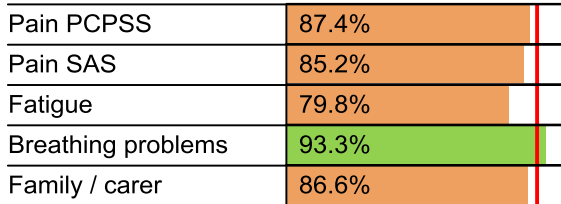


Time in unstable phase

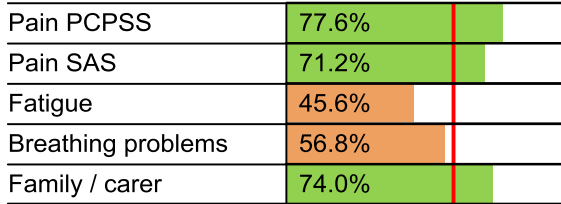


Symptoms & problems

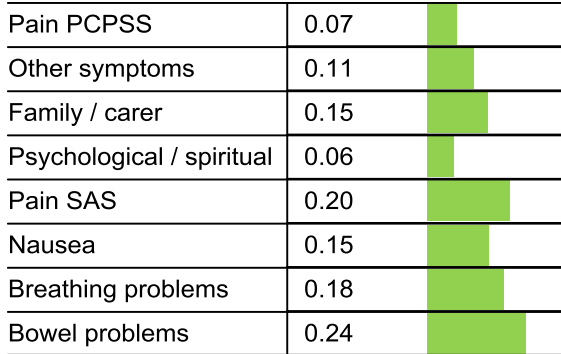
Anticipatory Care



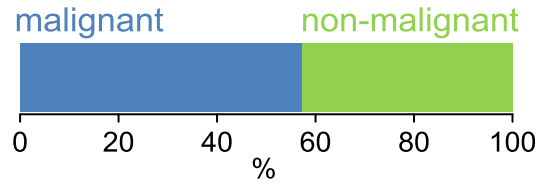
Responsive Care



Casemix adjusted outcomes



Diagnosis

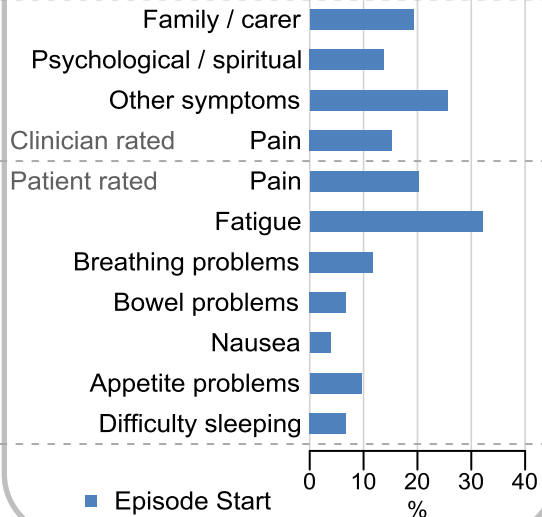


Age at episode start

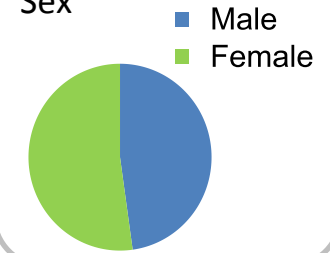
Mean: **76.1**
Median: **78.0**

Symptoms & problems

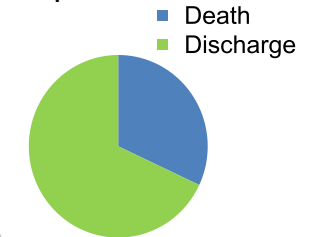
proportion of moderate / severe scores



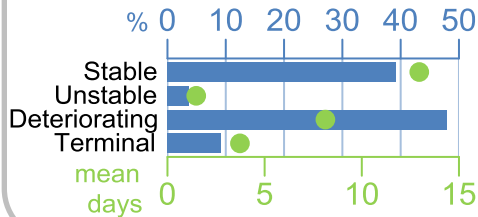
Sex



Episode end



Phase % and mean length in days

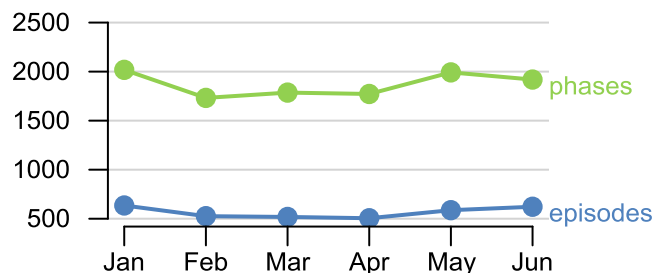


Phases per episode

2.6

Volume of data

Patients: **2,966**
Episodes: **3,784**
Phases: **11,219**



Episode length in days

Mean: **28.6**
Median: **17.0**

