

Patient outcomes

Date ready for care to episode start

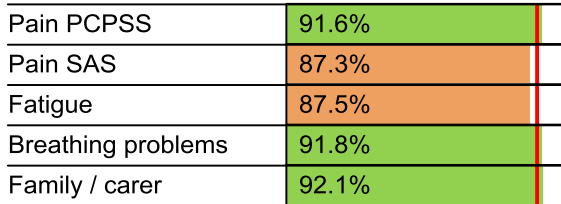


Time in unstable phase

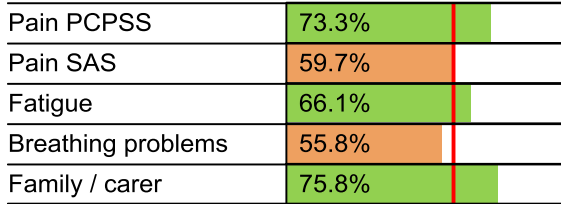


Symptoms & problems

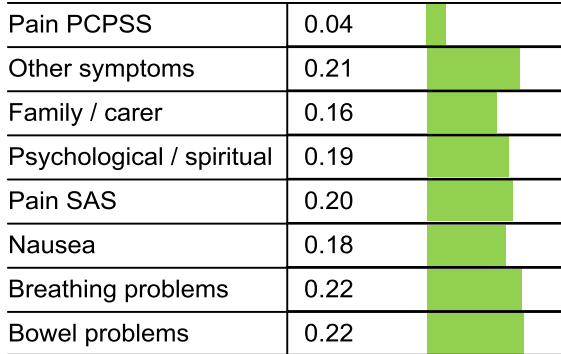
Anticipatory Care



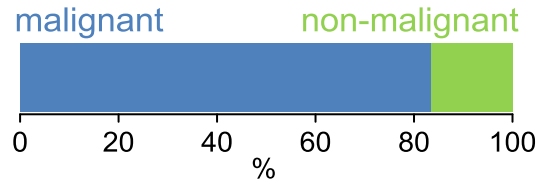
Responsive Care



Casemix adjusted outcomes



Diagnosis

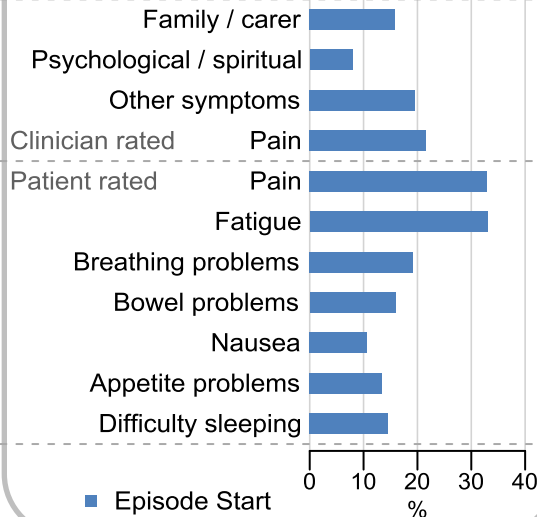


Age at episode start

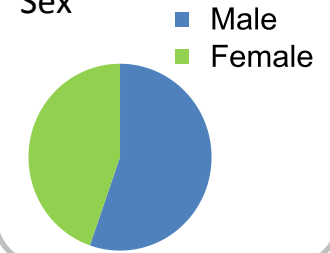
Mean: **72.6**
Median: **74.0**

Symptoms & problems

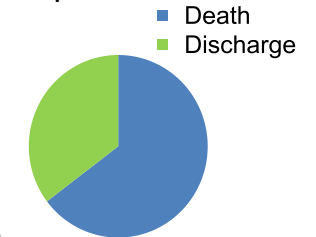
proportion of moderate / severe scores



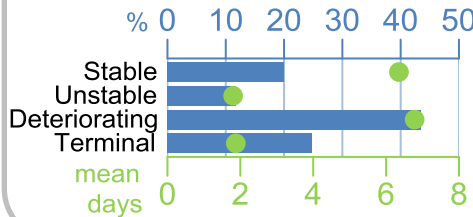
Sex



Episode end



Phase % and mean length in days

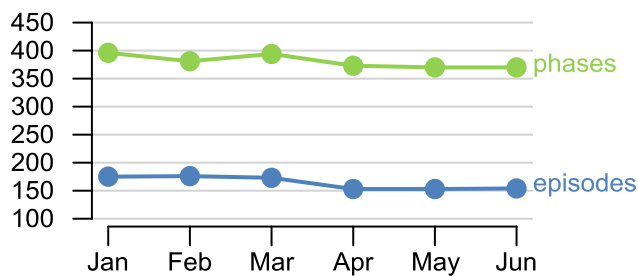


Phases per episode

2.3

Volume of data

Patients: **889**
Episodes: **1,020**
Phases: **2,284**



Episode length in days

Mean: **11.0**
Median: **6.0**

